



ARMAND GUILLAUMIN (1841-1927)

Roquebrune, Le Matin

(Roquebrune, Morning)

Signed lower left, "Guillaumin"

oil on canvas

25 x 31 1/4 in. (34 x 40 5/8 x 2 1/2 in.)

63.5 x 79.38 cm (86.36 x 103.19 x 6.35 cm)

1924

44622

PROVENANCE:

Sotheby's: London June 27, 1984, Impressionist and Modern Paintings and Sculpture Part II, lot 126
Private Collection, California

Jean Baptiste Armand Guillaumin (1841-1927) was a French Impressionist. Working en plein air, Guillaumin used loose brushstrokes and vibrant color to render French landscapes and waterscapes, modern life and industrialism, and the Parisian working-class in pastels and oils. His intense use of color recalls Fauvism and he was the leader of the École de Crozant, a group of painters who depicted the Creuse landscape in central France. His friendships with Paul Cézanne, Camille Pissarro, and Vincent Van Gogh were formative and influential for them all, although Guillaumin never received the same acclaim in his lifetime.

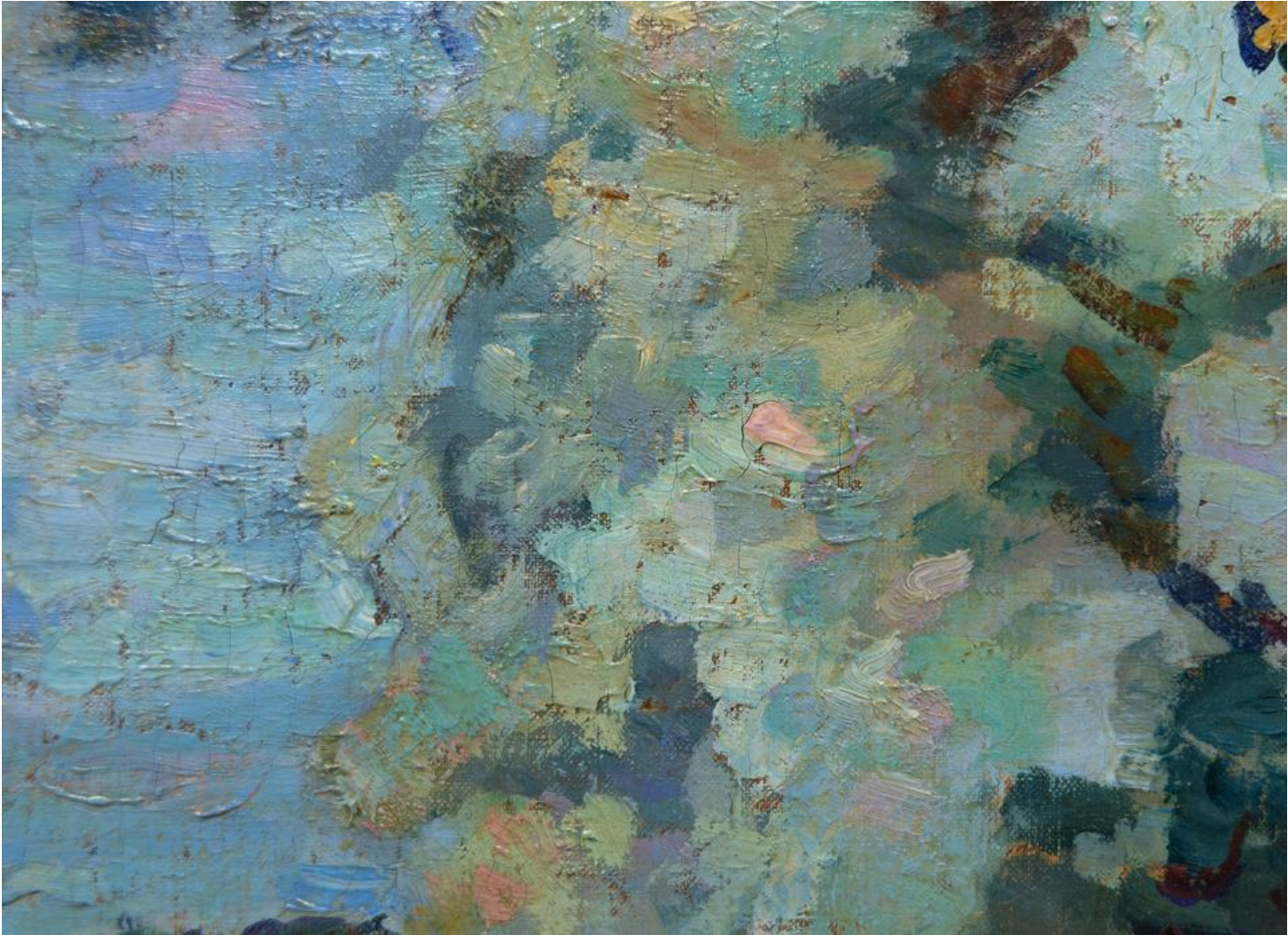
In 2008 the Galerie Pierre Levy in Paris held an exhibition spanning the first half of Guillaumin's career. His paintings are found in the Musée d'Orsay, Paris; Metropolitan Museum of Art, NY; Art Institute of Chicago; Museum of Modern Art André Marlaux; Musée de Petit-Palais, Geneva; National Gallery of Art; Ohara Museum of Art; Museum of Fine Arts, Houston, TX; and the Pushkin Museum, Moscow.

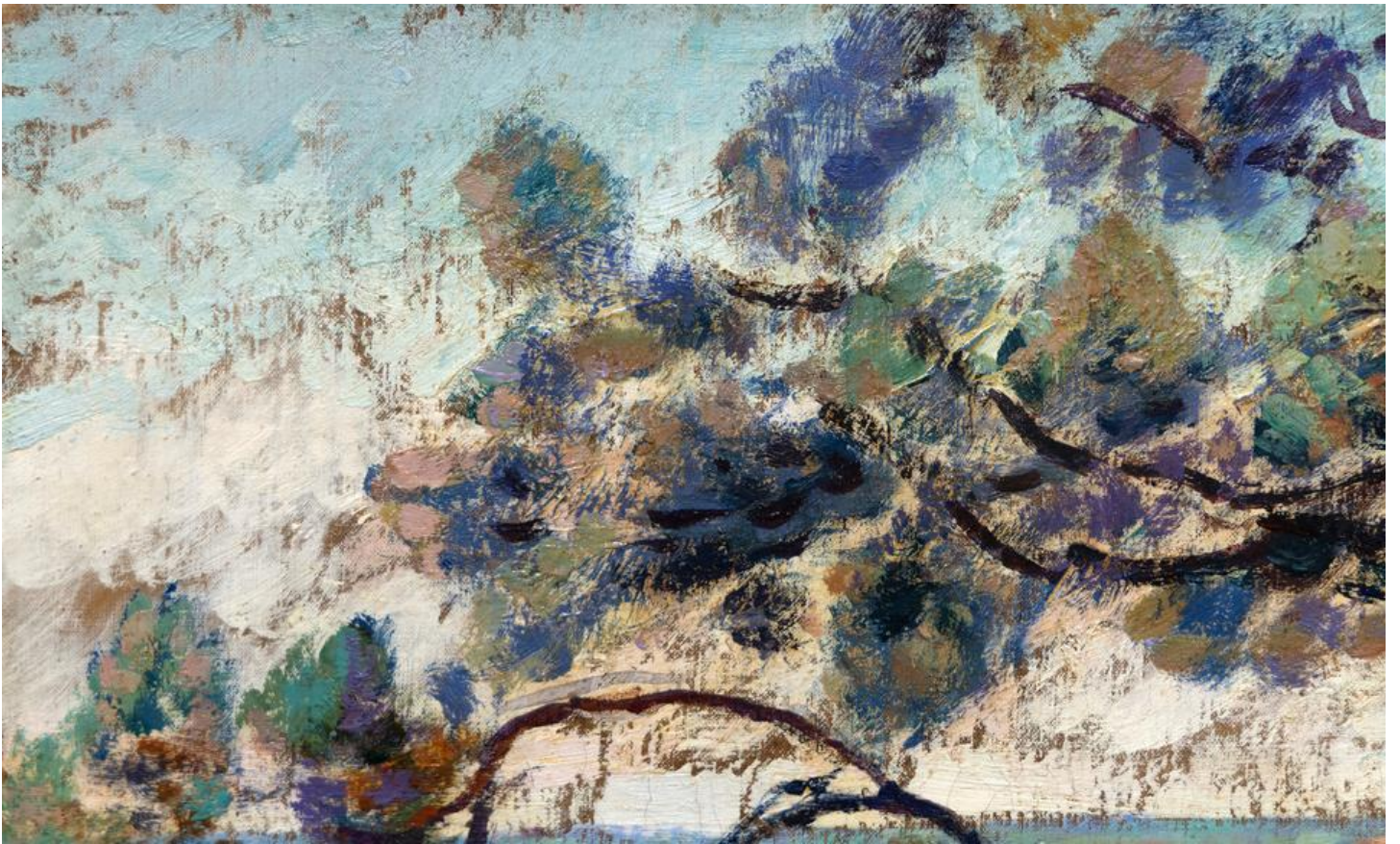
The information and material herein represents Gallery's best efforts and understanding of the current history and scholarship with respect to the provenance of the Work(s) of Art described and is not part of any warranty.



















LOT 126 27-6-84

1256977

251

Small white label with illegible text