



ROBERT NATKIN (1930-2010)

Bern Series (#421)

Signed lower middle, "Natkin"

acrylic on canvas

34 x 46 in. (34 7/8 x 47 in.)

1983

10792

PROVENANCE:

General Electric Corporate Art Collection

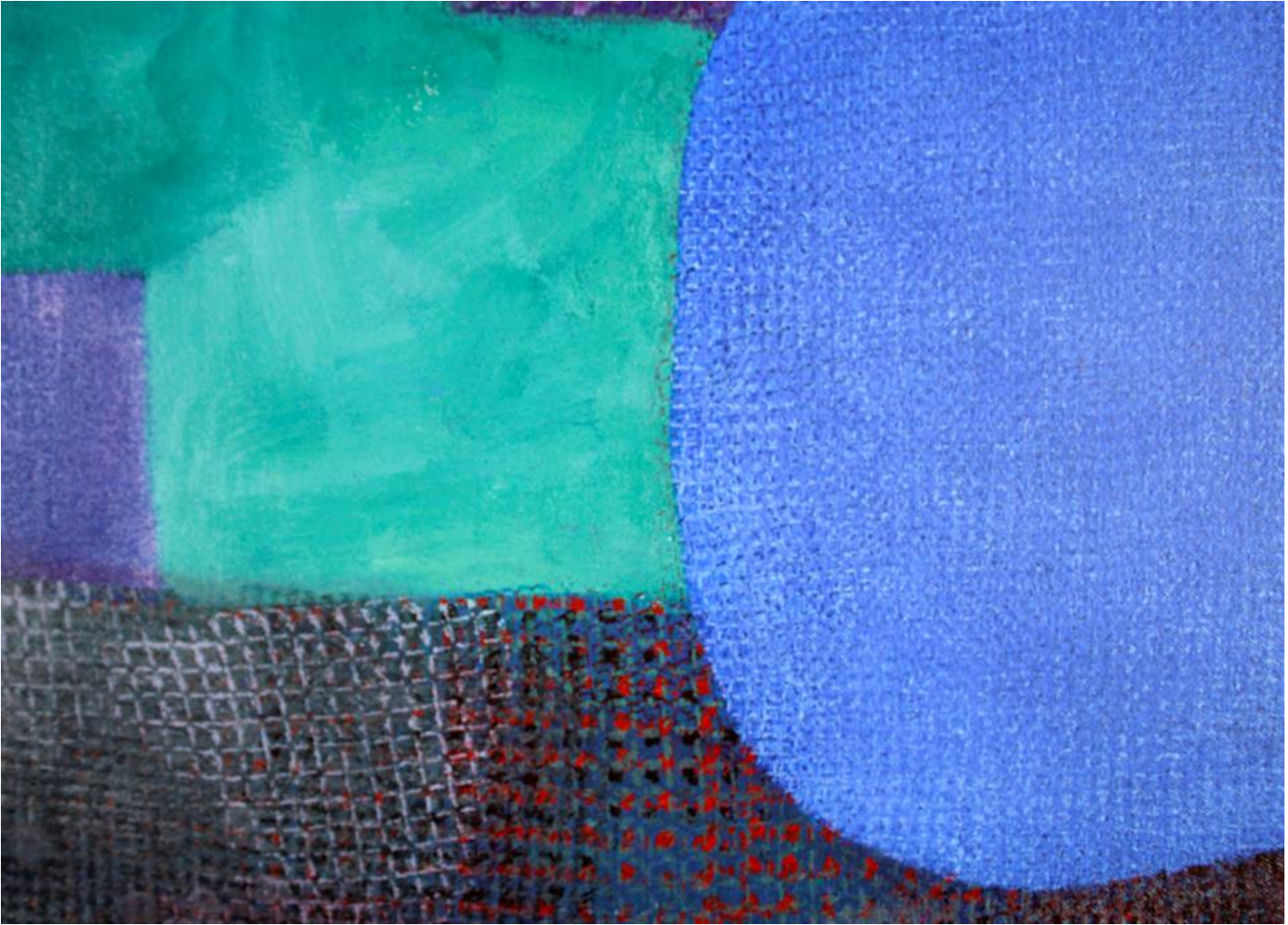
Heather James Fine Art, Palm Desert

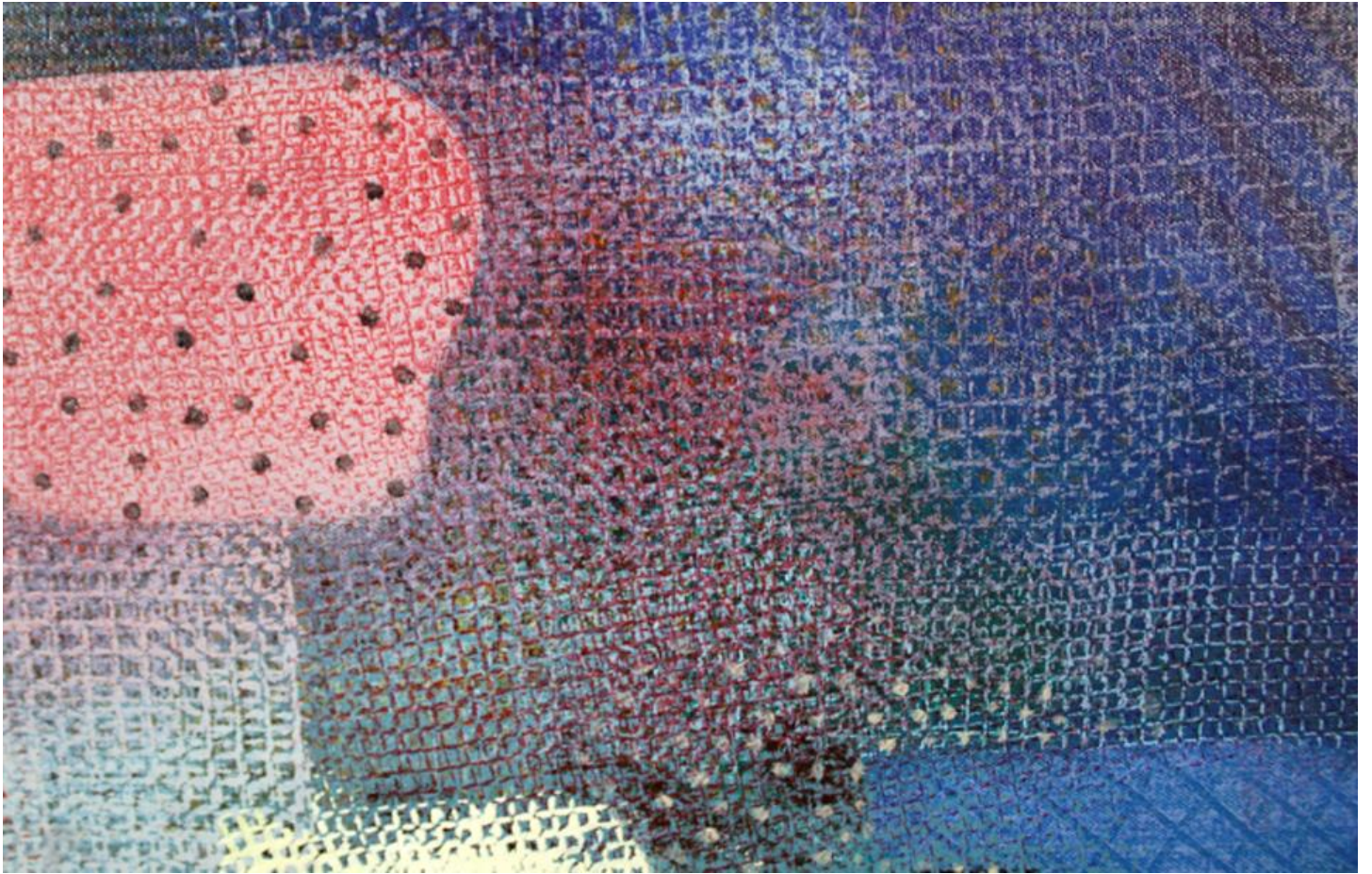
Robert Natkin (1930-2010) was born in Chicago and graduated from the Art Institute of Chicago in 1952. Natkin's art blends Abstract Expressionism with Post-Impressionist colors. His work often runs in series he created using columns, grids and shifting planes that include this early jazz oriented example titled Coltrane. These works, with vertical stripes alternating between thick and thin, decorative and textured, are cheerful and light, invoking a specific lyricism. His painting is inspired by the color used by Henri Matisse and Pierre Bonnard, and the Cubism of Paul Klee. In 1959, Natkin joined a group of other artists from Chicago in an exodus to New York, where he began teaching and exhibiting his paintings.

The information and material herein represents Gallery's best efforts and understanding of the current history and scholarship with respect to the provenance of the Work(s) of Art described and is not part of any warranty.



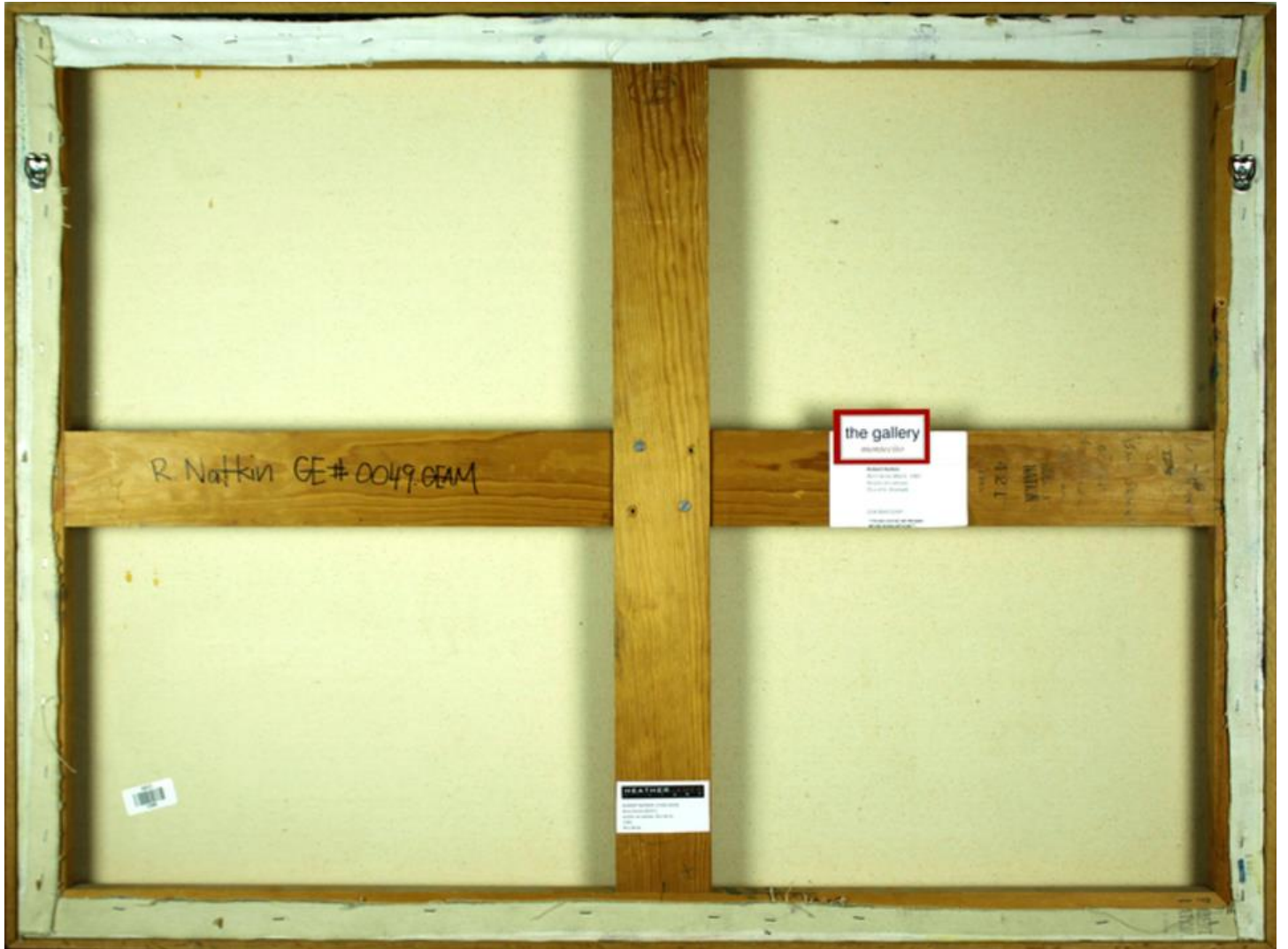












R Natkin GE# 0049.06AM

the gallery
ARTWORKS
12 L
MIA

[Barcode]

ARTWORKS
12 L
MIA