



HENRY MOORE (1898-1986)

Two Reclining Figures

Signed in pencil, lower right, "Moore"

charcoal, green chalk, brown conte, watercolor wash, and gouache on paper

8 3/4 x 11 1/2 in. (16 1/2 x 13 1/2 in.)

1981

12099

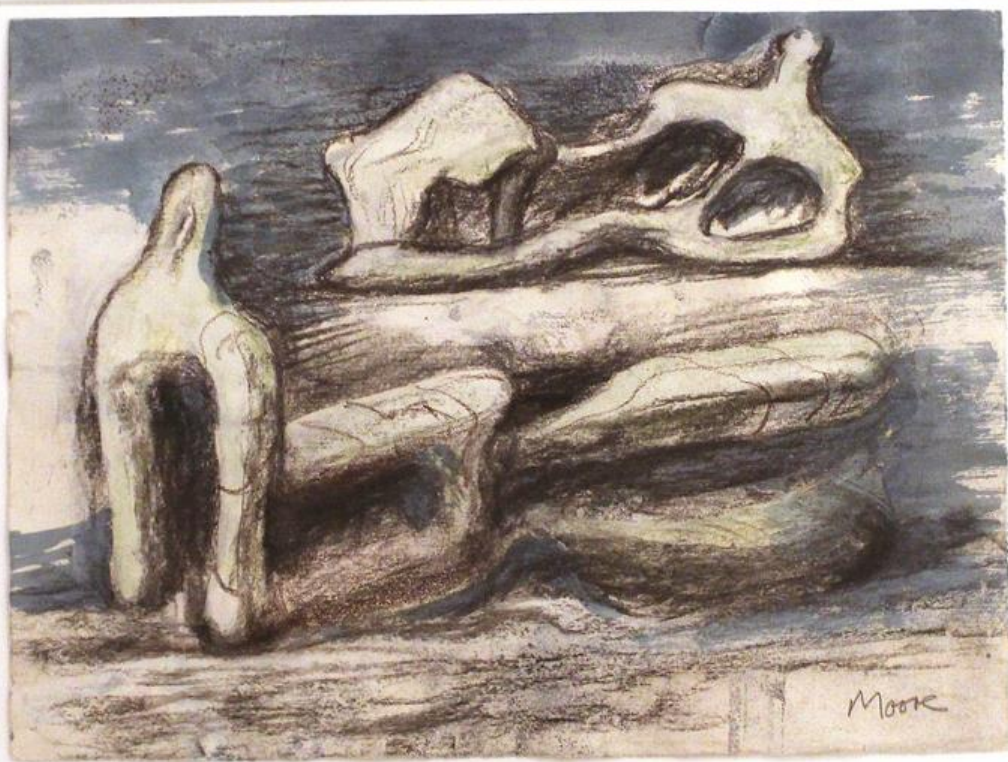
PROVENANCE:

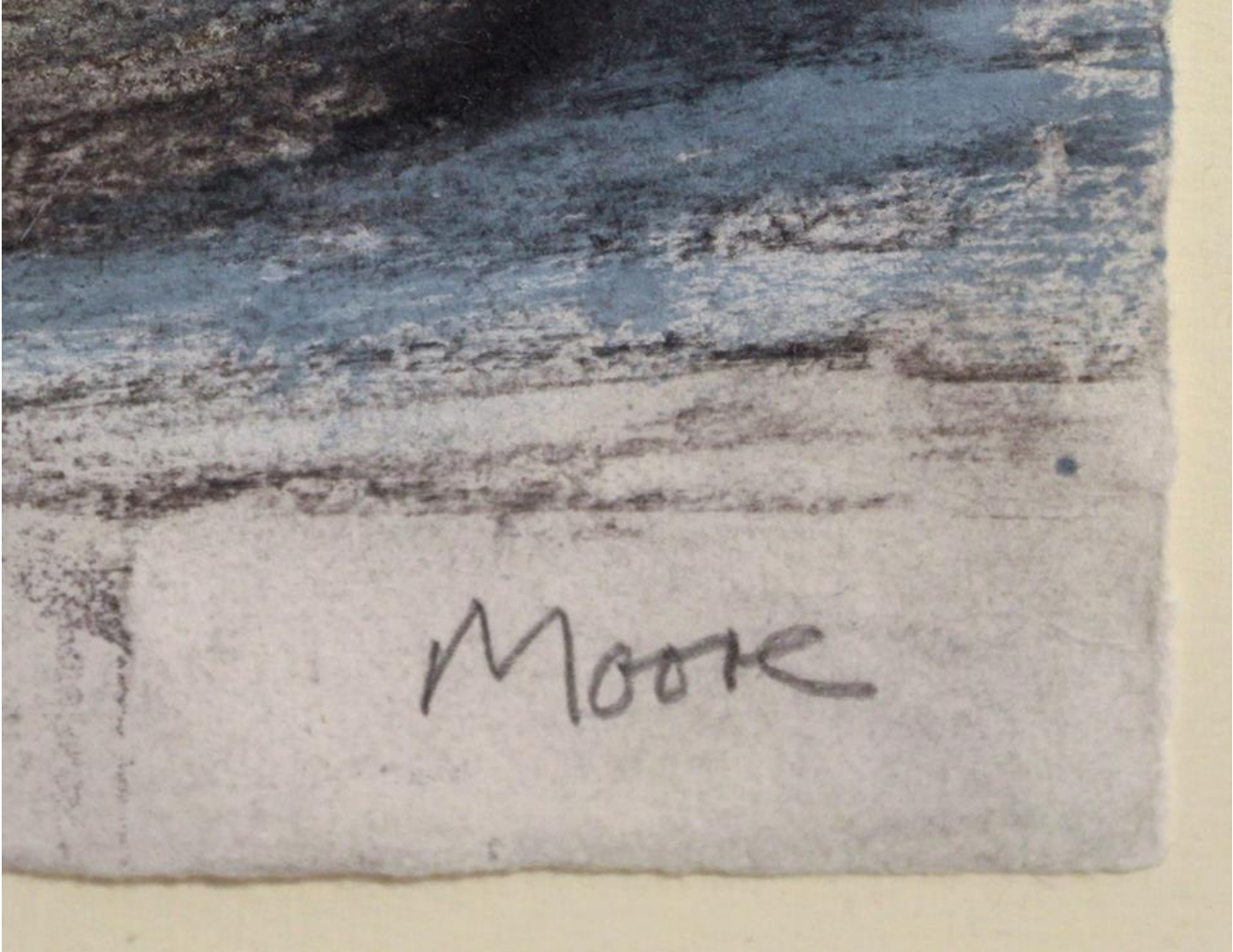
John Cavaliero Fine Art

Private Collection, New York

Henry Moore (1898-1986) was an English sculptor and artist. He was best known for his semi-abstract monumental bronze sculptures which are located around the world as public works of art. His forms are usually abstractions of the human figure, typically depicting mother-and-child or reclining figures. Moore's works are usually suggestive of the female body, apart from a phase in the 1950s when he sculpted family groups. His forms are generally pierced or contain hollow spaces. Many interpreters liken the undulating form of his reclining figures to the landscape and hills of his birthplace, Yorkshire.

The information and material herein represents Gallery's best efforts and understanding of the current history and scholarship with respect to the provenance of the Work(s) of Art described and is not part of any warranty.











The image shows the back of a framed artwork. A black frame surrounds a light brown cardboard backing. A thin black wire is stretched across the top of the backing, held in place by two black clips. A small white label is affixed to the cardboard. The label contains the following text:

Two Reclining Figures, 1981
Gouache, watercolor, charcoal, chalk,
and cork on paper
8 1/2 x 11 1/4 inches (21.5 x 28.6 cm)



81(364)

Two reclining figures 1962
Charcoal, green chalk, brown conte,
watercolour wash, gouache
222 x 290mm (8 3/4 x 11 7/16in)
HMF archive no. 81(364)

This is a photograph of a drawing done
by me in 1981

Henry Moore

Henry Moore
November 1962

CAVALIERO FINE ARTS
257 EAST 42nd ST.
NEW YORK, N.Y. 10017
TEL. 212 697 1094