



**N.C. WYETH (1882-1945)**

**Bringing in the Ears (Composition drawing)**

Signed lower right, "SKETCH by N. C. WYETH"  
charcoal on paper

26 1/2 x 32 in. (35 x 40 1/2 x 1 1/2 in.)

1942

12524

**PROVENANCE:**

Minnesota Valley Canning Company, Le Sueur, Minnesota, 1942, commissioned from the artist

Private Collection

Private Collection, circa 1970, gift from the above

Private Collection, circa 1970, gift from the above

Private Collection, Pennsylvania, by descent

**LITERATURE:**

This drawing is included as no. NCW 1375 in the Brandywine River Museum of Art's online catalogue raisonné of the artist's work

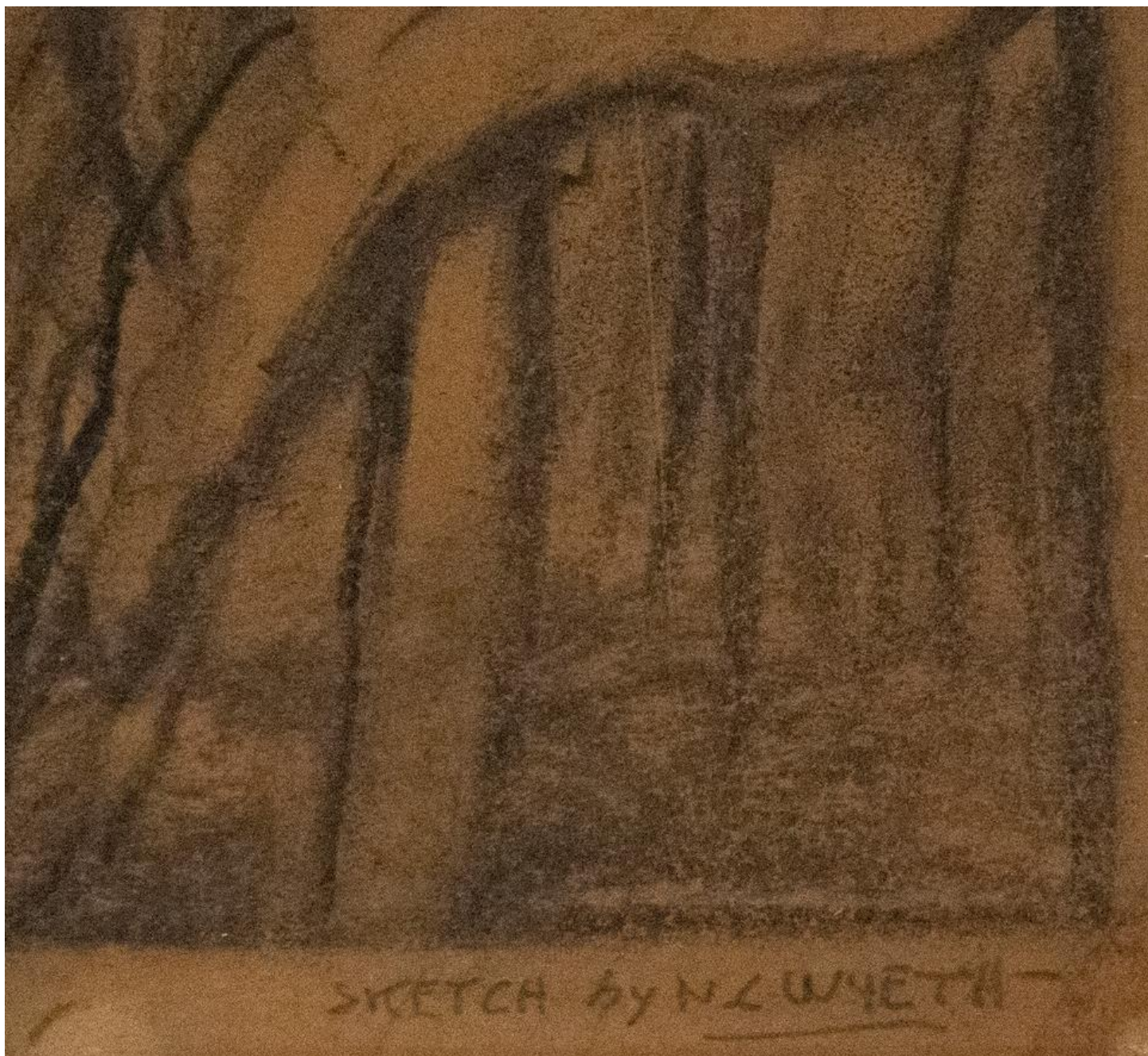
Among the most noteworthy illustrators this country has ever produced, Wyeth is also the patriarch of one of America's most esteemed artistic dynasties. His son Andrew and grandson Jamie rank among the most respected artists of their generations, heavily influenced by other artists in the extended Wyeth family. N.C. Wyeth, in addition to illustrating more than 100 books-including adventure classics like *Treasure Island*, *Kidnapped*, *Robinson Crusoe*, and *The Last of the Mohicans*-was also a highly regarded muralist, receiving numerous commissions for prestigious corporate and government buildings throughout the United States.

Wyeth's style, honed by early work at the *Saturday Evening Post* and *Scribner's*, demonstrates his keen awareness of the revealing gesture, allowing readers to instantly grasp the essence of a scene. He possessed a rare ability to depict subjects and events from a child's point of view, and is particularly known for dramatizing characters by the use of long shadow, a technique that is said to have influenced the epic moviemaking style of the 1940s. In addition to providing supplementary drama and excitement to the written word, Wyeth's works have become classics in and of themselves.

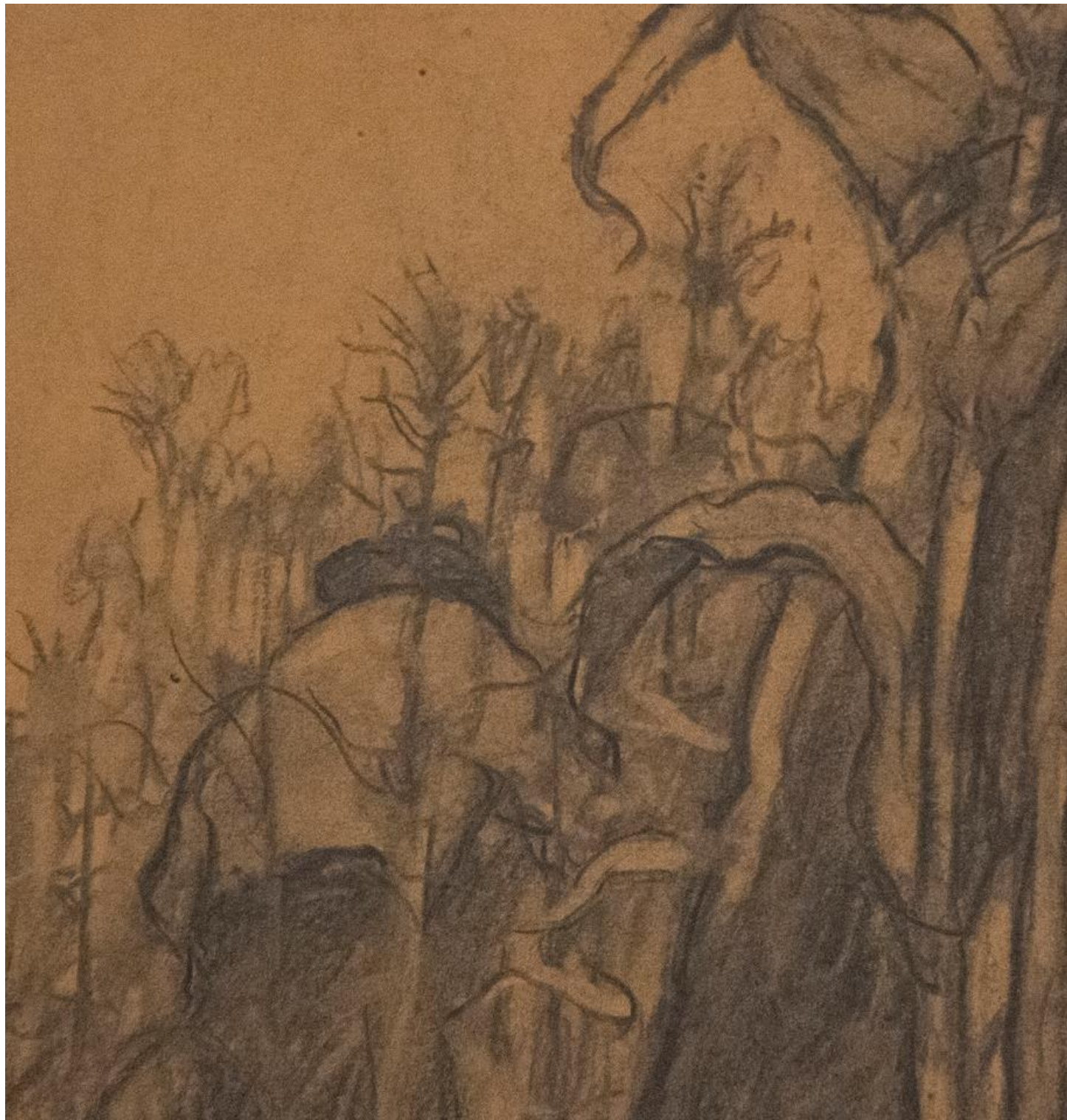
The information and material herein represents Gallery's best efforts and understanding of the current history and scholarship with respect to the provenance of the Work(s) of Art described and is not part of any warranty.





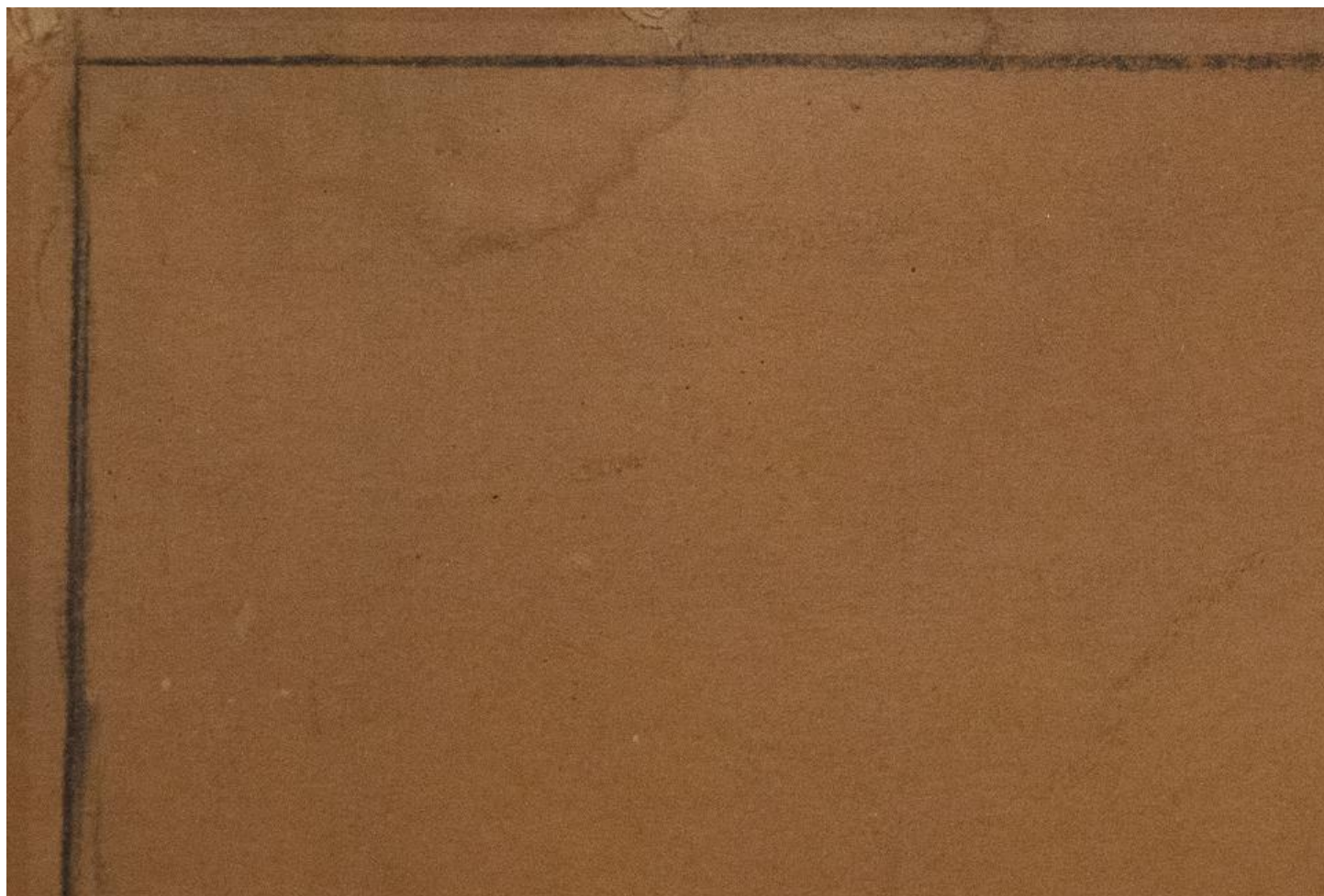


















part 1  
N10074  
MC Weyth, Study for Ad for Massimo Cui

part 1  
N10074  
MC Weyth, Study for Ad for Massimo Cui

PERMANENT FRAMES  
100 South Street  
Philadelphia, Pa. 19106

part 1  
N10074  
MC Weyth, Study for Ad for Massimo Cui



# HARVEST HOME *in the Land of the Green Giant*



*"Bringing in the Ears"—painted by N. C. WYETH*

Forest of stalks on parade in Hiawatha-land . . . There is something marvelous and mighty when a cornfield has come to its harvest time . . . The little seed of May is the majestic plant of August . . . Life's cycle of corn is complete . . . The green is gold . . . The gold is ready for man's taking . . . The new pack is coming in!

*NIBLETS Brand whole kernel corn*



*with the Green Giant on the label*

It takes a lot of things to make Niblets Brand whole kernel corn what it is. Special seed (D-138). Good "Indian Country" earth—and sun and rain. Care of good farmers—and the secret of picking it at just the right time for tenderness and fresh corn taste. . . . Packed only by Minnesota Valley Canning Company, headquarters, Le Sueur, Minnesota, and Fine Foods of Canada, Ltd., Tecumseh, Ontario. Also packers of Green Giant Brand Peas.