



JIM DINE (b. 1935)

Night and Martha Broderick

Signed, titled, and dated verso, "Night and Martha Broderick, 2005, Jim Dine"

oil and charcoal on linen canvas

108 x 108 in.

2005

13442

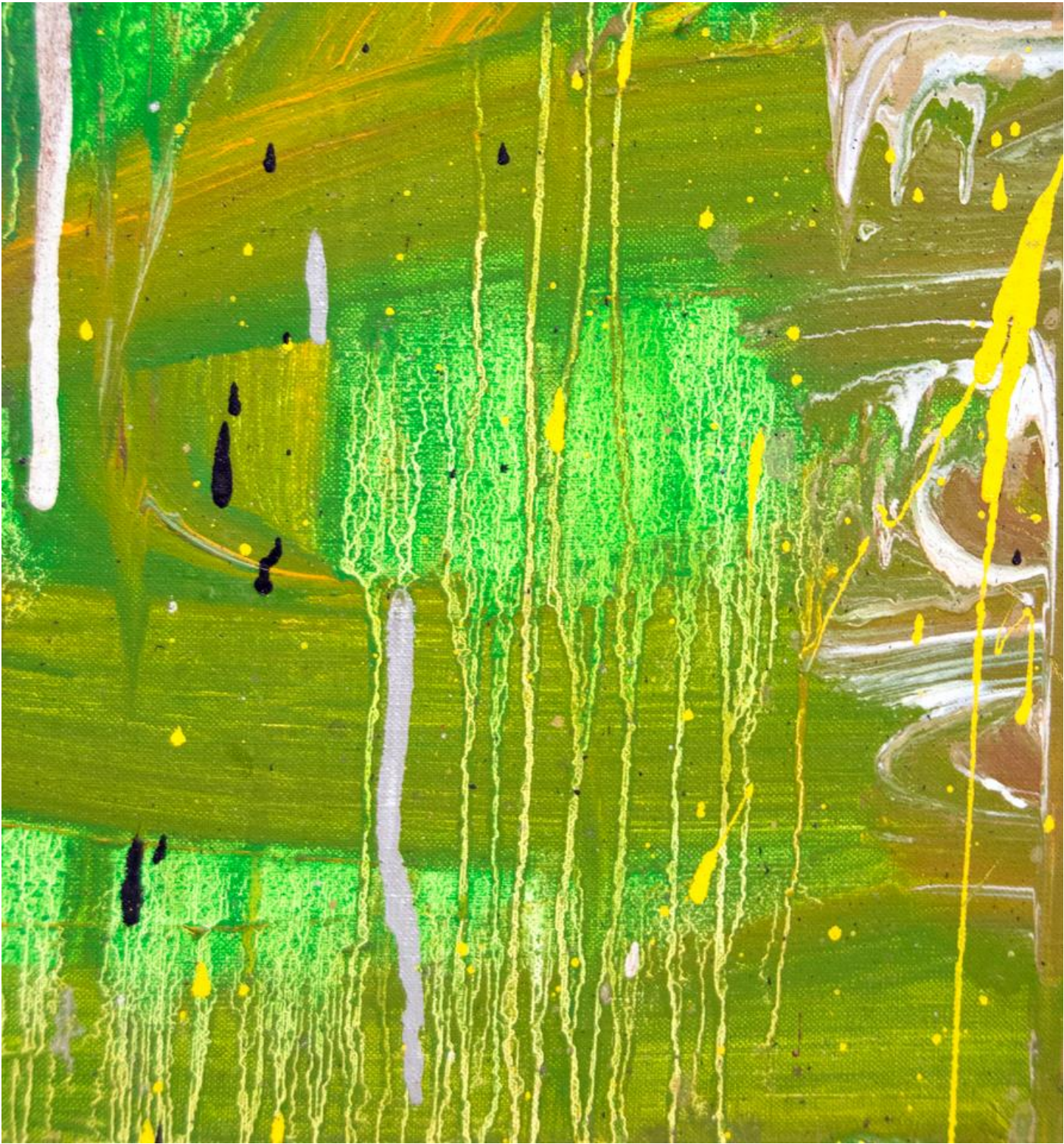
PROVENANCE:

Jonathan Novak Contemporary Art, Los Angeles

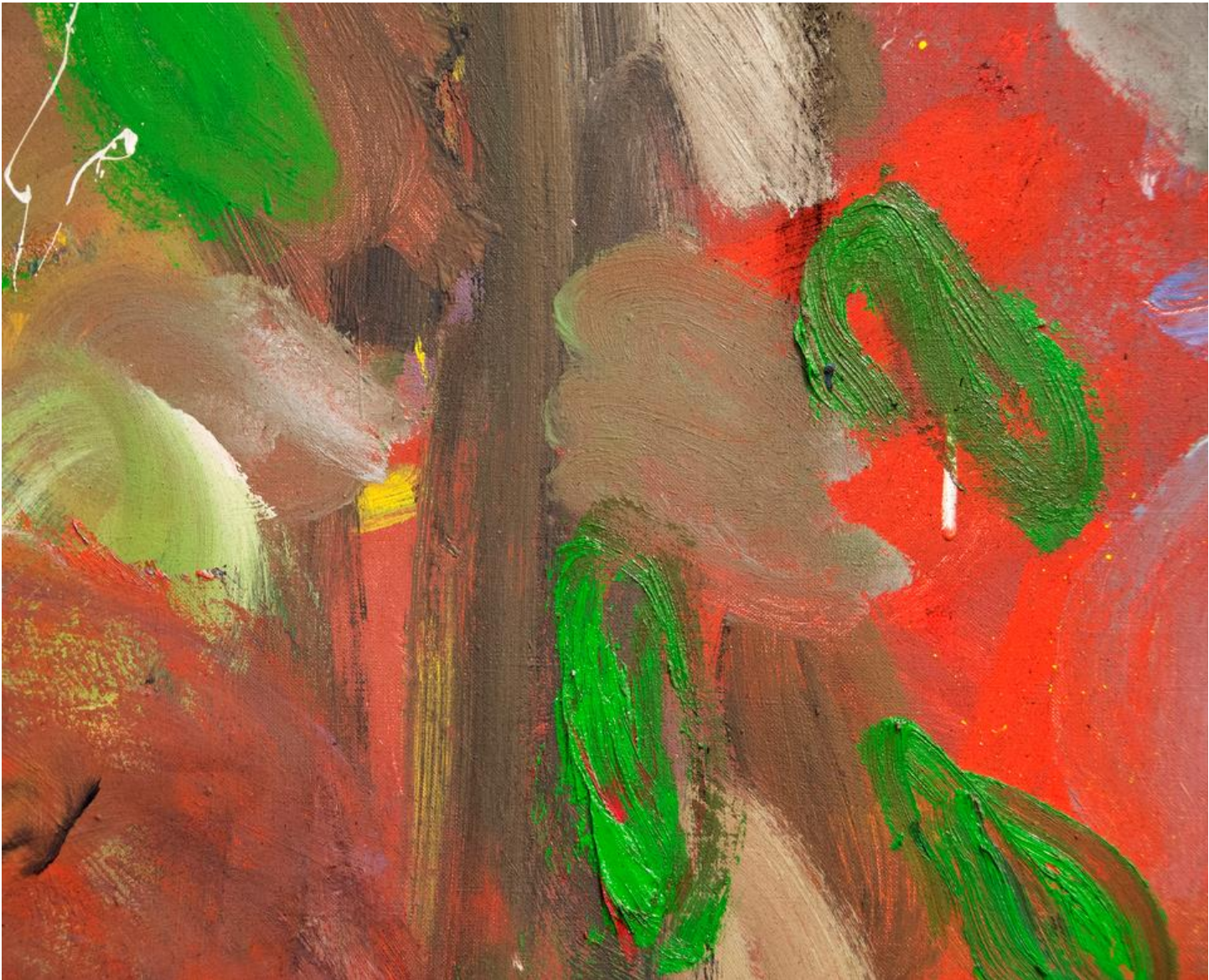
Private Collection, California

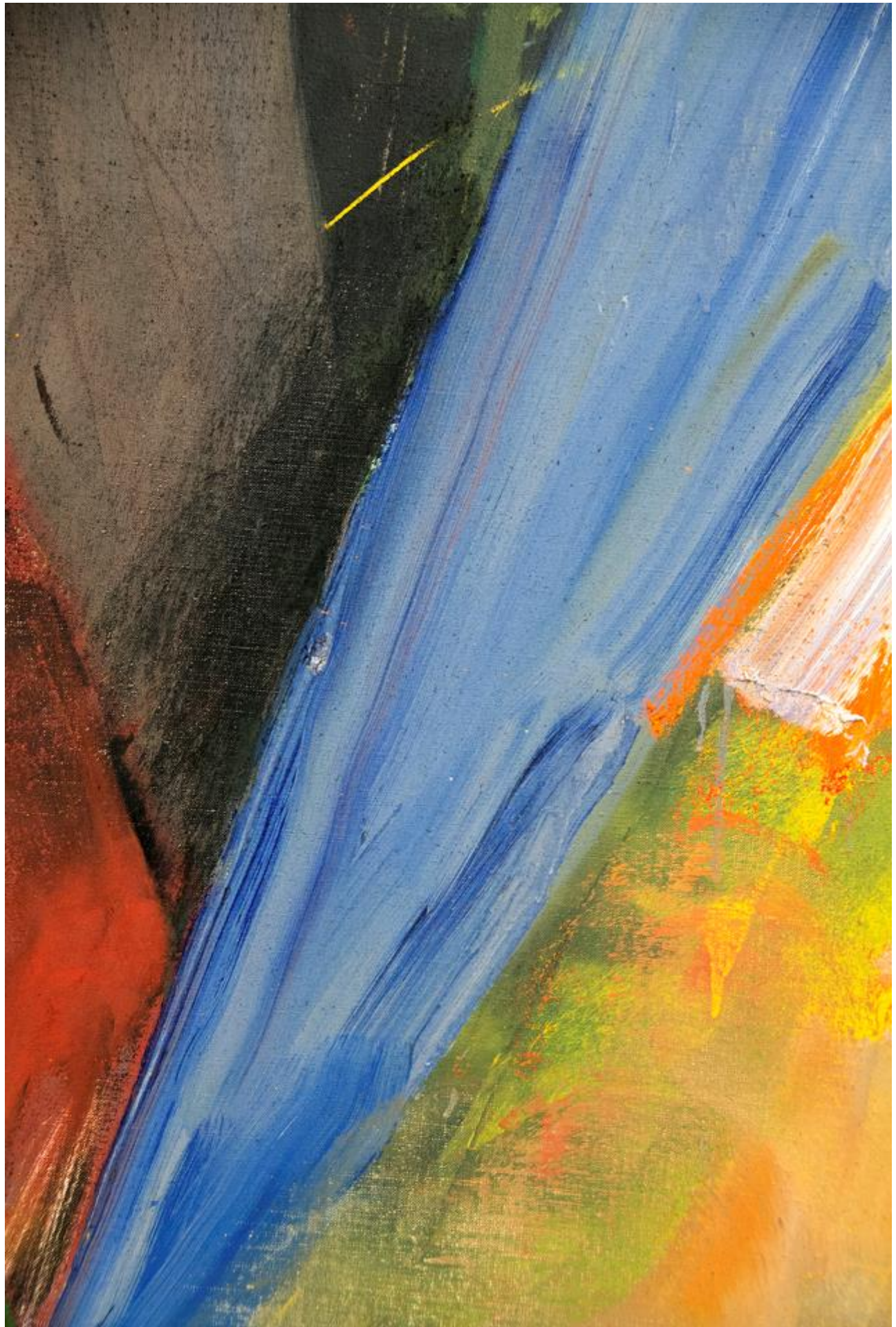
Born in Cincinnati, Ohio, in 1935, the Pop artist Jim Dine is known for incorporating images of familiar and personally significant objects in his art. His repeated use of the objects — such as robes, hands, tools, and hearts — is a signature of his art. Dine studied at the University of Cincinnati and the Boston Museum School, and earned a BFA in 1957 from Ohio University. He then moved to New York and befriended like thinkers such as Robert Rauschenberg, Claes Oldenburg, and Roy Lichtenstein. In 1962, Dine's work was included in the groundbreaking and influential exhibition *New Painting and Common Objects* at the Norton Simon Museum; the show also included Warhol, Lichtenstein, and Thiebaud. In 1967, he moved to London to focus on drawing and printmaking. He is considered among the most accomplished draftsmen of his generation, and is known for his series of self-portraits and portraits of his wife, Nancy. Dine turned to sculpture in the early 1980s, when he created works based on the ancient sculpture *Venus de Milo*.

The information and material herein represents Gallery's best efforts and understanding of the current history and scholarship with respect to the provenance of the Work(s) of Art described and is not part of any warranty.

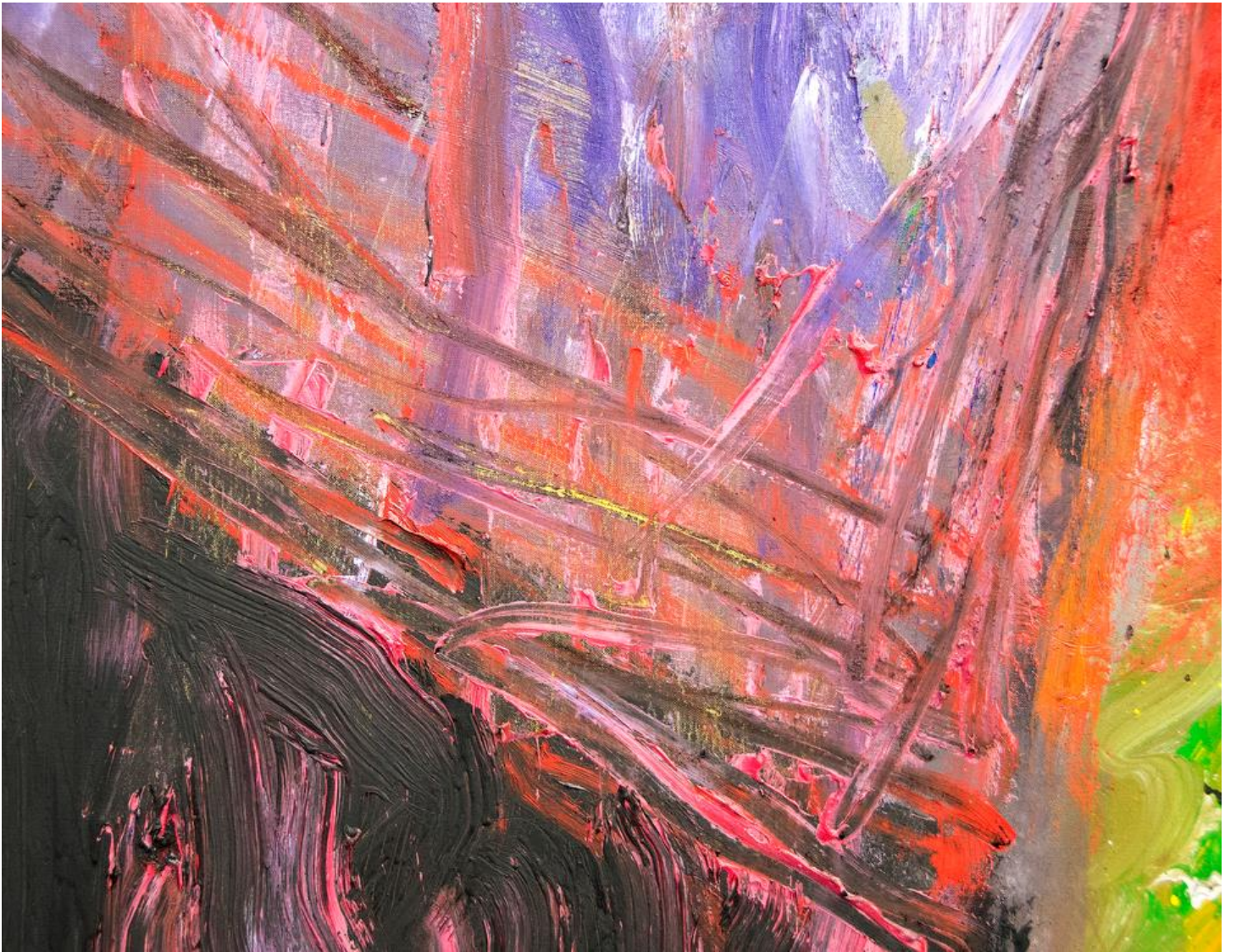




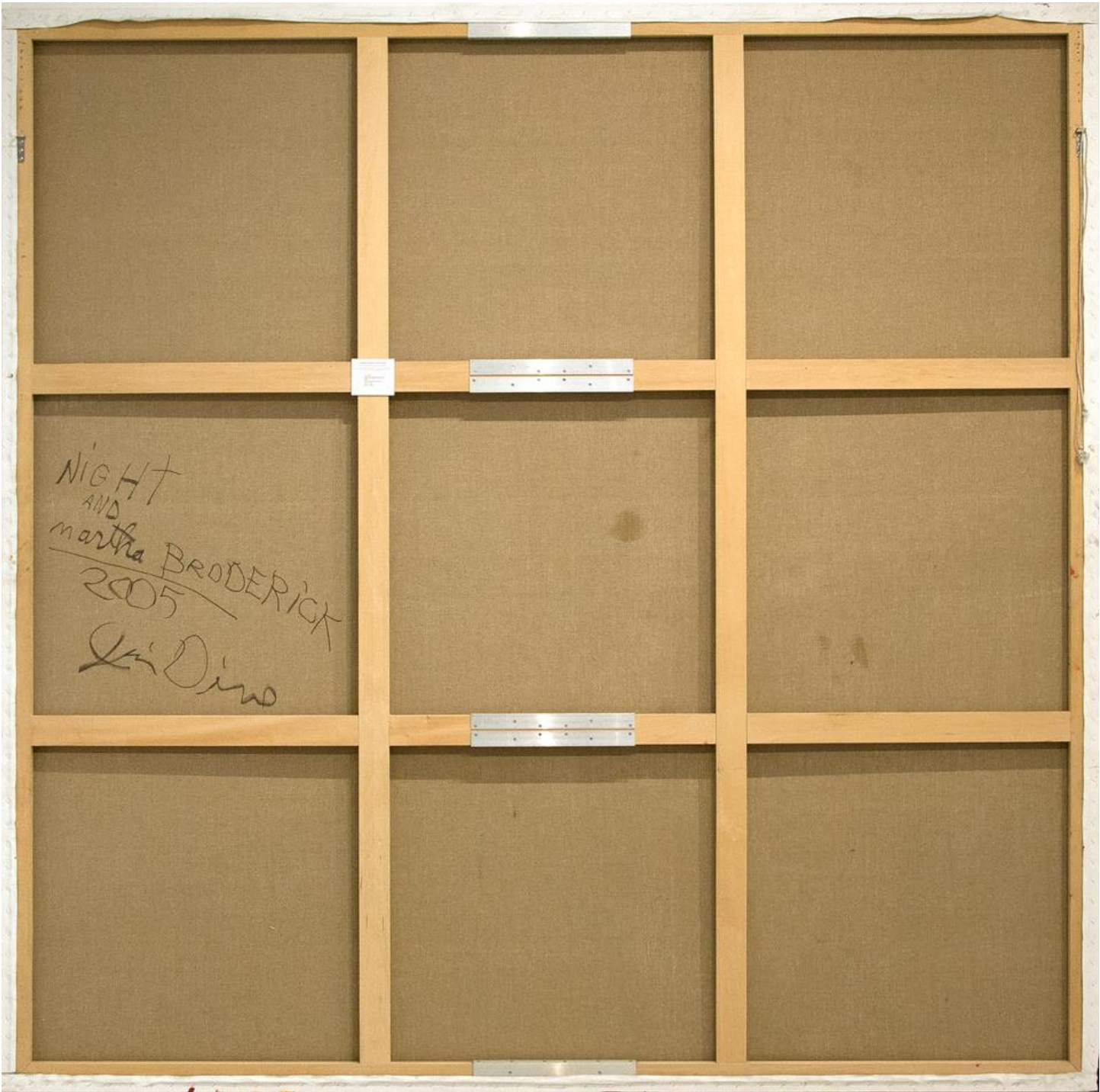












NIGHT
AND
martha BRODERICK
2005
Lui Dino

NIGHT
AND

martha BRODERICK

2005

Li' Dino