

TAUROMACHIE  
SURREALISTE



**SALVADOR DALI (1904-1989)**

**Tauromachie Surrealiste**

Signed in pencil, lower right, "Dali" and editioned lower left, "XLIX/C"  
complete portfolio of 7 etchings with Aquatint

12 1/2 x 16 1/4 in.

XLIX/C

1970

18503

**PROVENANCE:**

Private Collection, Ohio

Best known for *The Persistence of Memory*, his painting of clocks melting in a landscape, the prolific Spanish Surrealist artist was born in 1904 in Figueres, Spain. He studied at an academy in Madrid before moving to Paris in the 1920s. There, he interacted with Magritte, Miro, and Picasso, and began his Surrealist phase. He painted *The Persistence of Memory* in 1931. He moved to New York in 1940. Dali', like Pablo Picasso and Georges Braque, designed for theater productions as early as 1927. Later, the extent of his work went beyond creating stage décor and costumes to providing the libretto for *Bacchanale* (1939) and *Labyrinth* (1941). A lifetime of relentless controversy and self-promotion, as well as an extraordinary body of paintings and sculpture, assured Dali' of what he wanted — immortality, or at least enduring fame that transcends art.

The information and material herein represents Gallery's best efforts and understanding of the current history and scholarship with respect to the provenance of the Work(s) of Art described and is not part of any warranty.

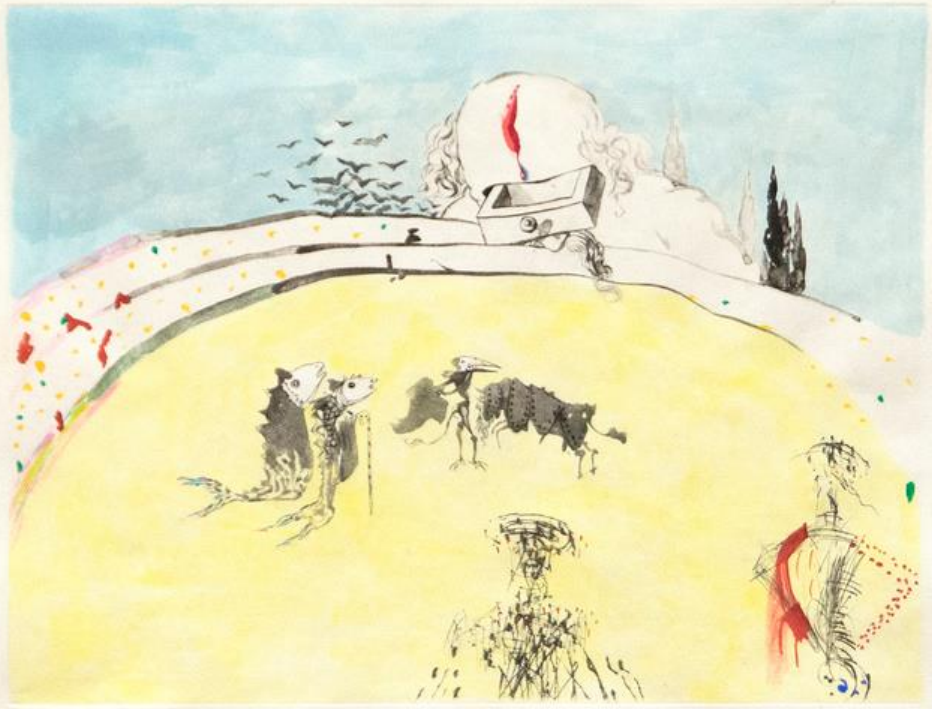


2018/10

A stylized, abstract signature or mark in the bottom right corner of the page. It consists of several overlapping, curved lines that form a complex, calligraphic shape. The lines are dark and appear to be drawn with a pen or fine marker.



XLIX/c



XLIX/6

*Salvador Dalí*



XL 2/6

*[Handwritten signature]*



22/76

Salvador Dalí



ALC/2

Pablo Picasso





1911/12

Xi