



HANS HOFMANN (1880-1966)**Yellow Vase**

Signed lower right, "HH IV 7(?) 42"

oil on panel

8 x 7 1/2 in. (13 1/8 x 12 5/8 x 1 3/4 in.)

1942

23521

PROVENANCE:

Private Collection, Brooklyn

LITERATURE:

Hans Hofmann catalogue raisonné of paintings, vol. 2, pg 222, fig. P370

Hans Hofmann is one of the most important figures of postwar American art. German born, he played a pivotal role in the development of Abstract Expressionism as an influential teacher of generations of artists in both Germany and America.

Born in Bavaria and educated in Munich, Hofmann studied science and mathematics before studying art. Moving to Paris in 1904, he studied at both the Academie de la Grande Chaumiere and the Academie Colarossi and was influenced by Picasso, Braque, Delaunay, Leger and Matisse, many of whom he met and became friendly. Hofmann moved back to Munich after WWI and opened an innovative art school, transmitting what he learned from the avant-garde in Paris and attracting students from Europe and the United States.

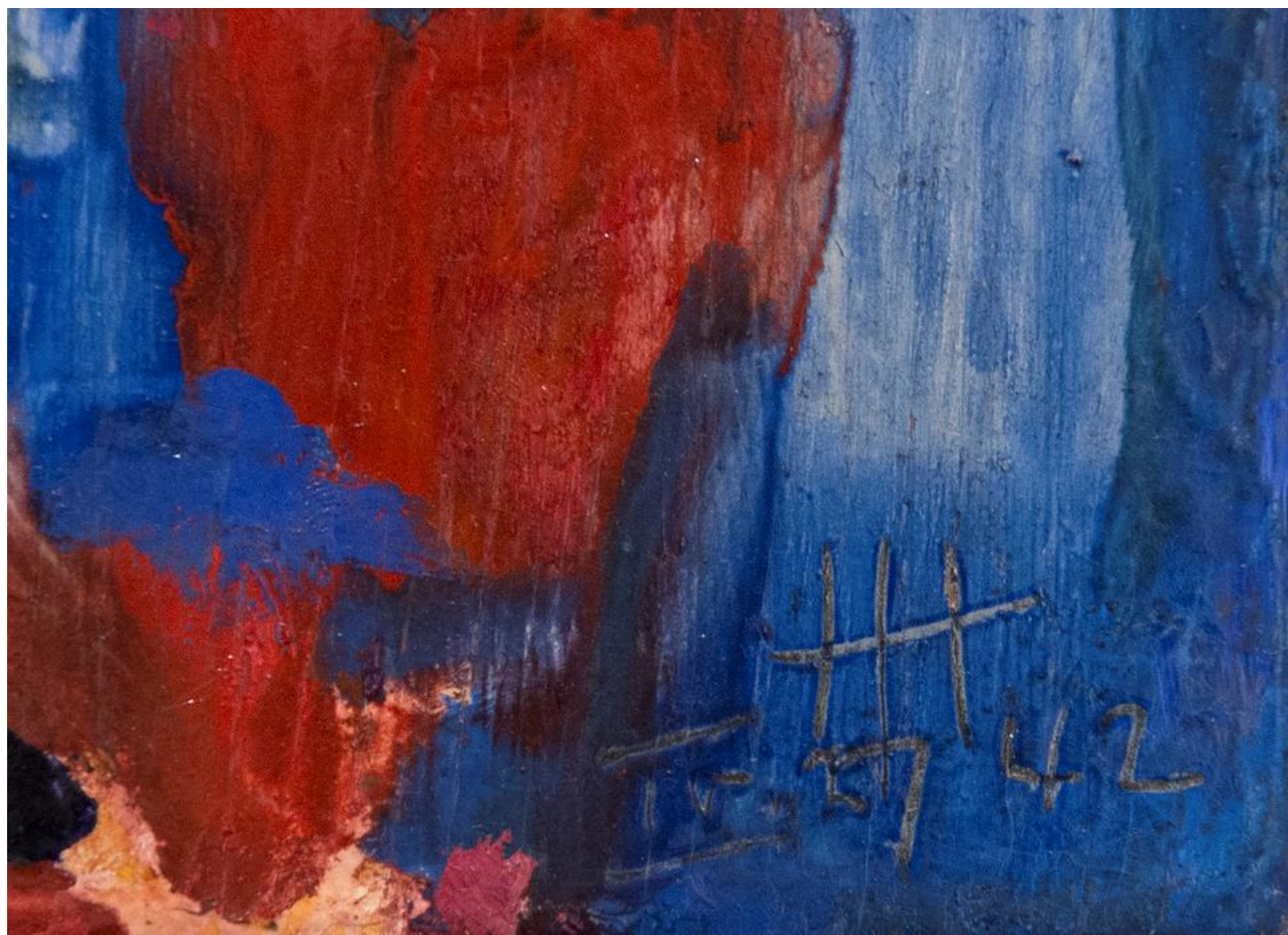
In 1930 Hofmann went to teach at the University of Berkeley and in 1932 settled in New York where he taught art at the Art Students League and later again opened his own schools in Manhattan and Provincetown, Mass. For eager young American artists constrained by the aftermath of WWII and the Depression, contact with Hofmann served as an invaluable connection with European Modernism. Noted art historian Clement Greenberg called Hofmann "in all probability the most important art teacher of our time." His school remained a vital presence in the New York art world until 1958 when the then seventy-eight year old Hofmann decided to devote himself full-time to painting.

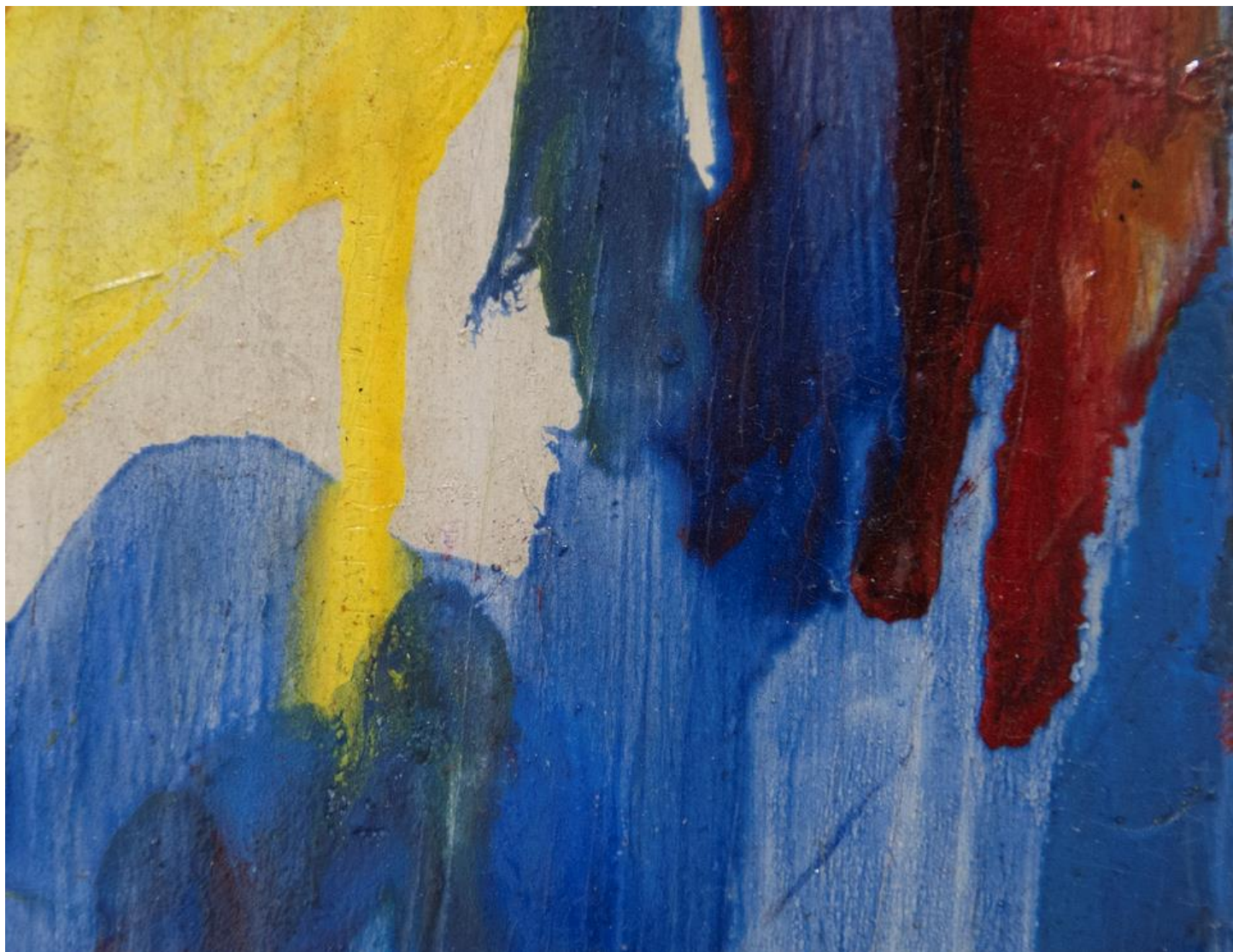
Combining Cubist structure and intense Fauvist color, Hofmann created a highly personal visual language, continuously exploring pictorial structures, spatial illusion and chromatic relationships and creating volume through contrasts of color, shape and surface. Also a prominent writer on modern art, his push/pull theory is a culmination of many of his ideas and describes the plasticity of three-dimensionality translated into two-dimensionality. Due to a dazzling burst of creative energy when he was close to 70 years old, his most highly recognizable canvases are from the late 1950's and 1960's, paintings of stacked, overlapping and floating rectangles and clear, saturated hues that assured his reputation and cemented him as a key member of the Abstract Expressionists.

The information and material herein represents Gallery's best efforts and understanding of the current history and scholarship with respect to the provenance of the Work(s) of Art described and is not part of any warranty.

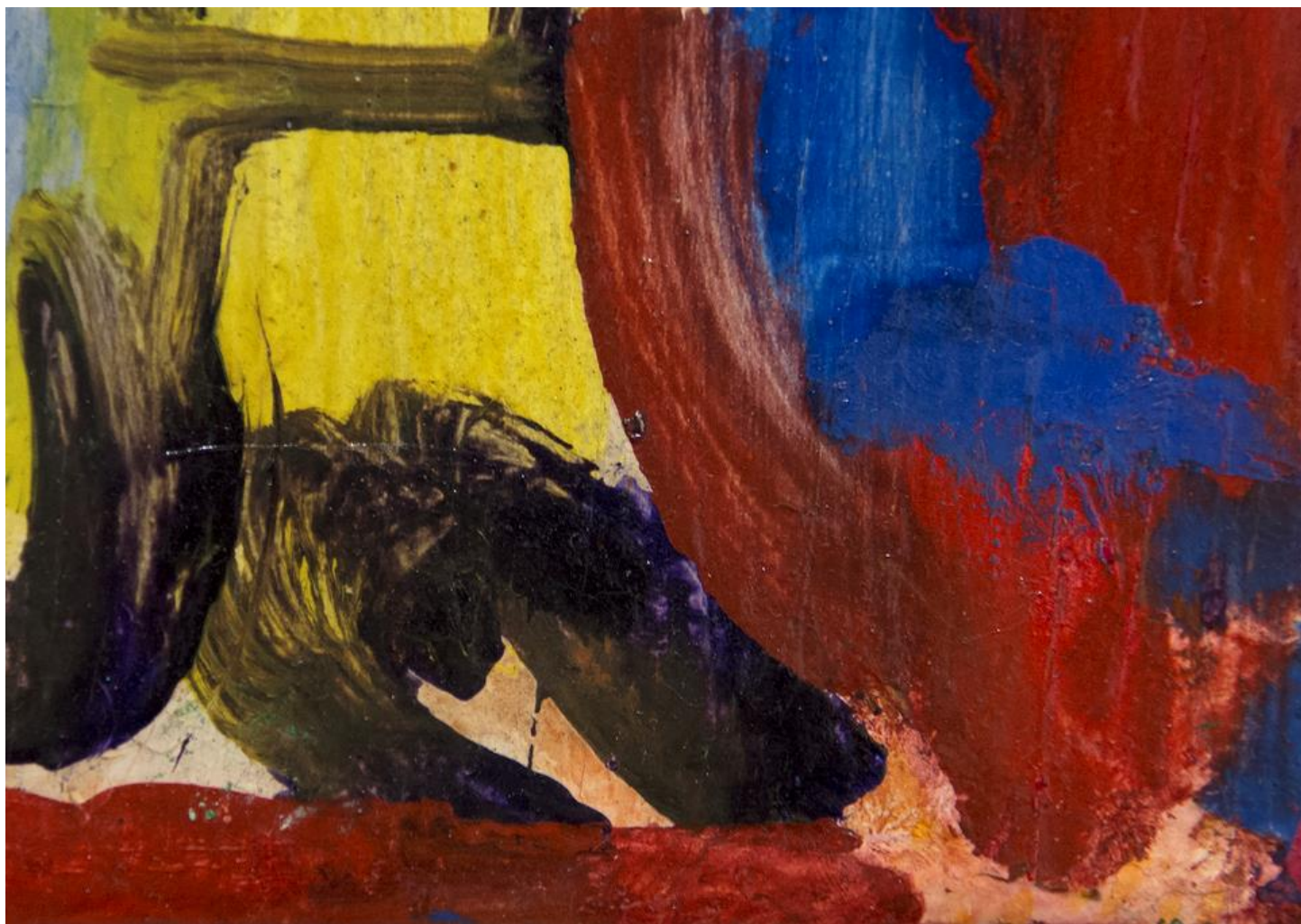














HANS HOFMANN

Yellow Vase, 1942

Oil on panel:

8 x 7-1/2 inches

20.3 x 19.1 cm

Initialed and dated lower right: "HH IV 27 42"

(MMG#1890)

Capat: 578-1940
The yellow vase 8 x 7 1/2 1940

Hans Hofmann -
oil on plywood

M 30

**AMERINGER
HOWARD**

HANS HOFMANN

Yellow Vase

1942

Oil on plywood:

8 x 7-1/2 inches

20.3 x 19.1 cm

A/H #1890 HH-EST# M-0354

41 East 57th Street New York NY 10022 tel 212 905 1110 fax 212 905 1111



Hans Hofmann

Yellow Vase, 1942

Oil on plywood

8" x 7 1/2"

20 x 19 cm.

Signed and dated lower right.

HH-EST#M-354



ALLEGHENY PRODUCTIONS
Custom Picture Framing

This hand-made frame has been finished using
environmentally friendly techniques. Our quality
water-based gesso and expert archival methods
insure a long life for your artwork and for our planet.
For more information, please visit our website:
www.alleghenyproductions.net

147 West 29th Street, 3rd Fl., New York, NY 10001 (212) 967-9070 allegheny@prodnet.net

Label: 578 - 1940

The yellow vase 8 x 7 1/2 1940

Hans Hofmann
oil on plywood

M 35

AMERINGER
HOWARD

HANS HOFMANN

Yellow Vase

1942

Oil on plywood:

8 x 7-1/2 inches

20.3 x 19.1 cm

A/H #1890 HH-EST# M-0354