



## **HANS HOFMANN (1880-1966)**

### **Untitled**

#### **(View of Provincetown Harbor)**

Stamped verso by the estate of Hans Hofmann

oil on panel

17 1/4 x 23 1/8 in. (25 1/2 x 31 1/2 x 3 in.)

43.82 x 58.74 cm (64.77 x 80.01 x 7.62 cm)

c. 1937

23902

### **PROVENANCE:**

Estate of the Artist, 1966-1996

Renate, Hans & Maria Hofmann Trust, 1996-2006

Ameringer Yohe Fine Art, New York, 2006

Hackett-Freedman Gallery, San Francisco, 2006

Private Collection, San Francisco, 2006, acquired from the above

### **EXHIBITION:**

Philadelphia, Pennsylvania, Makler Gallery, *Hans Hofmann*, 1981

La Jolla, California, Thomas Babeor Gallery, *Hans Hofmann: Paintings and Works on Paper*, 1985

New Orleans, Louisiana, Arthur Roger Gallery, *Hans Hofmann: Paintings*, 1986

New York, New York, Ameringer Yohe, *Hans Hofmann: Provincetown*, 2003

### **LITERATURE:**

Villiger, S. Ed (2014), *Hans Hofmann Catalogue Raisonné of Paintings, Volume II: 1901-1951*, London. cat. no. P160, p. 100

Makler Gallery (1981), Philadelphia, Exhibition announcement card

Hans Hofmann is one of the most important figures of postwar American art. German born, he played a pivotal role in the development of Abstract Expressionism as an influential teacher of generations of artists in both Germany and America.

Born in Bavaria and educated in Munich, Hofmann studied science and mathematics before studying art. Moving to Paris in 1904, he studied at both the Academie de la Grande Chaumiere and the Academie Colarossi and was influenced by Picasso, Braque, Delaunay, Leger and Matisse, many of whom he met and became friendly. Hofmann moved back to Munich after WWI and opened an innovative art school, transmitting what he learned from the avant-garde in Paris and attracting students from Europe and the United States.

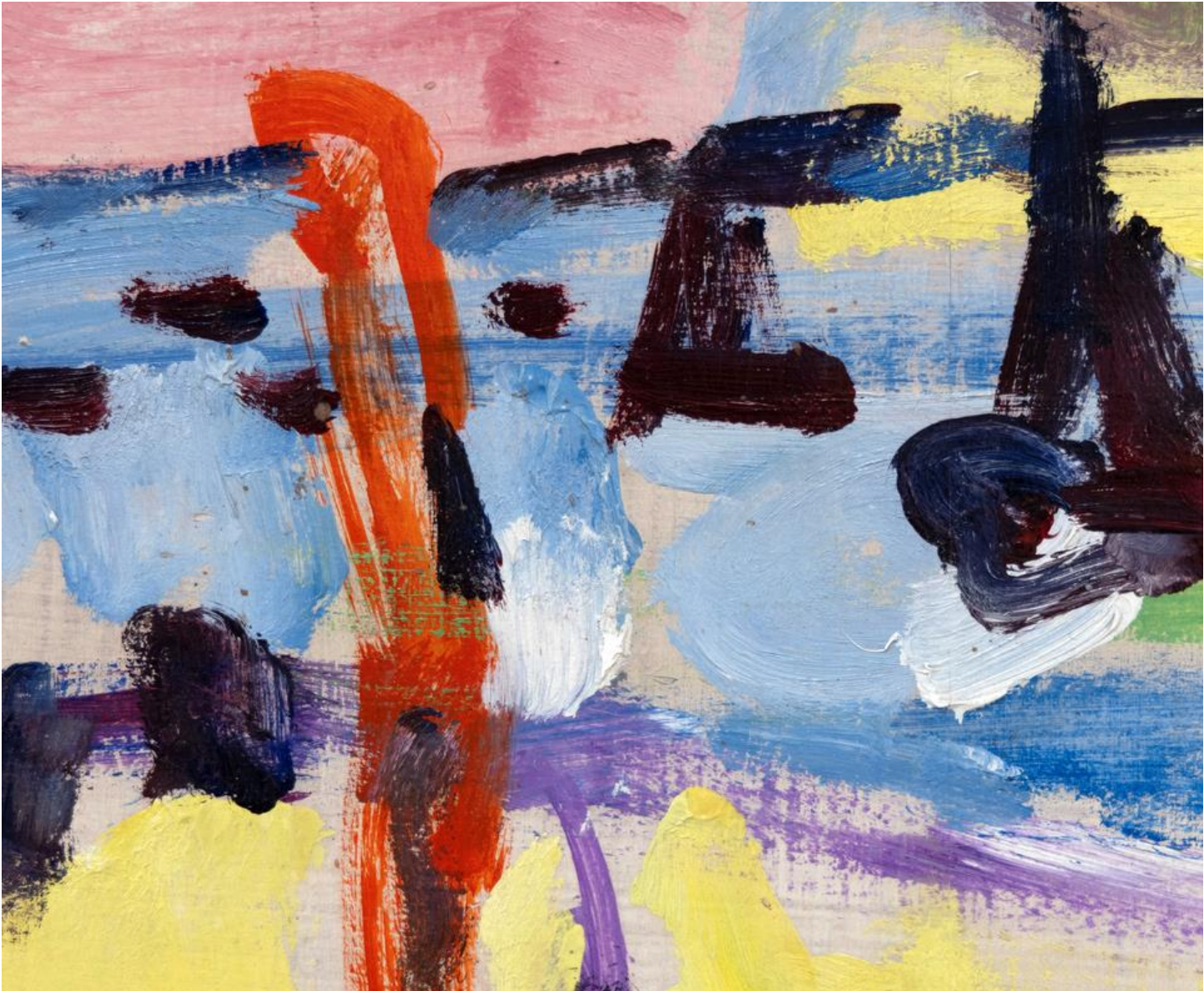
In 1930 Hofmann went to teach at the University of Berkeley and in 1932 settled in New York where he taught art at the Art Students League and later again opened his own schools in Manhattan and Provincetown, Mass. For eager young American artists constrained by the aftermath of WWII and the Depression, contact with Hofmann served as an invaluable connection with European Modernism. Noted art historian Clement Greenberg called Hofmann "in all probability the most important art teacher of

our time." His school remained a vital presence in the New York art world until 1958 when the then seventy-eight year old Hofmann decided to devote himself full-time to painting.

Combining Cubist structure and intense Fauvist color, Hofmann created a highly personal visual language, continuously exploring pictorial structures, spatial illusion and chromatic relationships and creating volume through contrasts of color, shape and surface. Also a prominent writer on modern art, his push/pull theory is a culmination of many of his ideas and describes the plasticity of three-dimensionality translated into two-dimensionality. Due to a dazzling burst of creative energy when he was close to 70 years old, his most highly recognizable canvases are from the late 1950's and 1960's, paintings of stacked, overlapping and floating rectangles and clear, saturated hues that assured his reputation and cemented him as a key member of the Abstract Expressionists.

The information and material herein represents Gallery's best efforts and understanding of the current history and scholarship with respect to the provenance of the Work(s) of Art described and is not part of any warranty.





















HRS 2008

HANS HOFMANN  
18 x 24" of an OMBP 1937

EMERSON MUSEUM  
18 x 24 inches, 18" x 24"  
18 x 24 inches

Thomas Watson Gallery 1415 Grand Avenue, LA JOLLA, CA 92037  
HANS HOFMANN  
18 x 24 inches  
February 4 - April 8, 1985

908  
HANS HOFMANN  
18 x 24 inches  
18 x 24 inches  
18 x 24 inches

Hofmann  
THE ESTATE OF HANS HOFMANN

806  
ESTATE OF HANS HOFMANN

2909 I

806#

M-0708  
M-0908  
M-0908

C12

18 x 24 inches