

**HASSEL SMITH (1915-2007)**

**More and More about 9**

**Estate #S23**

Signed lower left, "Has 1980"

acrylic on canvas

68 x 68 in. (68 5/8 x 68 5/8 x 2 1/4 in.)

1980

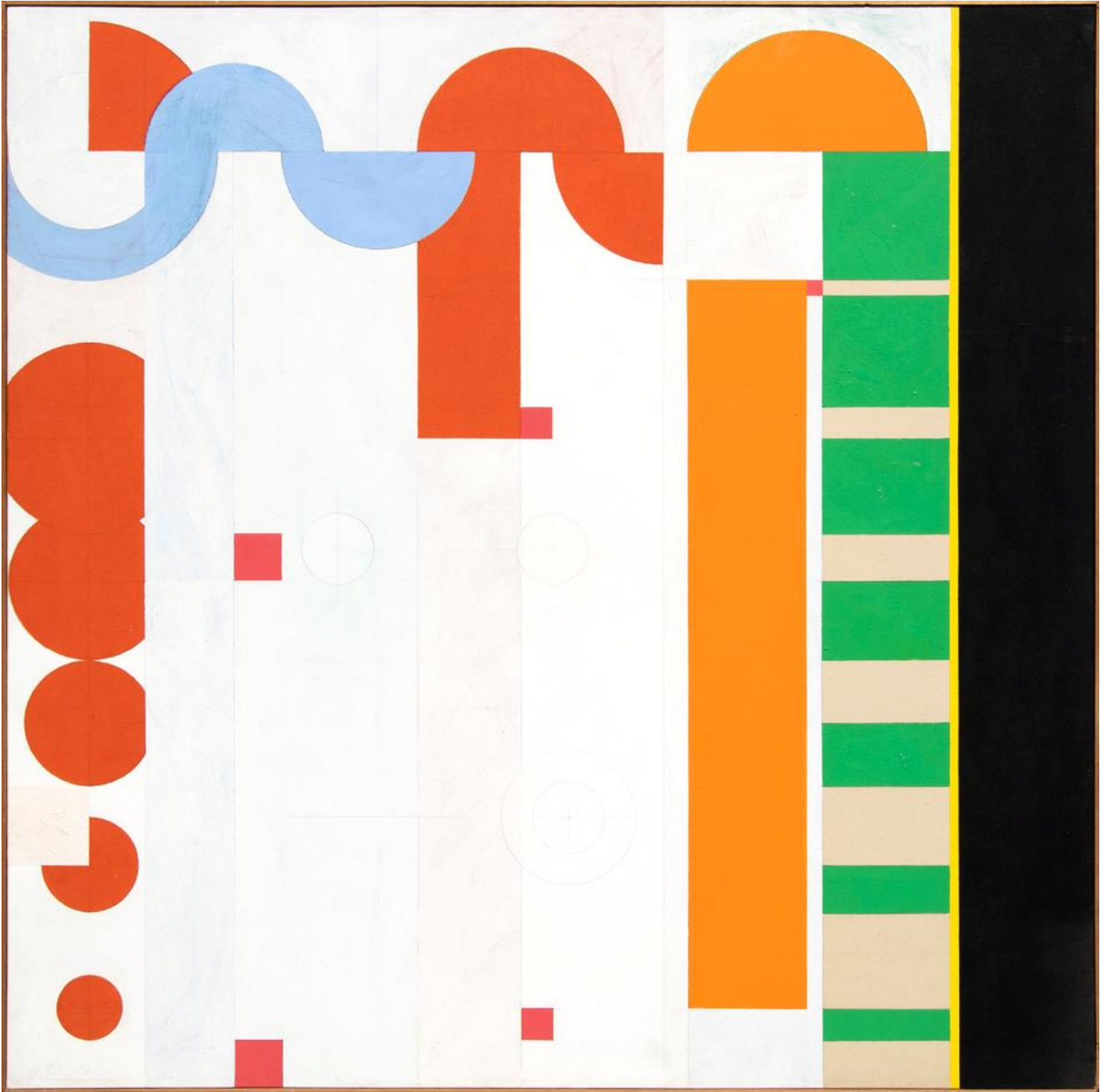
27595

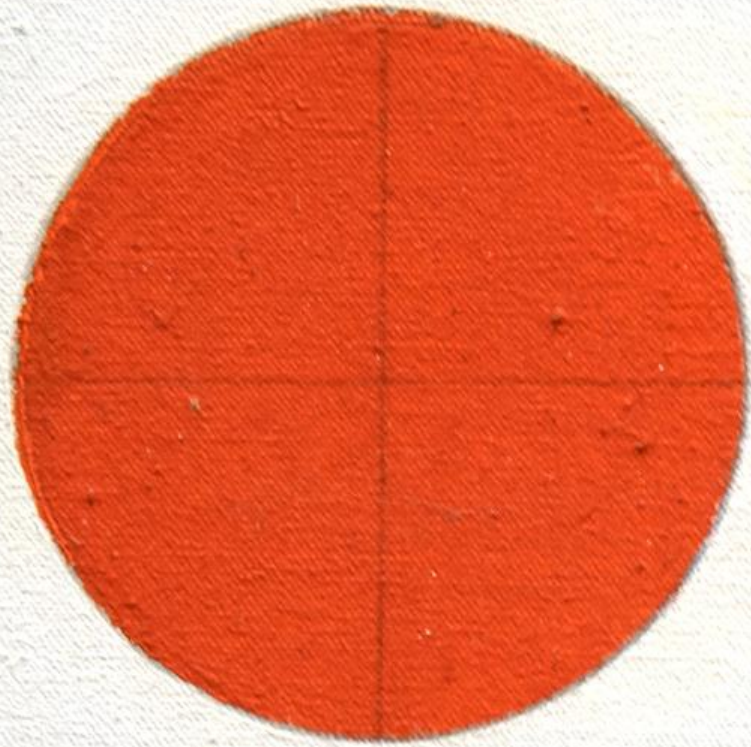
**PROVENANCE:**

Estate of Hassel Smith

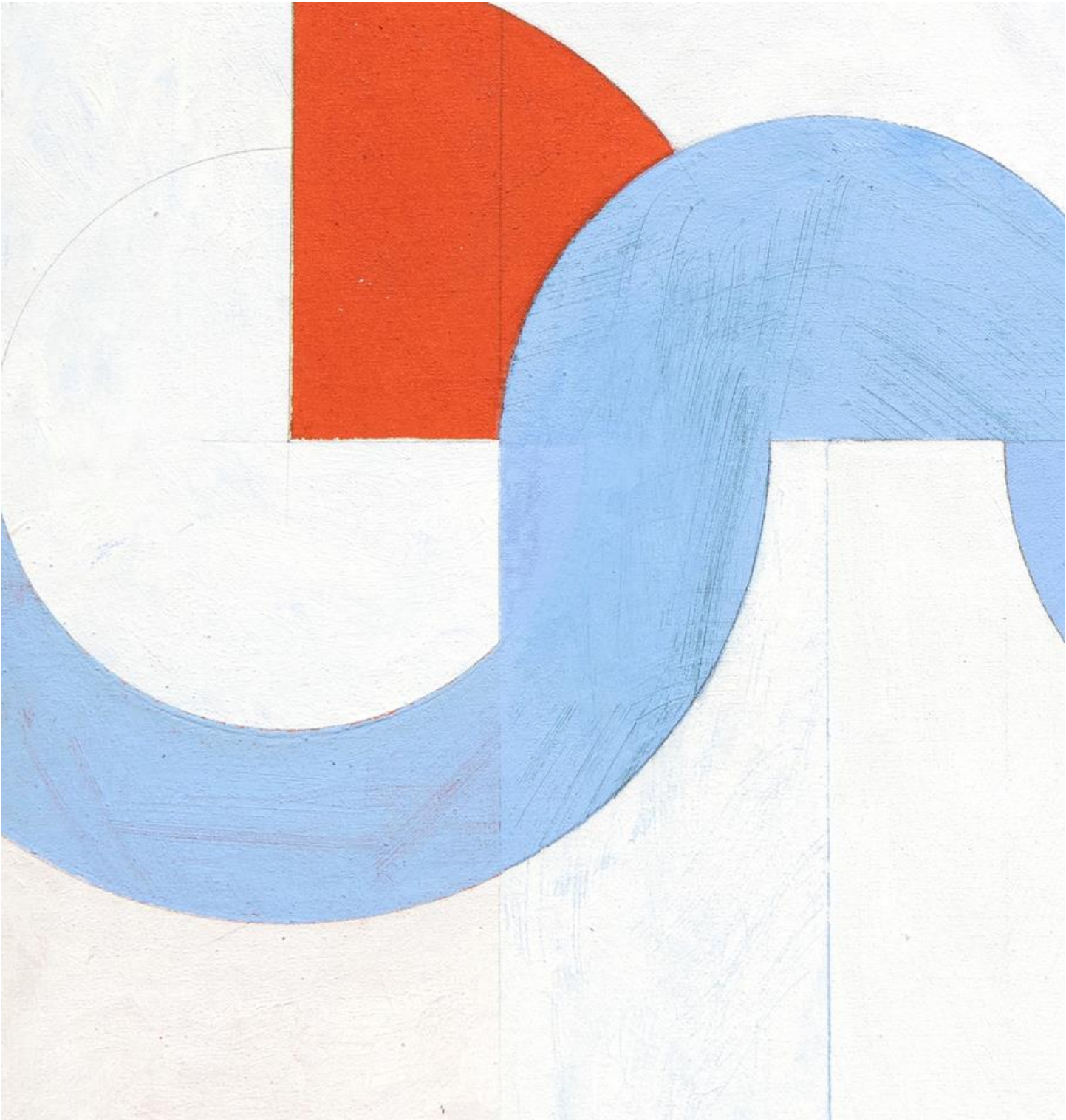
Considered by critics as a "West Coast underground legend," Hassel Smith was an influential member of the experimental school of artists that emerged from post-World War II California. Together with Clyfford Still, Mark Rothko, and Richard Diebenkorn, Smith made his name at the California School of Fine Arts (now the San Francisco Art Institute) and from 1950 until the mid-1960s with successful exhibitions in Europe and on both coasts of the US. While his breakthrough paintings are characterized by their wildly vibrant brushstrokes and explosions of color, Smith was equally adept in a more restrained style, producing in later years the magisterial sequence of "measured" abstractions.

The information and material herein represents Gallery's best efforts and understanding of the current history and scholarship with respect to the provenance of the Work(s) of Art described and is not part of any warranty.

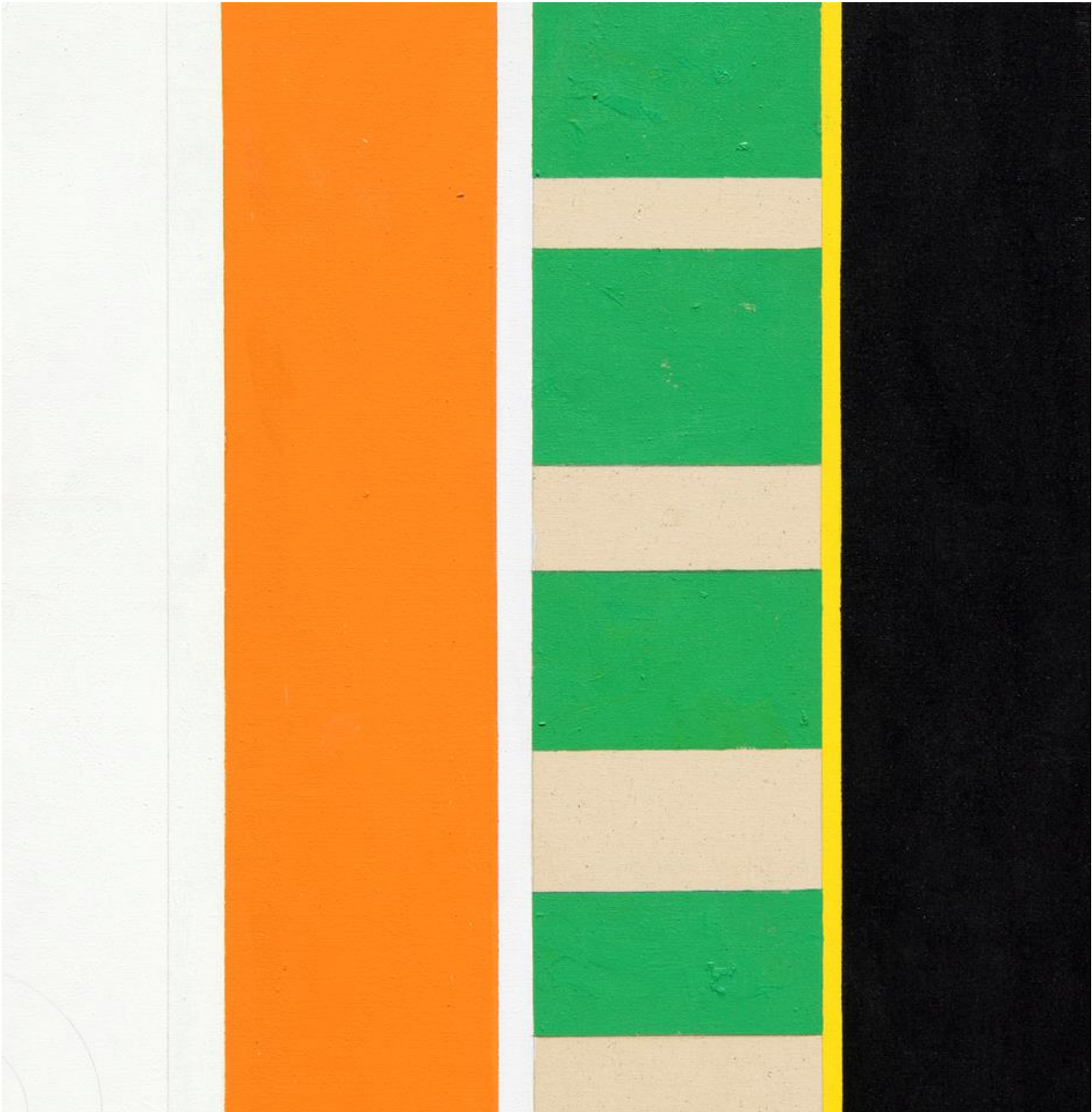


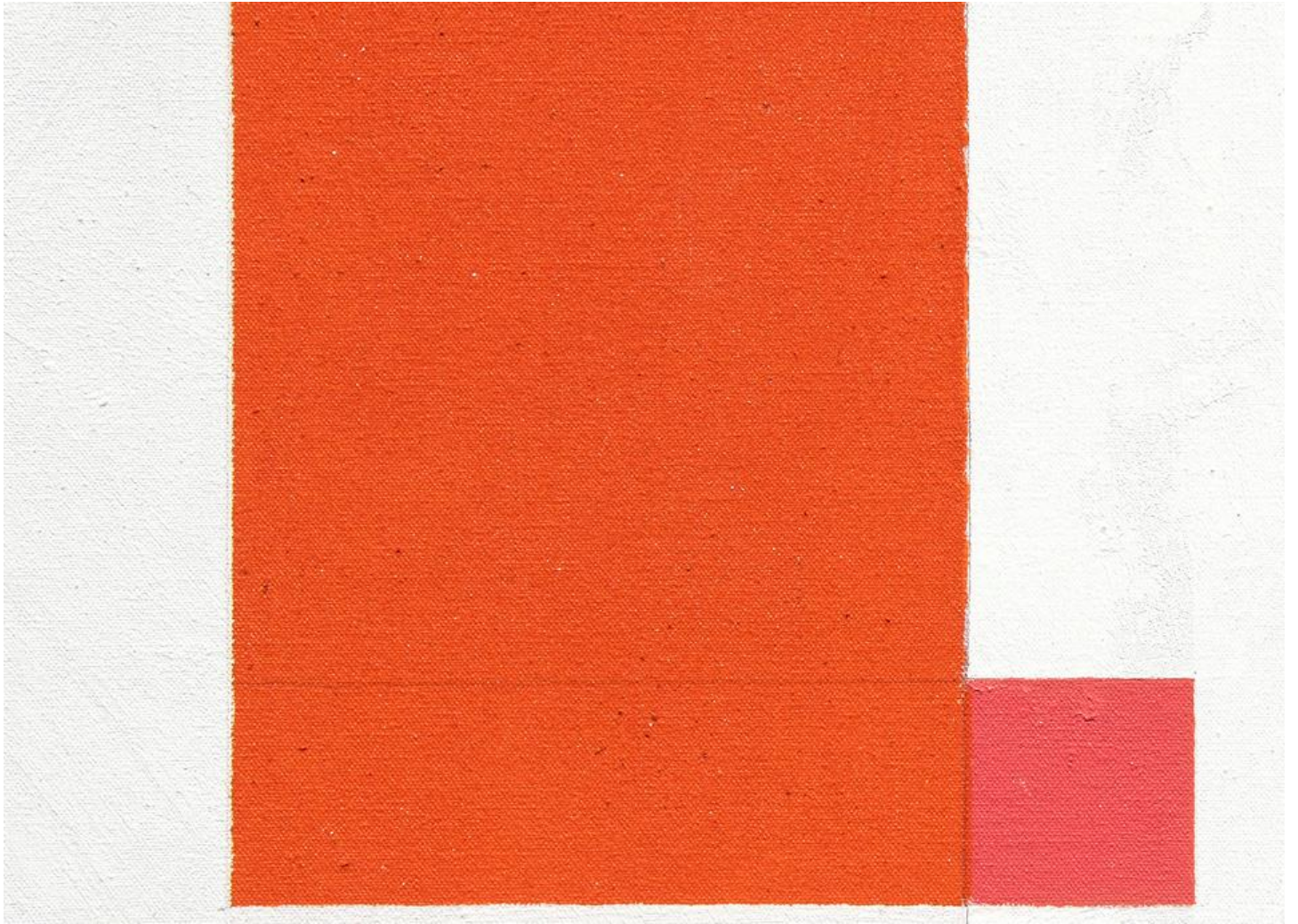


W. 1980



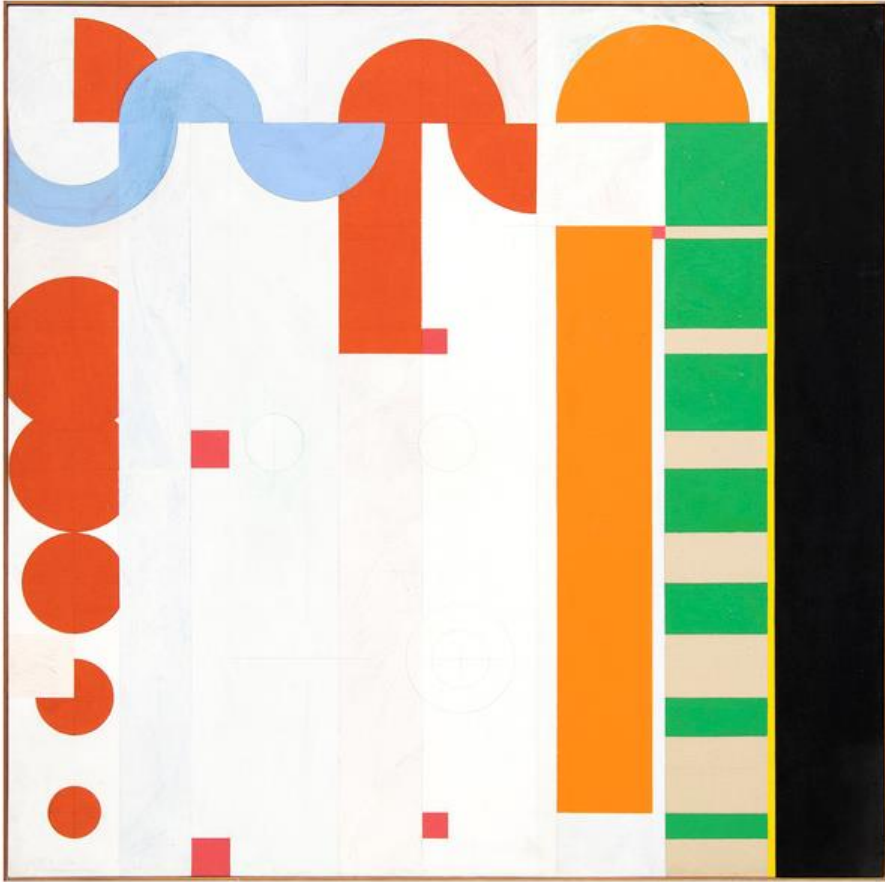














↑'R

Hanel  
Smith

1980

more + more about  
9"

HS 807

S-23

4