

HASSEL SMITH (1915-2007)

From A - B

Estate #S59

Signed verso, "Hassel Smith 1976"

acrylic on canvas

68 x 68 in. (68 3/4 x 68 3/4 x 2 1/2 in.)

1976

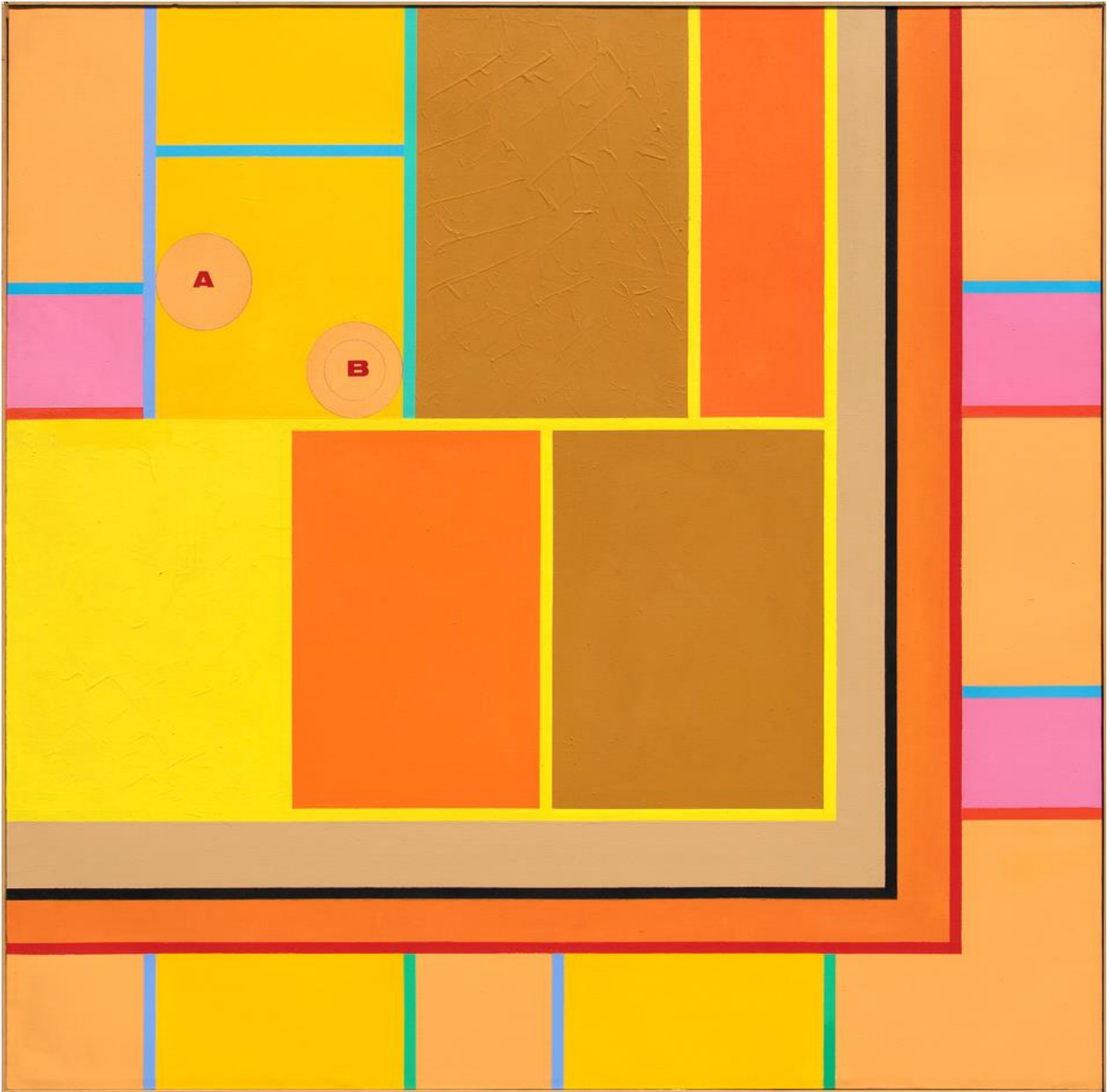
27612

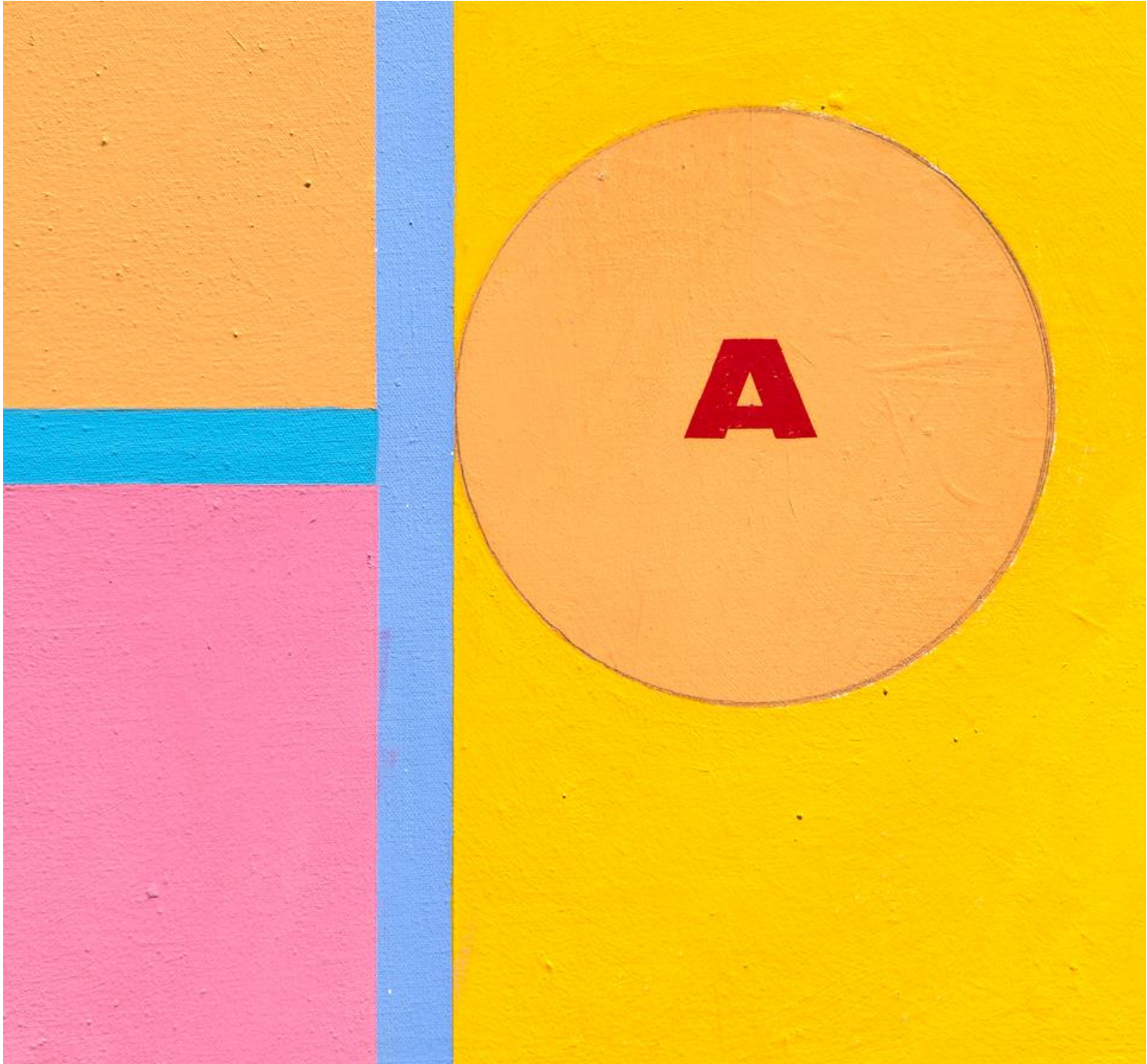
PROVENANCE:

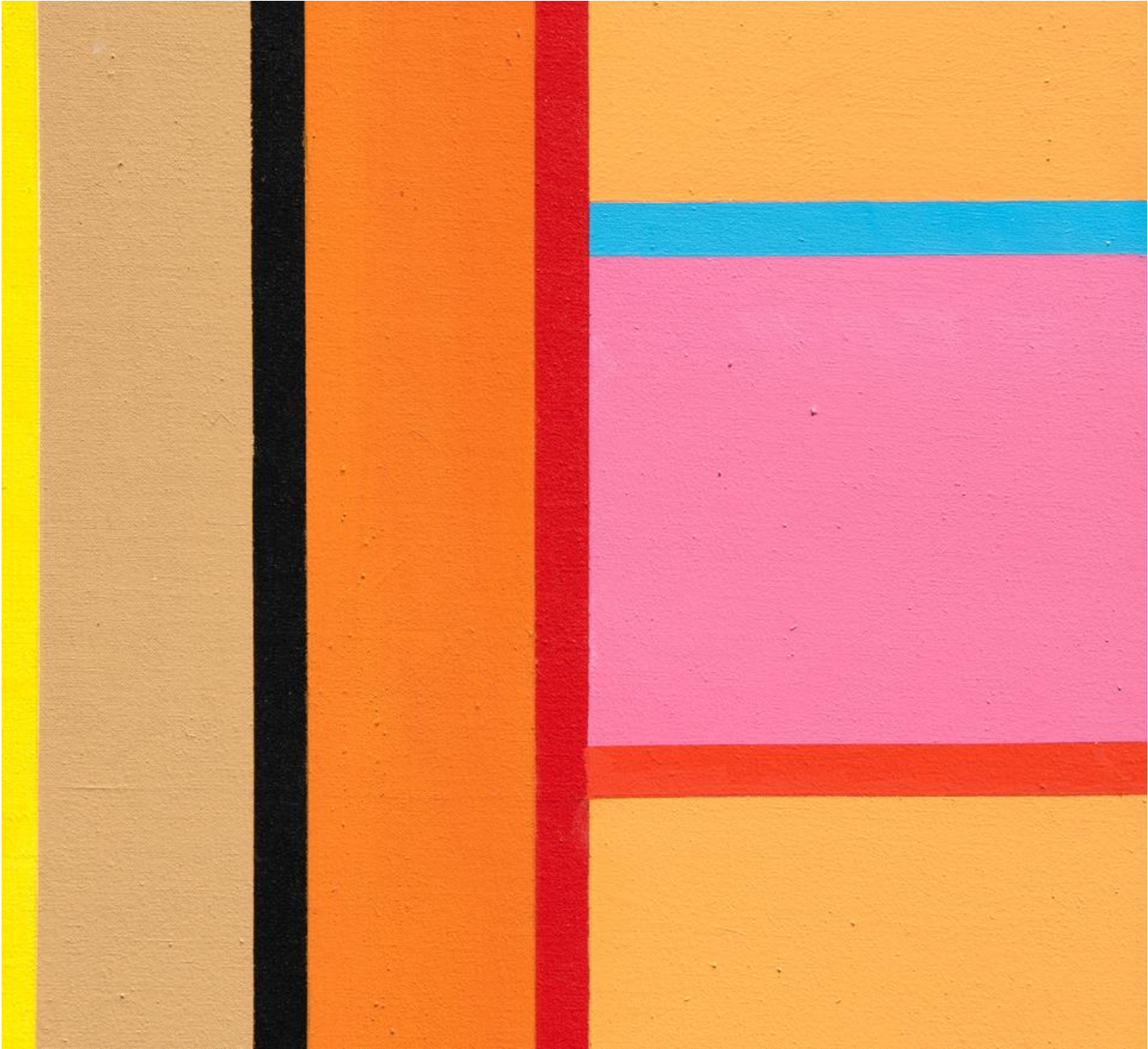
Estate of Hassel Smith

Considered by critics as a "West Coast underground legend," Hassel Smith was an influential member of the experimental school of artists that emerged from post-World War II California. Together with Clyfford Still, Mark Rothko, and Richard Diebenkorn, Smith made his name at the California School of Fine Arts (now the San Francisco Art Institute) and from 1950 until the mid-1960s with successful exhibitions in Europe and on both coasts of the US. While his breakthrough paintings are characterized by their wildly vibrant brushstrokes and explosions of color, Smith was equally adept in a more restrained style, producing in later years the magisterial sequence of "measured" abstractions.

The information and material herein represents Gallery's best efforts and understanding of the current history and scholarship with respect to the provenance of the Work(s) of Art described and is not part of any warranty.



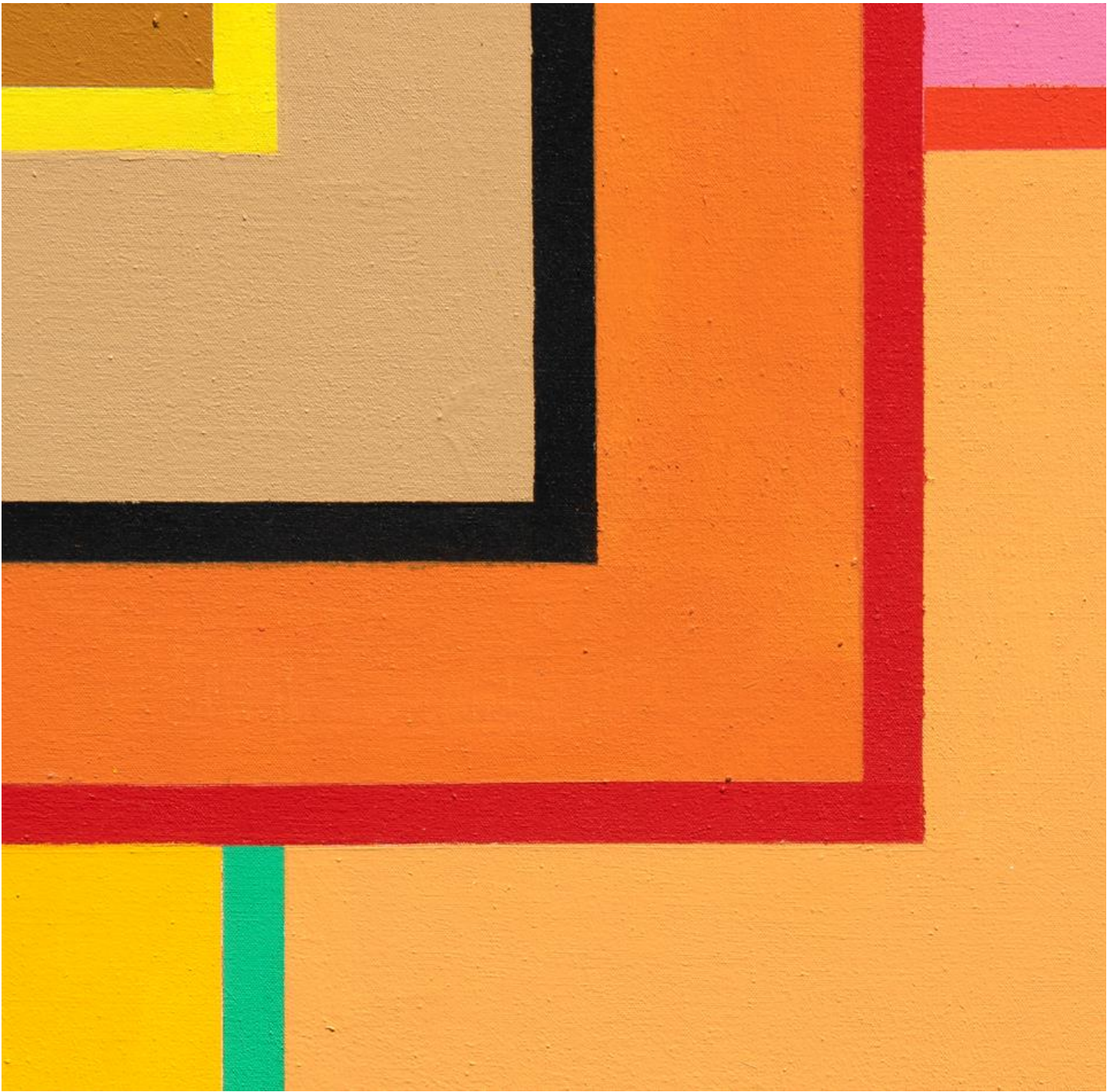


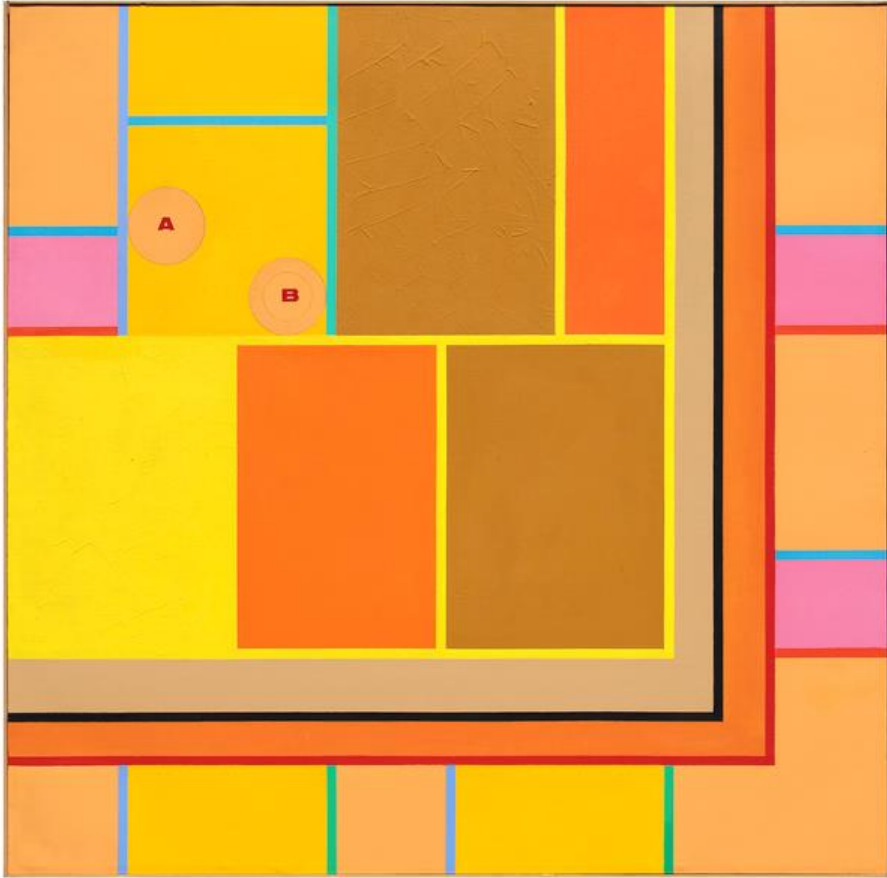






B







↑ up
Hazel Smith
1976

S-59

4

↑ up

Hazel Smith
1976

C-59