



**GEORGE CONDO (b. 1957)****Abstract Face**

oil on board

15 7/8 x 11 3/4 in. (19 5/8 x 15 5/8 x 1 1/4 in.)

1983

28604

**PROVENANCE:**

Pat Hearn Gallery, New York

Ikeda Gallery, New York

Maruani & Noirhomme Gallery, Belgium

Private Collection, Belgium

Phillips de Pury, "Contemporary Art Part II", Sale NY010411, Lot 228, 11 August 2011

Private Collection, Puerto Rico

**EXHIBITION:**

Belgium, Maruani & Noirhomme Gallery, The Essence of George Condo: 1983-1996,  
December 17, 2005 - February 5, 2006

Born in Concord, New Hampshire, George Condo went on to study art history and music theory at Lowell University. In the early 1980's the artist moved to New York where he collaborated with members of Andy Warhol's Factory, such as Jean-Michel Basquiat and Keith Haring, and leaders of the Beat Generation, including William S. Burroughs and Allen Ginsberg. His work, primarily paintings and some sculptural pieces, is housed in permanent collections of major museums worldwide including the Museum of Modern Art and the Guggenheim. Condo was honored as one of the United States' premier contemporary artists with an Academy Award from the American Academy of Arts and Letters in 1999 and the Francis J. Greenberger Award in 2005. Condo was even the subject of a documentary released in 2000, "Condo Painting" directed by John McNaughton.

George Condo is a self-proclaimed member of "Kitsch Art," a sect of postmodernism that blurred the distinction between kitsch and high art in the 1980's. Yet his work also seems scratch the surface of surrealism and Dadaism, allowing room for varied interpretations and conceptual connotations. His paintings often play off of uncouth clichés, distorting faces into cubistically fractured portraits that sometimes recall the aesthetics of the likes of Carroll Dunham. He is well known for his aggressive portraits of women, which dismiss any sense of female submissiveness. He frequently leaves the backgrounds undeveloped, so that his characters appear without context and extend into the viewer's own physical world. The artist describes his artistic language as his "own natural reactions, a combination of rational and irrational."

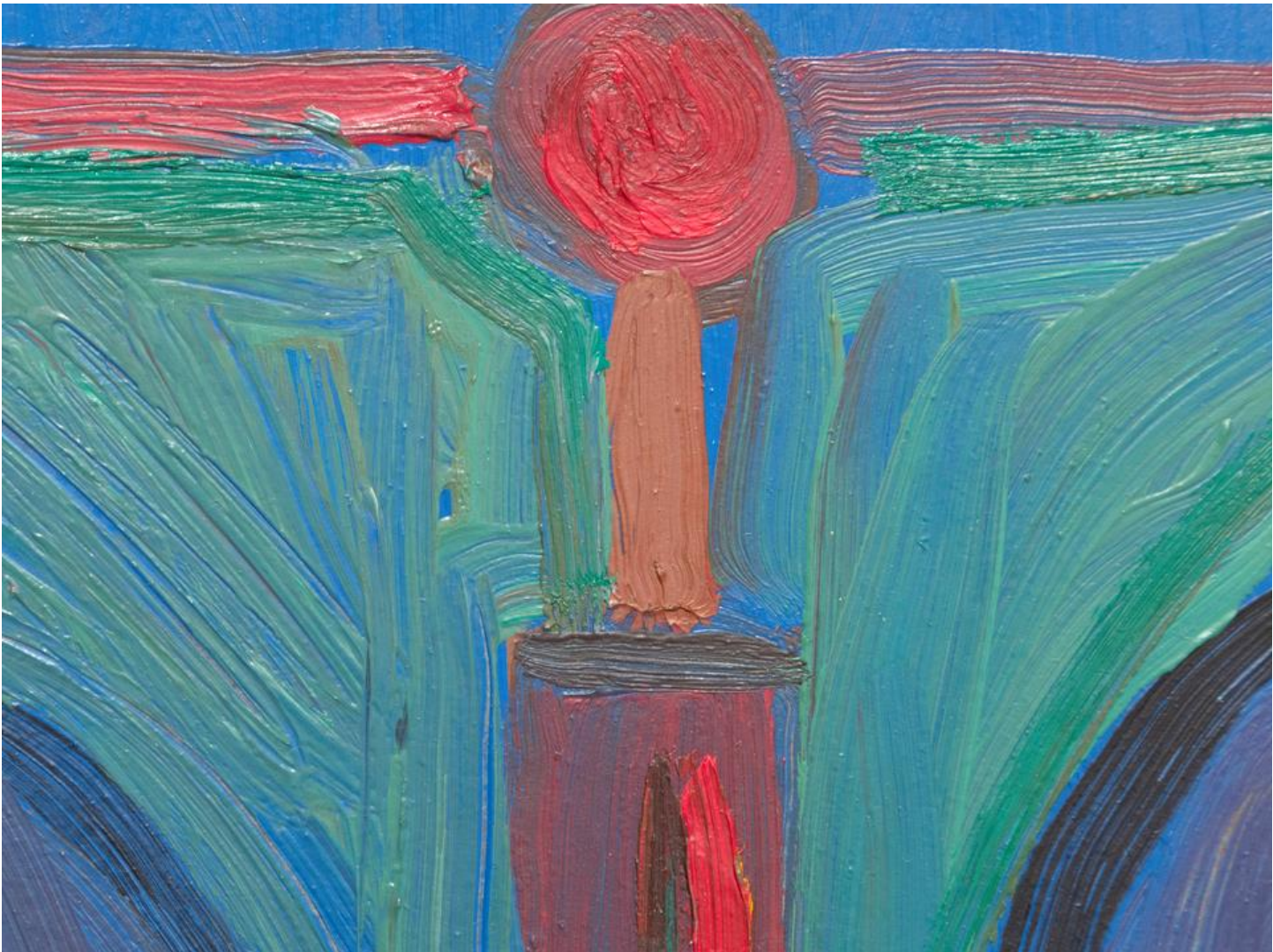
The information and material herein represents Gallery's best efforts and understanding of the current history and scholarship with respect to the provenance of the Work(s) of Art described and is not part of any warranty.

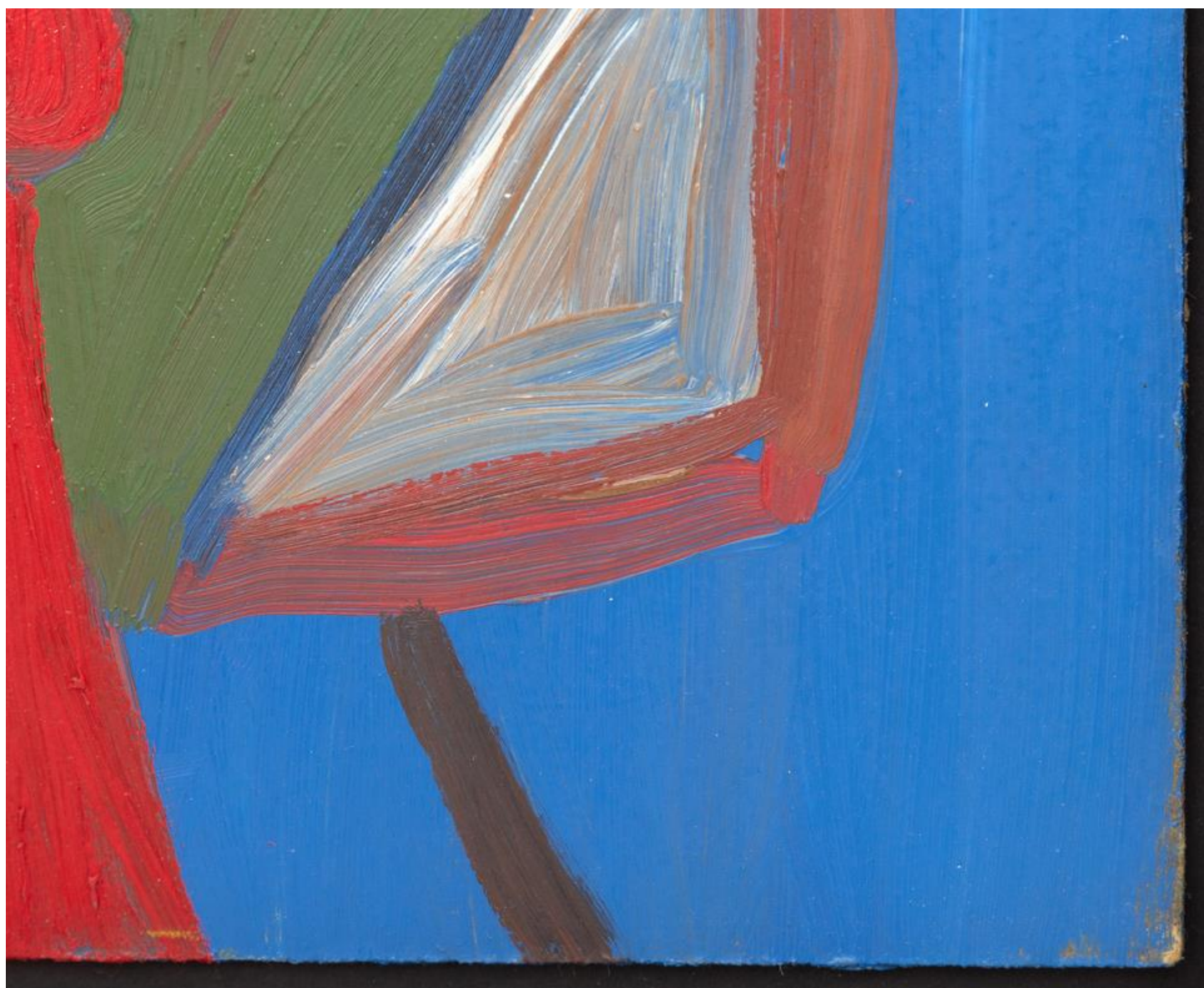












63451

1 / 1

SALENY010411 LOT 220

GEORGE CONDO

Abstract Face



REF#DANY7029-LIC-11 Nov  
ARR 11/01/11

63451

**PAT HEARN GALLERY**

GEORGE CONDO

ABSTRACT FACE 1983

OIL ON BOARD

16" x 11 3/4"

GC-016R

735 E. 9th ST.

~~84 AVENUE B~~ • N.Y.C. 10009 • 212-598

**AKIRA IKEDA GALLERY**

17-30 NISHIKI 2-CHOME, NAKAKU, NAGOYA, 460, JAPAN  
8-18 KYOBASHI 2-CHOME, CHUO-KU, TOKYO, 104, JAPAN

GEORGE CONDO

"Abstract Face", 1983

oil on board

40,6 x 29,8 cm



Condo, George  
b. 1957 Concord NH  
Abstract Face, 1983  
Oil on board  
16 x 11 3/4 in.  
GC001

