

ANNIE LAPIN (b.1978)

Perceived Marriage Tripartite Leave

Signed verso, "Annie Lapin".

acrylic and oil on canvas over panel

96 x 69 in.

2008

2922.b

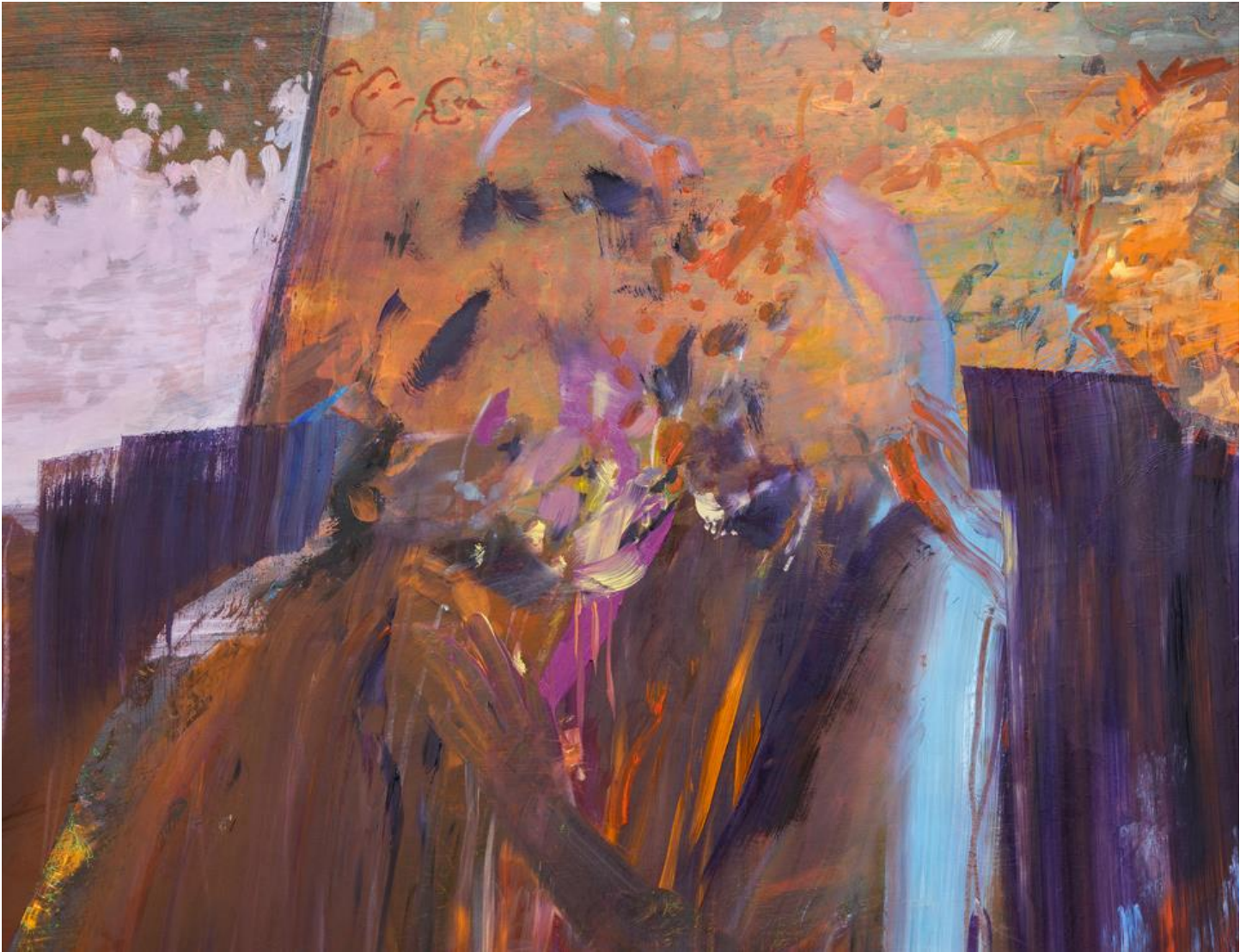
Currently living and working in Los Angeles, Annie Lapin received her graduate degree in 2007 from the University of California, Los Angeles in the Graduate School of Fine Arts. She has participated in many solo and group exhibitions including group shows at Angles Gallery in Santa Monica, Roberts and Tilton in Los Angeles and the Inman Gallery in Houston Texas. She has been selected to be a part of three residency programs throughout the United States and Ireland and has been noted in LA Weekly, The Los Angeles Times, Art Ltd., The Kansas City Star and The Huffington Post, lauding her intriguing and incredibly complicated works.

Her paintings beautifully distort a presupposed, picturesque image of reality while willfully drawing the viewer into a twisted fantasy world of creative imagination. Lapin's paintings are solely derived from her head, as she relies on her own creative energy to direct the painting process. Her paintings exude both confidence and uncertainty which helps add to the energetic feel and vague clarity possessed in her work. Many note that her works can be easily read but takes time and patience to intuitively grasp the feelings buried within her elusive concrete forms. A tactile energy of ideas and forms remain and are worked out on the surface through her artistic process involving scraping, rubbing and smearing of the paint.

Annie Lapin's "Perceived Marriage Tripartite Leave" depicts free formed figures gracefully articulating ambiguity while stationed in an atmosphere engrossed in a tense separation between chaos and resolution. The figures are generalized and primitive in design, as her style is often likened to the styles of the Bay Area Figurative painting of the 1950's and Neo-Expressionism of the 1980's. A sense of emotional urgency and chromatic intensity is highlighted by her defining sweeping brushstrokes of purple, brown and aqua. The scene appears raw and uneasy but is infused with a strong balance to ease the tension between the fear and fearlessness felt by the viewer.

The information and material herein represents Gallery's best efforts and understanding of the current history and scholarship with respect to the provenance of the Work(s) of Art described and is not part of any warranty.















AL 2003

Small white label with illegible text.

A.L. 2008