



TOON KELDER (1894-1973)

Untitled

Signed in paint lower right "Kelder '50"

oil on canvas

44 1/2 x 57 1/2 in.

1950

31466

PROVENANCE:

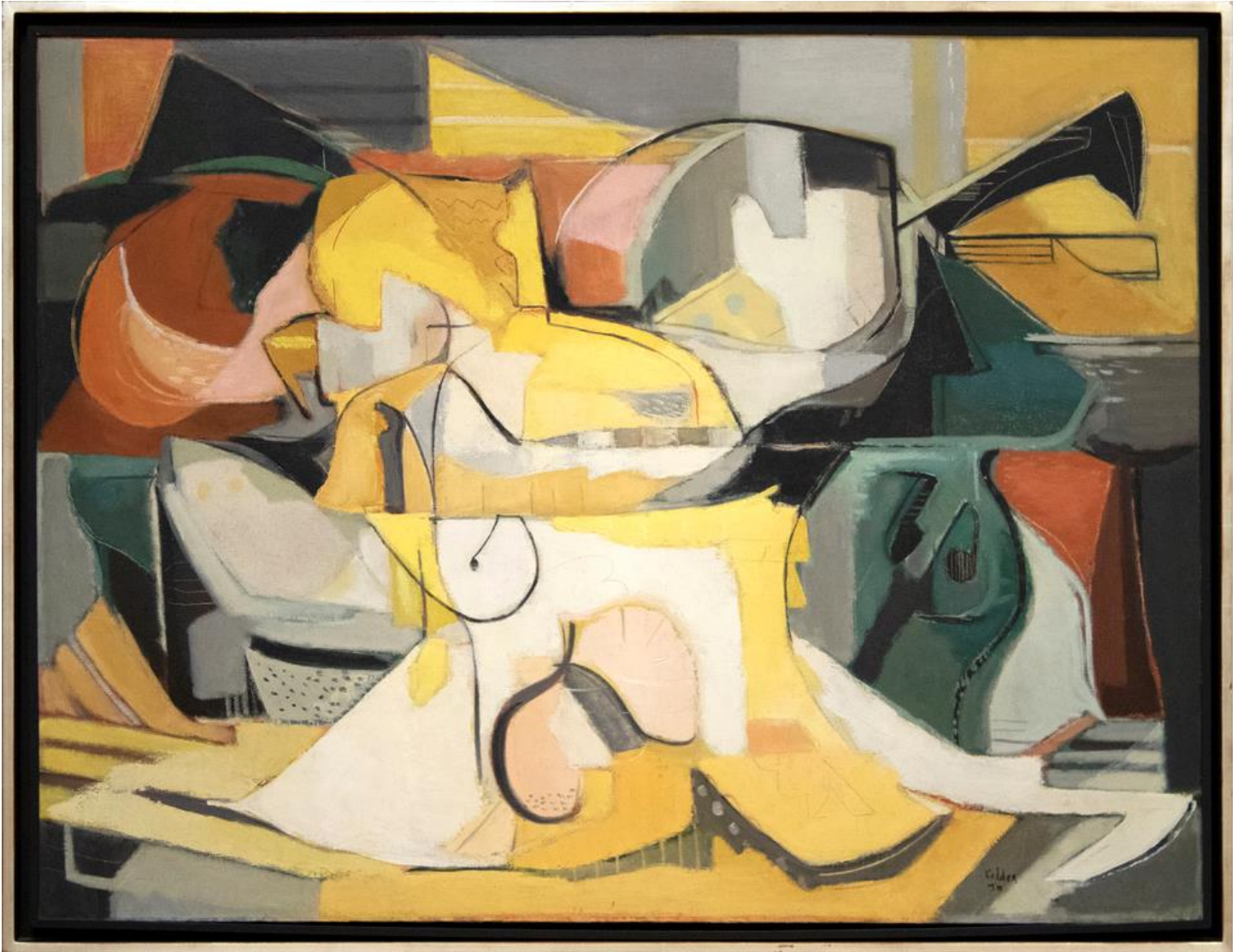
Sotheby's Amsterdam: Tuesday, December 2, 2003 [Lot 00118], Modern and Contemporary Art incl. Belgian Art
Private Collection, Washington

Toon Kelder (1894 – 1973) was a Dutch Impressionist and Modern painter, who exhibited a tremendous versatility of styles over the course of his career. After studying at the Royal Academy of Art in The Hague and the Rotterdam Academy of Art, Kelder's early work is characterized by an expressionist style and dark tones, much like other work from the Burgen School in Dutch painting. In his mid-career, Kelder began painting with a more traditional style similar to the Hague School, characterized by thin, diffuse brushstrokes and a lighter palette. His subject matter also varied widely, creating landscapes, cityscapes, still lifes, interior scenes, portraits, and female nudes.

After World War II, Kelder became focused on reducing his art to its pure, formal elements. As a way to explore fundamental visual elements such as color, line, and plane, Kelder switched to making abstract wire metal sculptures. For the rest of his life, he faithfully pursued this mission through his artmaking, only making abstract art and acquiring a place within the Netherlandish avant-garde.

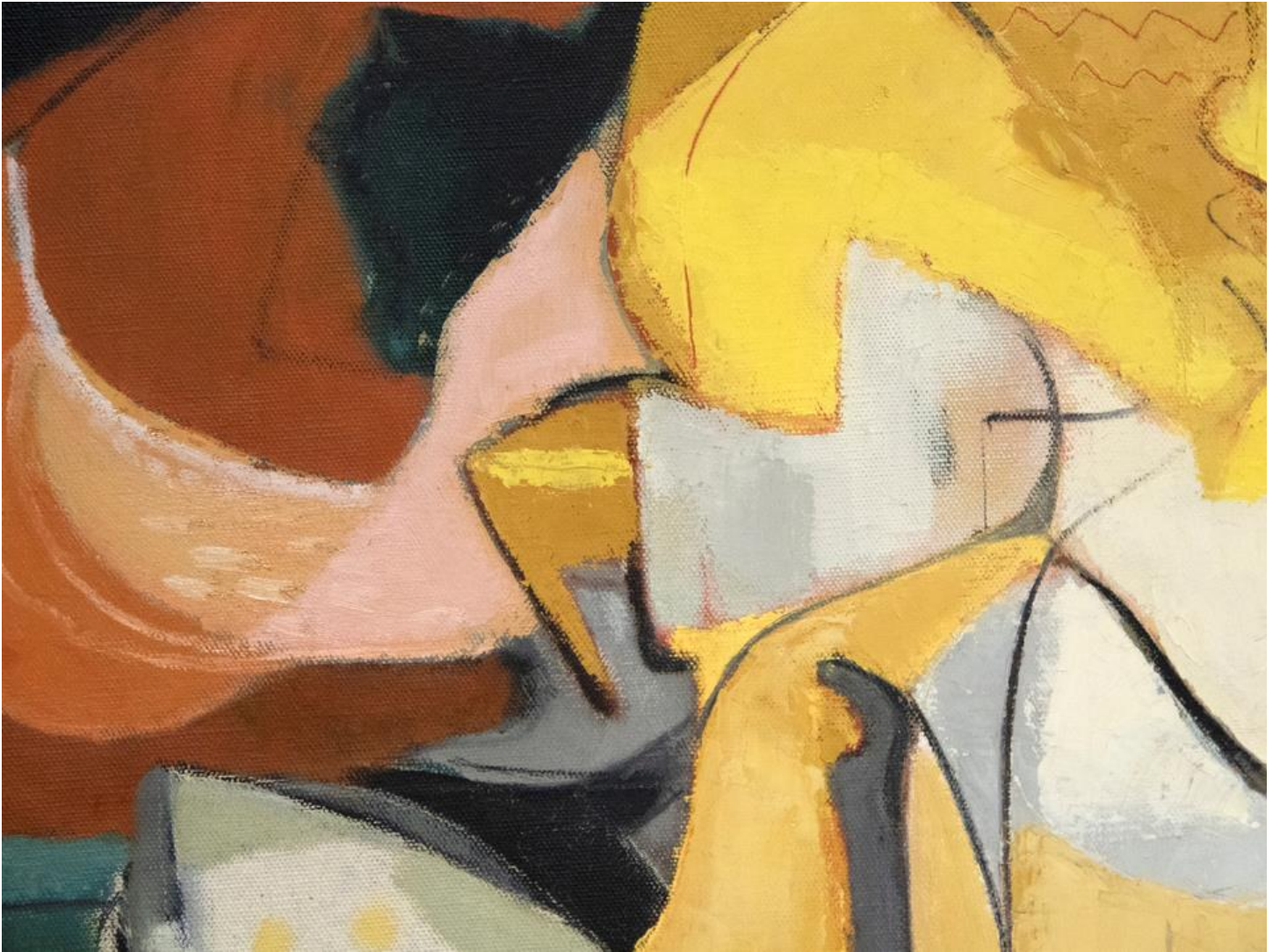
Kelder's work is represented in the public collections of the Gemeentemuseum, The Hague, Netherlands; Boijmans Van Beuingen Museum, Rotterdam; Stedelijk Museum, Amsterdam; Royal Museum of Fine Arts, Antwerp; and the Museum of Modern Art, New York among many others.

The information and material herein represents Gallery's best efforts and understanding of the current history and scholarship with respect to the provenance of the Work(s) of Art described and is not part of any warranty.





Kilder
50















10726

[Small white label]

[Small white label]

5M12.03

[Small black label]