



WINSLOW HOMER



CONTENTS

- **IMPORTANT** FACTS
- **DETAIL** IMAGES
- **MARKET** ANALYSIS
- **TOP** PAINTINGS SOLD AT AUCTION
- **MUSEUM** COLLECTIONS
- **HISTORY**



WINSLOW HOMER (1836-1910)

The Shepherdess

1879

oil on canvas

22 $\frac{3}{4}$ x 15 $\frac{3}{4}$ in. (57.7 x 40 cm)



WATCH VIDEO

PROVENANCE

Lawson Valentine, purchased from the artist in 1879
Elmira Houghton Valentine (Mrs. N.T.) Pulsifer, by descent from above
Natalie Pulsifer Byles and Alice Pulsifer, by descent from above
Davis & Long Company, New York
Private Collection, California, acquired from the above, 1977

EXHIBITION

Storm King Art Center, Mountainville, NY, *Winslow Homer in New York State*, 1963, no. 9, p. 8, ill. p. 18.
The Brooklyn Museum, New York, on long term loan from at least 1932 until 1977
Davis and Long Company, New York, 1977, *American-English Paintings, Watercolors, and Drawings*, ill. no. 10
Los Angeles County Museum of Art, *American Paintings in Southern California Collections: From Gilbert Stuart to Georgia O'Keeffe*, 1996

IMPORTANT FACTS

- Homer created this work in 1879, a time in which he focused mainly on idyllic landscapes, images of children, and young adults in oils and watercolor.
- *The Shepherdess* was a theme he returned to multiple times as it allowed him to depict pastoral landscapes, grounded by young women. While beautiful, we can also sense the work and labor involved in the rural setting, the solitary figure set off by shades of green and dappled spots of reds and oranges.
- The 1870s would be a crucial time for Homer as he stepped away from illustration into new experiments in form and medium. Between 1873-1905, Homer created nearly 700 watercolors.

DETAIL IMAGES

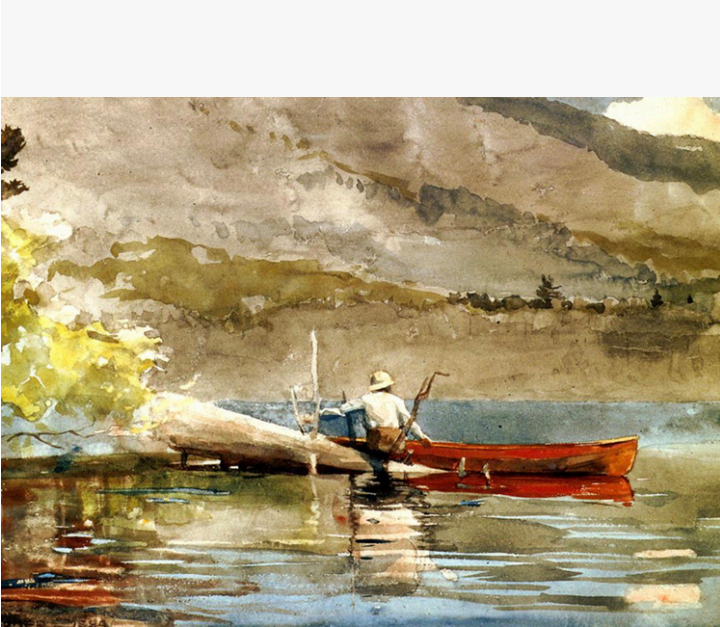








TOP PAINTINGS SOLD AT AUCTION



The Red Canoe

1889

watercolor

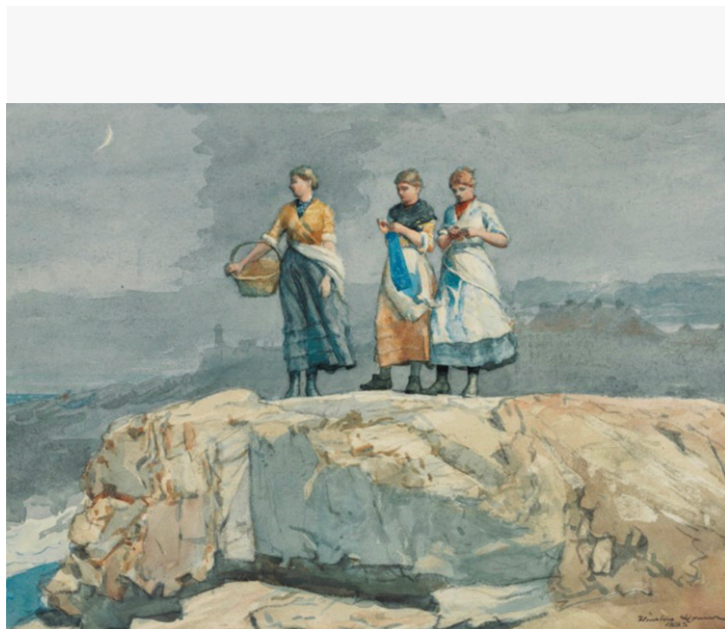
13.7 x 20 in. (34.7 x 50.8 cm)

Sold at auction:

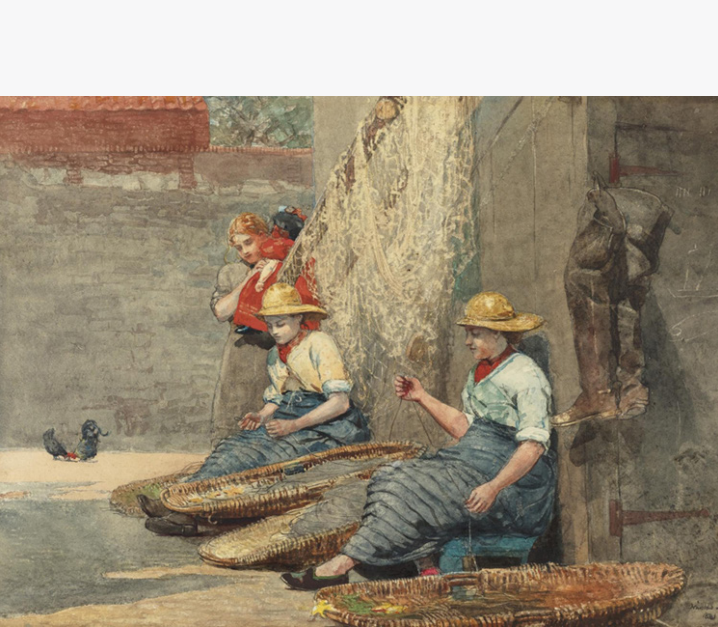
December 1999 for \$4,842,000

Where are the Boats
1883
watercolor and pencil on paper
13.5 x 19.6 in (34.2 x 49.7 cm)

Sold at auction
May 2018 for \$4,572,500



TOP PAINTINGS SOLD AT AUCTION



Fishergirls Coiling Tackle

1881

watercolor

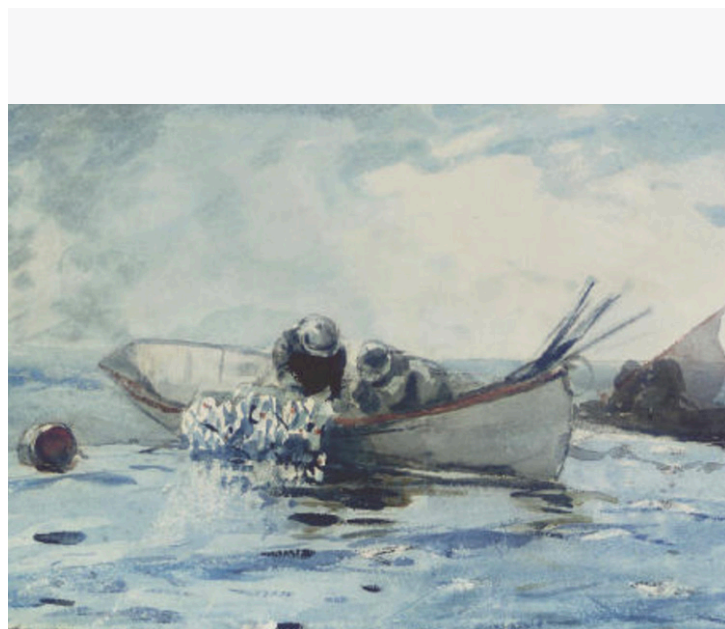
14 x 19.8 in. (35.5 x 50.2 cm)

Sold at auction

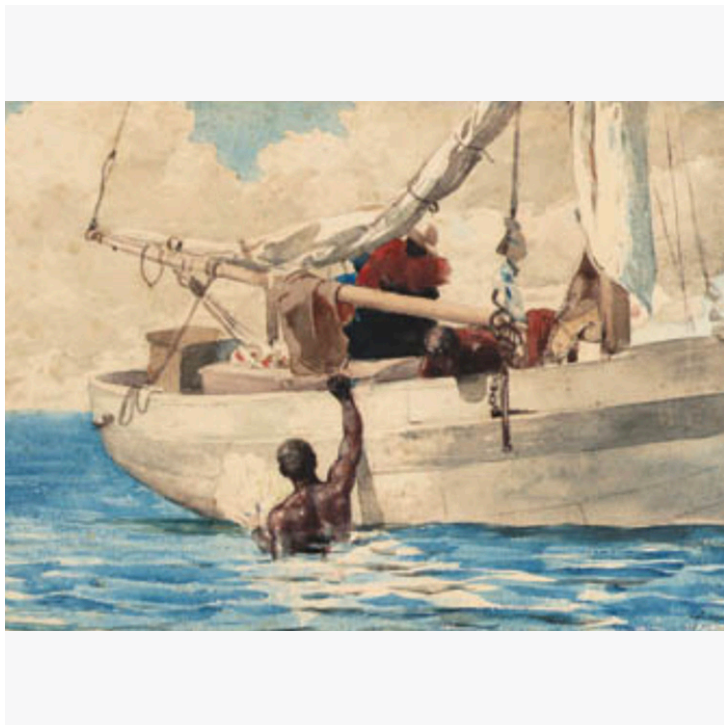
November 2007 for \$4,521,000

Herring Fishing
1894
watercolor
13.8 x 19.5 in. (35 x 49.5 cm)

Sold at auction
November 2007 for \$3,065,000



TOP PAINTINGS SOLD AT AUCTION



The Coral Divers

1885

watercolor

13 x 20.7 in. (33 x 52.5 cm)

Sold at auction

December 1998 for \$2,642,500

*Two Girls and a Boat,
Tynemouth, England*

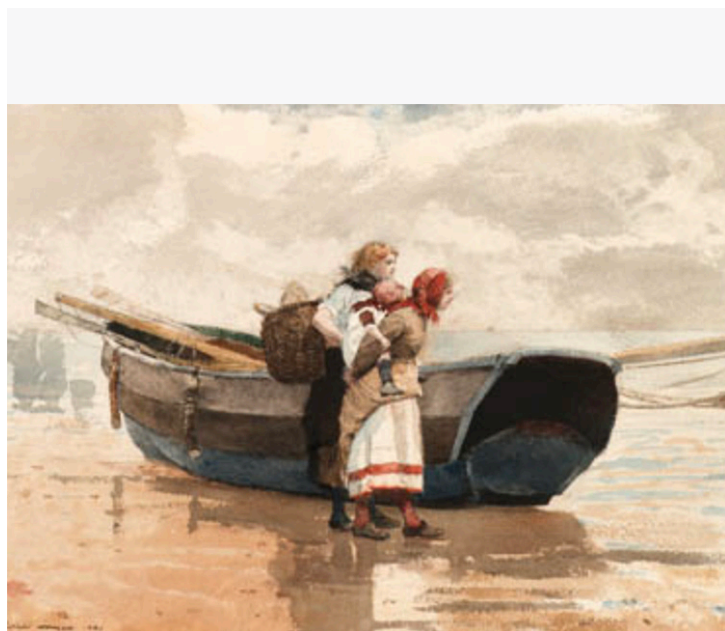
1881

watercolor

13.6 x 20.5 in. (34.5 x 52 cm)

Sold at auction

December 1998 for \$2,532,500



TOP PAINTINGS SOLD AT AUCTION



Portrait of a Lady

1875

watercolor

12 x 8 in. (30.4 x 20.3 cm)

Sold at auction

November 2007 for \$2,169,000

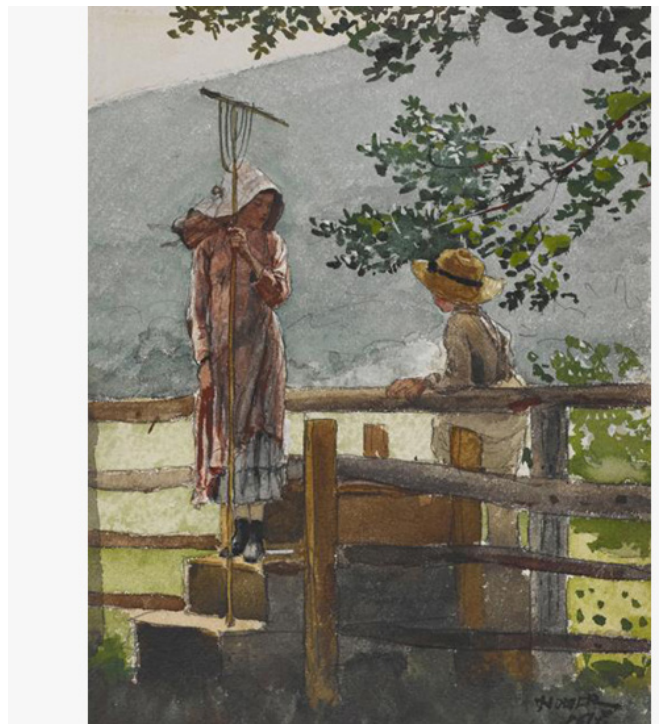
Spring
1878

watercolor and pencil

11.25 x 8.75 in. (28.5 x 22.2 cm)

Sold at auction

December 2004 for \$2,024,000



HOMER PAINTINGS IN MUSEUM COLLECTIONS



**Crystal Bridges Museum of
American Art, Bentonville, AR**

Spring

1878

watercolor and pencil on paper

11.25 x 8.75 in. (28.5 x 22.2 cm)

**Fine Arts Museum
of San Francisco**

A Swell of the Ocean

1883

watercolor over graphite

15.25 x 17.65 in. (38.7 x 44.7 cm)



HOMER PAINTINGS IN MUSEUM COLLECTIONS



**Brooklyn Museum
Brooklyn, NY**

Fresh Air
1878
watercolor
20.1 x 14 in. (51 x 35.5 cm)

Art Institute of Chicago

After the Hurricane, Bahamas
1899
watercolor
14.9 x 21.3 in. (37.8 x 54.1 cm)



“...a hundred little accidental effects of sunshine and shadow that can be reproduced only in the immediate presence of Nature.”

Winslow Homer

HISTORY



Winslow Homer, 1880

One of the most influential and important artists, Winslow Homer was born in Boston in 1836. He is considered one of the greatest of American realists in the 19th century and although he never formally learned or aligned with any of the major movements like the Barbizon School, his influence and recognition is widespread, and his process marked a turn away from the divinely infused works of earlier landscape artists.

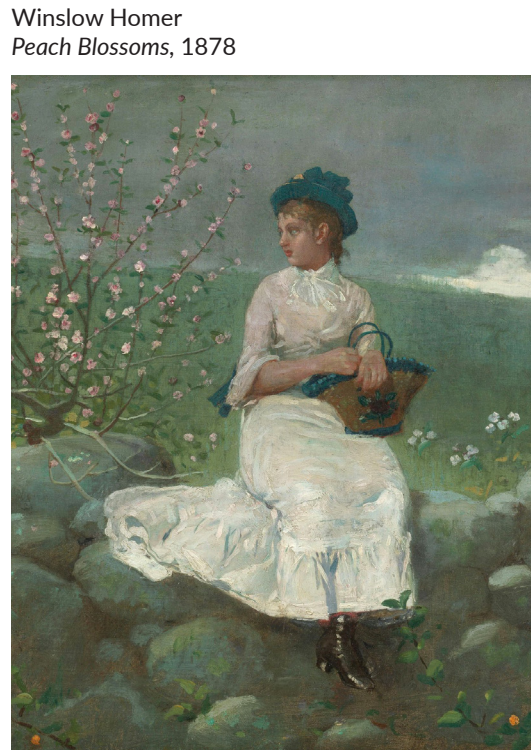
Homer created this work in 1879, a time in which he focused mainly on idyllic landscapes, images of children, and young adults in oils and watercolor. During this period, he became a member of The Tile Club, a group of artists that discussed ideas and organized painting excursions. Other members included William Merritt Chase.

The Shepherdess was a theme he returned to multiple times as it allowed him to depict pastoral landscapes, grounded by young women. While beautiful, we can also sense the work and labor involved in the rural setting, the solitary figure set off by shades of green and dappled spots of reds and oranges. Much like Rembrandt and other Old Master painters, Homer imbues his subject with emotional content and personality.

The 1870s would be a crucial time for Homer as he stepped away from illustration into new experiments in form and medium. Between 1873-1905, Homer created nearly 700 watercolors. Nearly all of his works from the Reconstruction era South are in museum collections, testament to their importance. As Homer himself noted, "You will see, in the future I will live by my watercolors."



Winslow Homer
Crossing the Pasture, 1871-72



Winslow Homer
Peach Blossoms, 1878