

NATHAN OLIVEIRA (1928-2010)

Head #5

from Last Painting Series 14-16

signed on verso "N. Oliveira"

oil on panel

8 x 6 in.

2010

33583

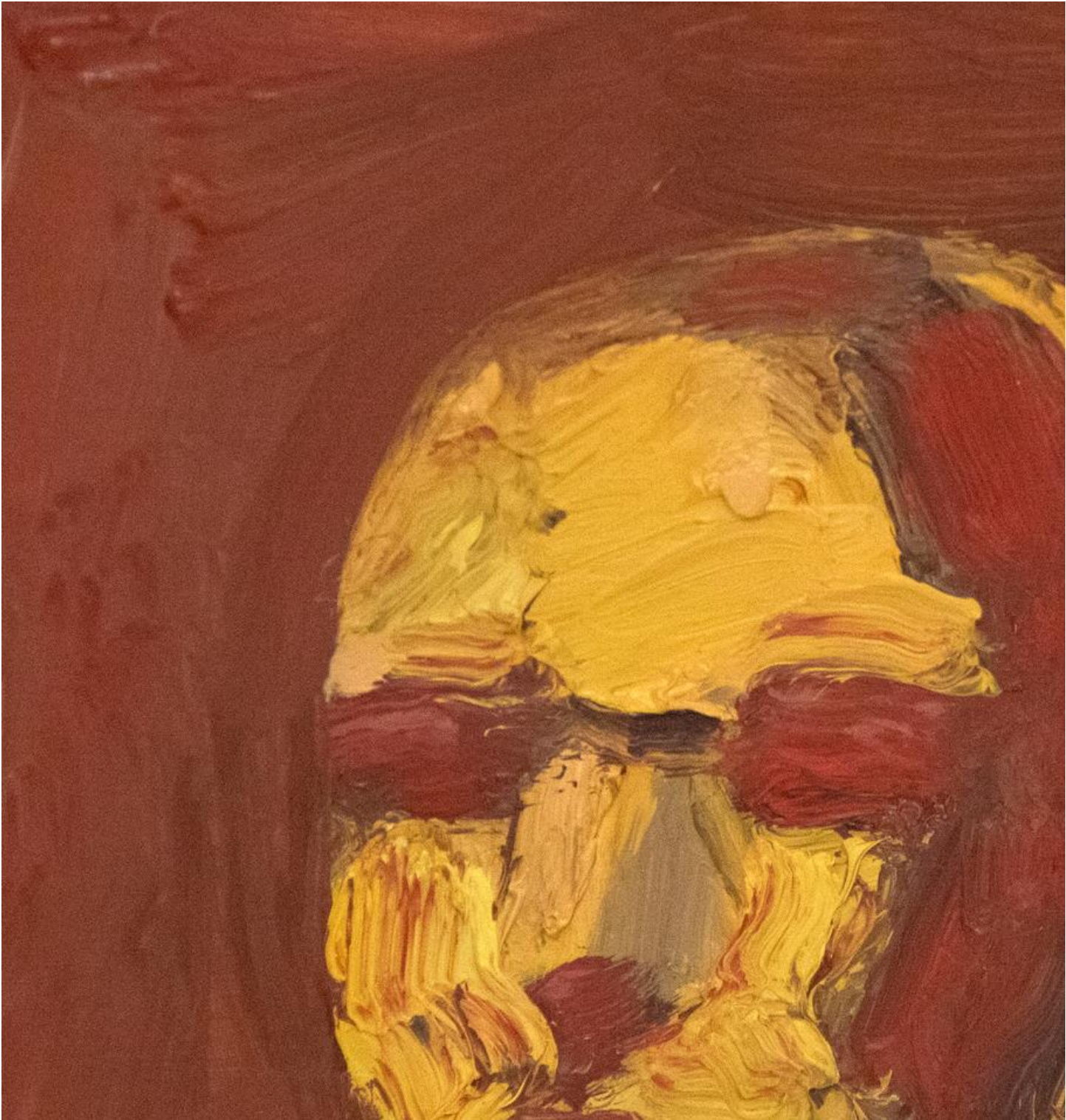
LITERATURE:

Estate of the Artist

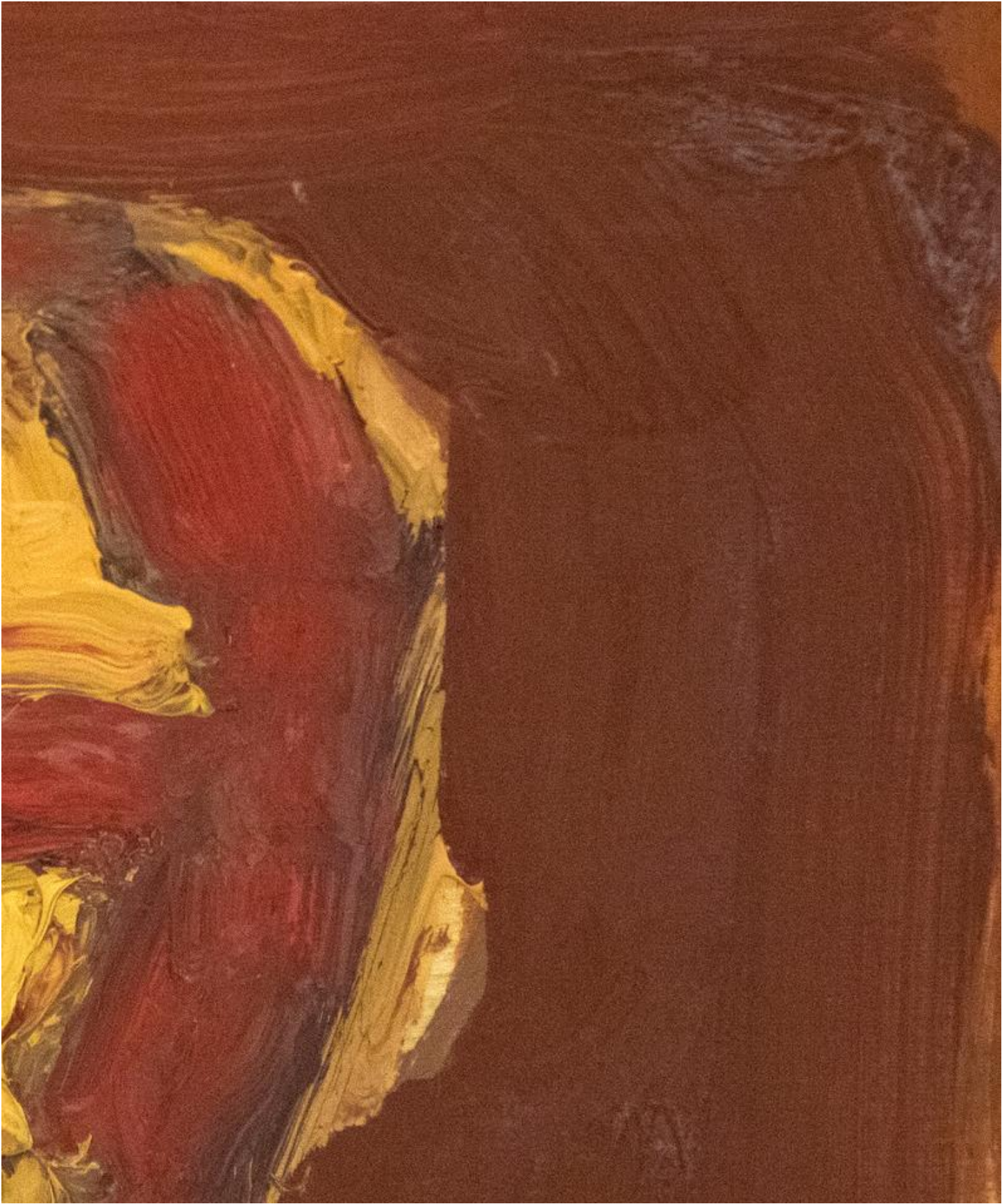
Nathan Oliveira was an American artist and prominent member of the second generation of the Bay Area Figurative artists. Though he worked with a variety of media, subjects, and disciplines over the course of his long career, Oliveira is best remembered for the brilliantly colored figurative and landscape paintings he created while associated with the California movement. "For me, painting is that magical material, that beautiful stuff that was invented, the ground-up pigments in oil which makes it very malleable," he had said. "It can be manipulated and changed, darkened, lightened, given different hues and colors, so that by manipulating this material somehow I can find that figure I'm looking for, that figure that represents all the issues I'm bringing up and addressing." Oliveira's works retain a sense of Expressionist looseness and melancholy, inspired by his interest in the works of Willem de Kooning, Francis Bacon, and Edvard Munch. His work has been met with critical acclaim, receiving numerous honors such as a 1996 Honorary Doctorate of Fine Arts from the San Francisco Art Institute and a major retrospective in 2002, "The Art of Nathan Oliveira," mounted by the San Jose Art Museum. The Windhover Contemplative Center, a structure completed in 2014 at Stanford University, permanently displays four of Oliveira's paintings. Born in Oakland, CA on December 19, 1928, he died on November 13, 2010 in Stanford, CA at the age 81.

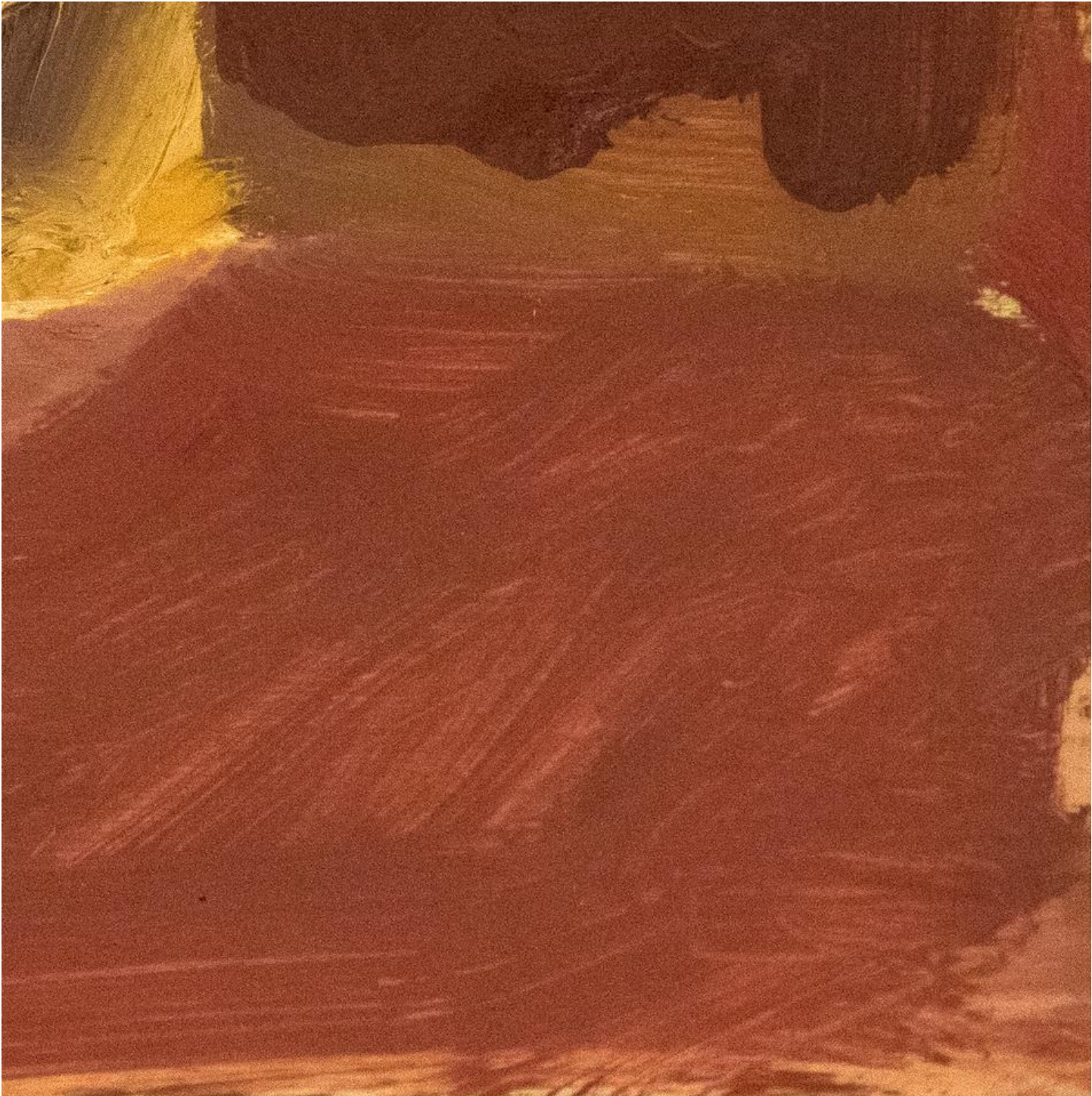
(artnet)

The information and material herein represents Gallery's best efforts and understanding of the current history and scholarship with respect to the provenance of the Work(s) of Art described and is not part of any warranty.











John Ammesley Company
since 1967 TD-CX8
www.johannesley.com
Toll Free 800-471-4448

Head # 5 2010

N. Oliveira

THIN
ARTIST PANEL