

**MAURICE GOLUBOV (1905-1987)**

**City Nocturne**

Signed lower right, "M Golubov"

oil on canvas

32 x 42 in. (32 1/2 x 42 1/2 x 1 in.)

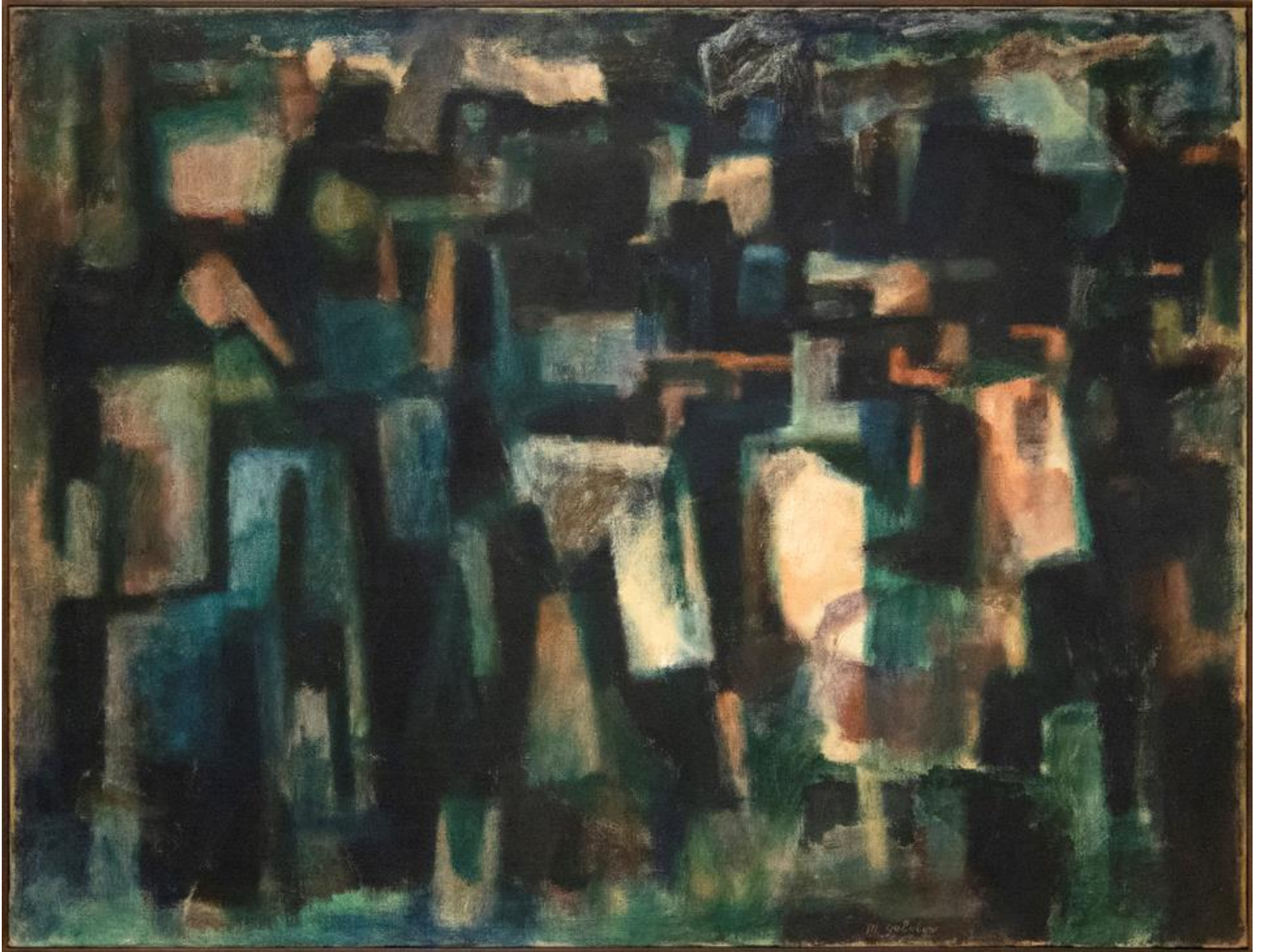
1949

37431

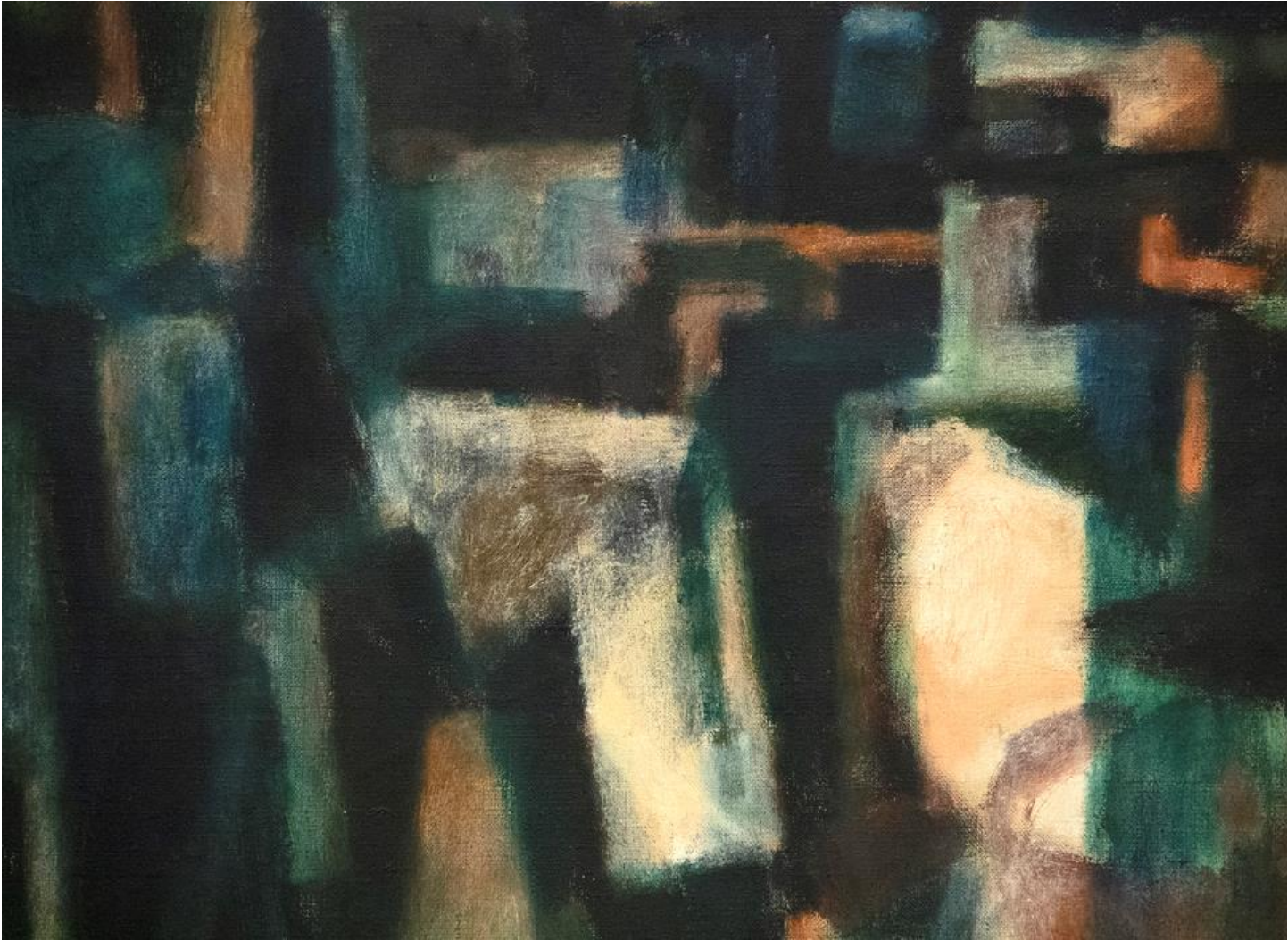
**PROVENANCE:**

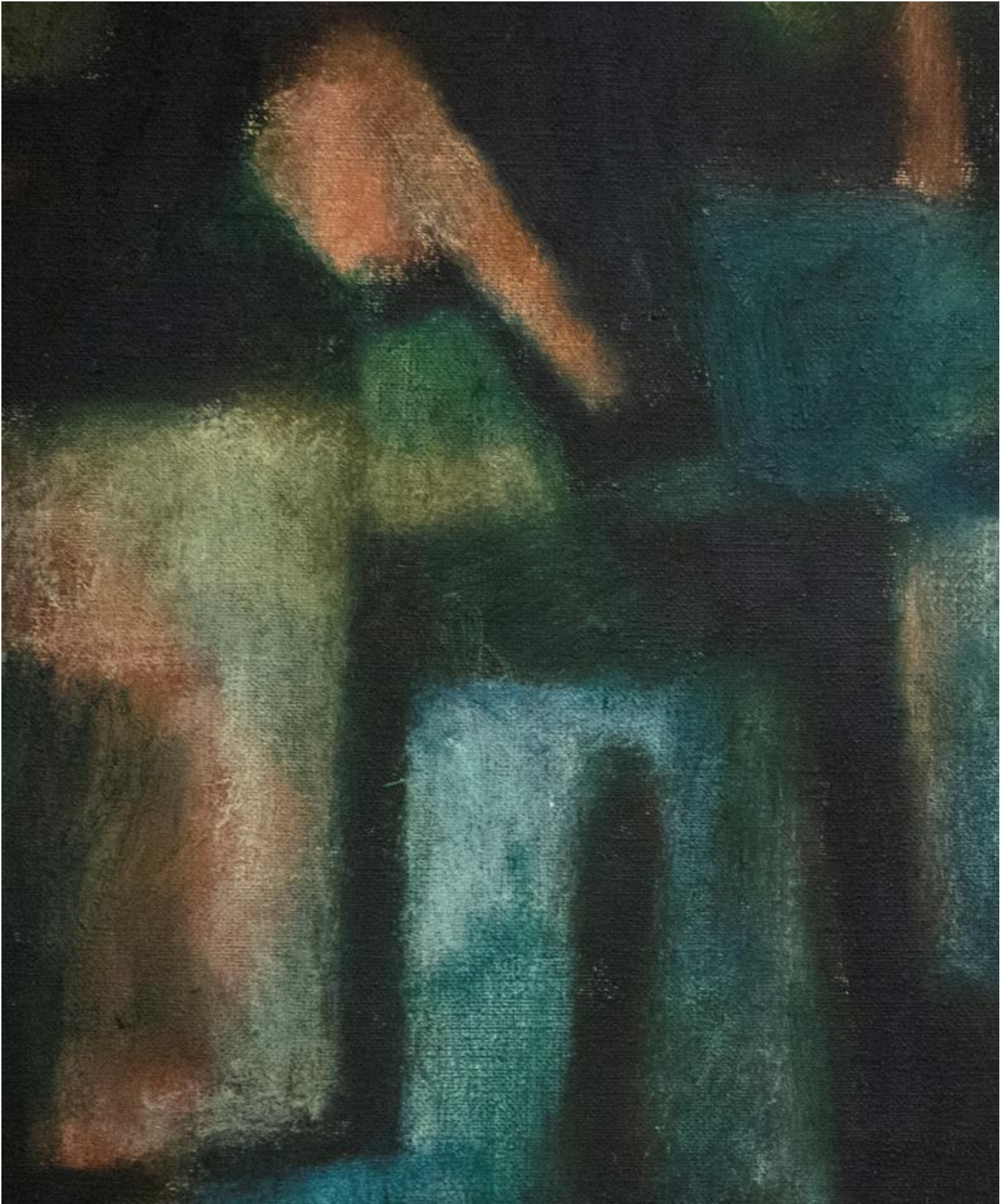
Estate of the Artist

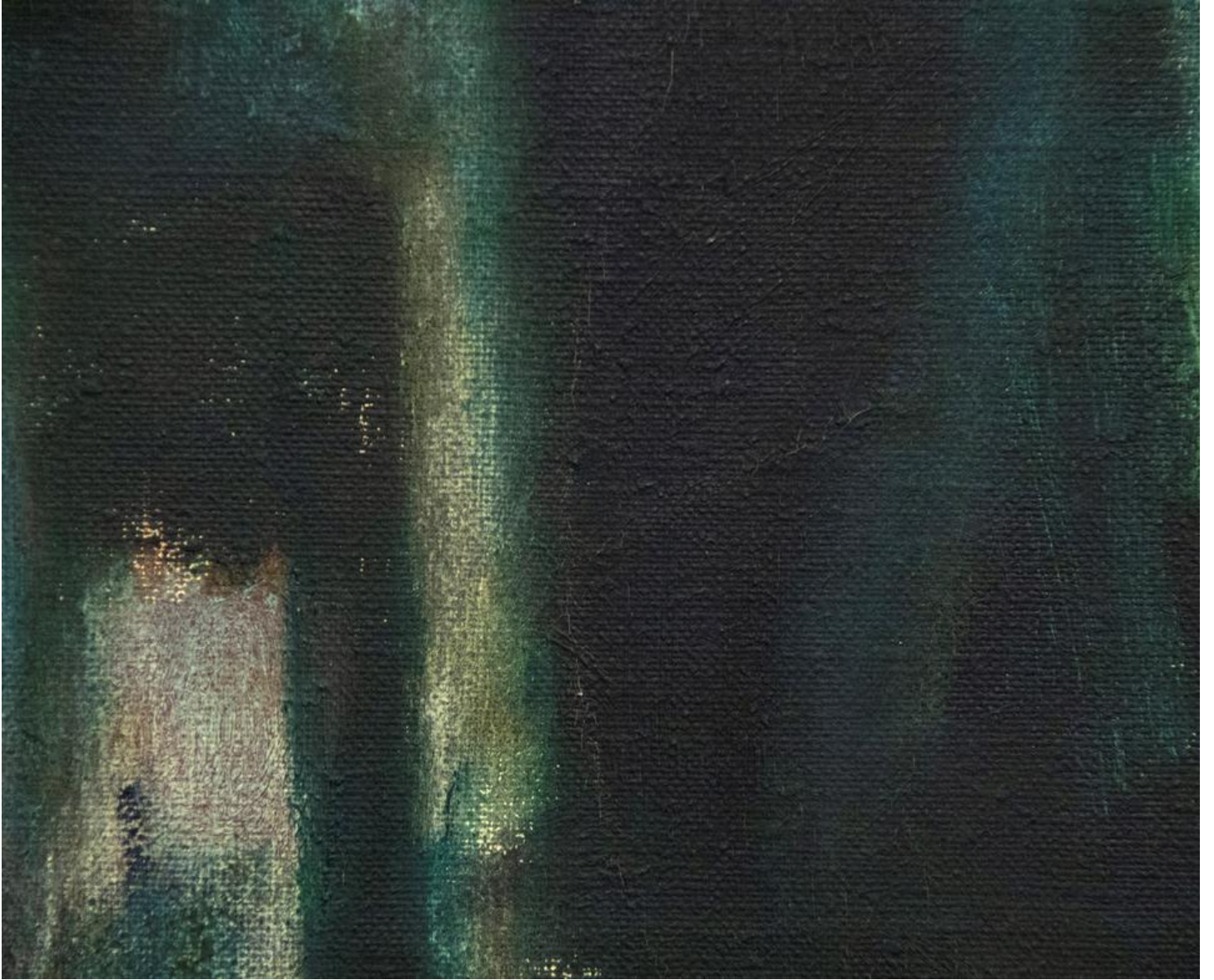
The information and material herein represents Gallery's best efforts and understanding of the current history and scholarship with respect to the provenance of the Work(s) of Art described and is not part of any warranty.



















CITY INDUSTRY

Levin Fine Art  
1000 Broadway  
New York, NY 10003  
Tel: 212 675 1234  
Fax: 212 675 1234  
www.levinfineart.com

446

Levin Fine Art  
1000 Broadway  
New York, NY 10003  
Tel: 212 675 1234  
Fax: 212 675 1234  
www.levinfineart.com

446 Ocean Ave  
450 Rxx 311

446 Ocean Ave

Maurice Golubov, (1905-1987)

City Nocturne, 1949

Oil on canvas

32 x 42 inches (81.28 x 106.68 cm)

INV # GOLU\_M\_007

Jim@levisfineart.com • 646-620-5000  
514 West 24th Street • New York, NY 10011

LG 9196

1949

LEVIS FINE ART  
SAC