



## **ELAINE DE KOONING (1918-1989)**

**Bill Brown**

Sigend verso, " 20 x 32 ELAINE"

oil on canvas

32 1/8 x 20 in. (34 1/2 x 22 x 2 in.)

1954

38842

### **PROVENANCE:**

Hacket-Freedman Gallery, San Francisco

with Childs Gallery, Boston

Private Collection, Kansas, 2019

### **EXHIBITION:**

1999 Elaine de Kooning Portraits, Salander-O'Reilly Galleries, New York, New York

2003 Elaine de Kooning, Hackett Freedman Gallery, San Francisco, California

Elaine de Kooning, the wife of Willem de Kooning was a prolific and versatile painter, writer, and teacher. Although she was a major figure in both the Abstract Expressionist and American Figurative Expressionist movements of the 1940s and 1950s, de Kooning eschewed developing a singular style and instead painted in a range of modes from realism to abstraction. "Style is something I've always tried to avoid. I'm more interested in character," she said. Her paintings feature loose, thick brushstrokes in bold hues executed in an energetic, improvisational mode. "A painting to me is primarily a verb, not a noun," she famously declared, "an event first and only secondarily an image."

Highly noted for her skill as a portraitist, she often painted friends and contemporary figures, notably including a commission to paint President John F. Kennedy. Born on March 12, 1918 in Brooklyn, NY, she went on to study at Hunter College and the American Artists School. De Kooning quickly gained prominence in the burgeoning art scene, becoming a member of the infamous Eighth Street Club alongside Franz Kline, Clyfford Still, and Hans Hofmann, solidifying her place within the canon of American Expressionism. She is regarded as being instrumental in developing contemporary American art, shaping young artists through several teaching positions held at influential institutions like the University of Pennsylvania and Yale University. De Kooning died on February 1, 1989 in Southampton, NY.

The information and material herein represents Gallery's best efforts and understanding of the current history and scholarship with respect to the provenance of the Work(s) of Art described and is not part of any warranty.





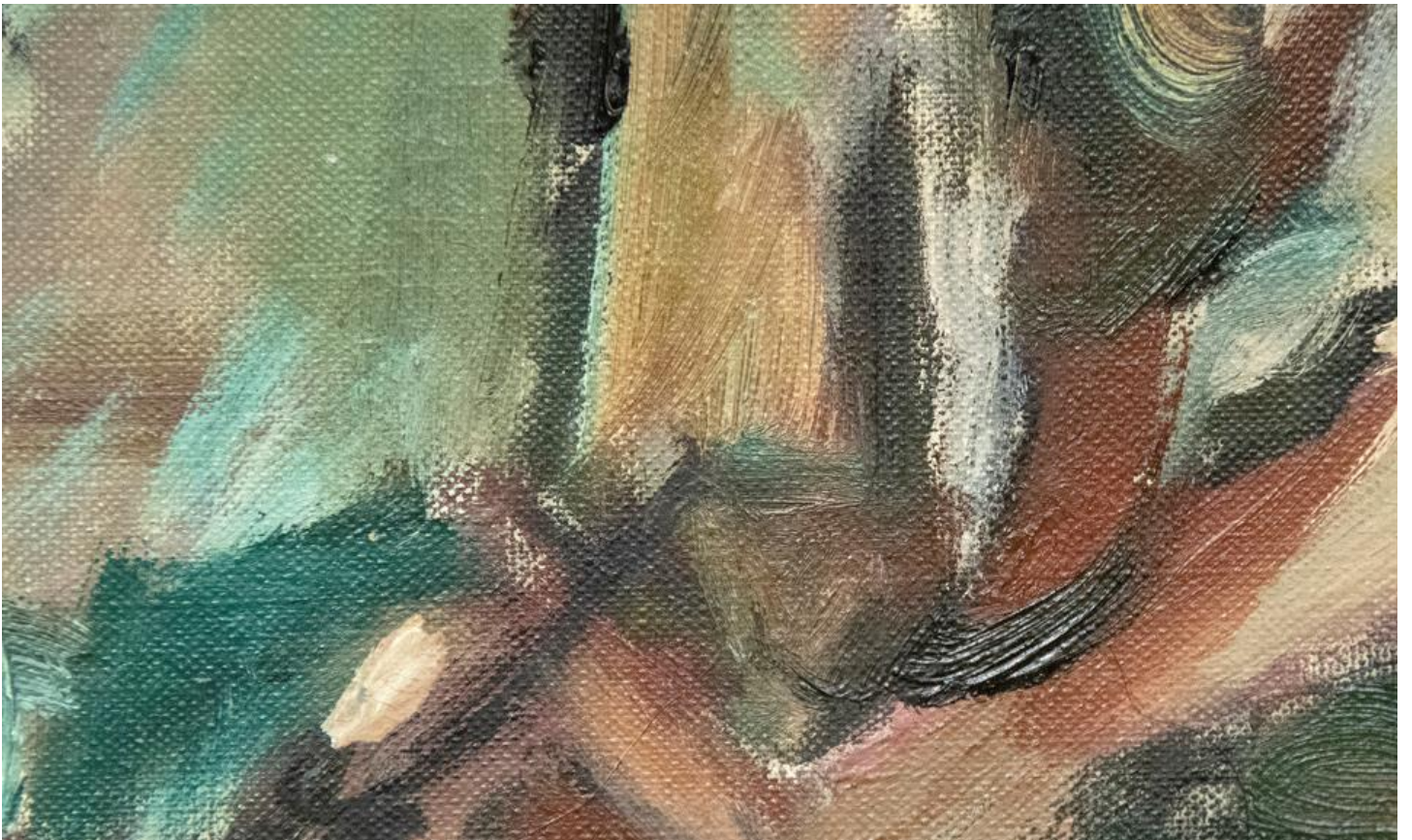






























Integrative-ITPhilly (Gardner, 2010).  
 22 East 19th Street, New York, NY 10003-  
 0770, USA  
 212.693.4000

