



**PAUL GRIMM (1891-1974)**

**Stately Eucalypti**

Signed lower left, "Paul Grimm"

oil on board

20 x 24 in. (27 x 31 x 1 3/8 in.)

50.8 x 60.96 cm (68.58 x 78.74 x 3.49 cm)

38939

**PROVENANCE:**

with George Stern Fine Arts  
Private Collection, Ohio

Paul Grimm (1891-1974) was an artist born to German parents in South Africa in 1891. As a small child, he moved with his parents to the United States. He reportedly was seen as having artistic talent as a child and, as an adult, attended a university-level art school in New York. Between 1910 and 1920, he reportedly went to South America for a few years before returning stateside and settling in southern California.

Grimm gained much of his present-day fame by painting landscapes of southern California in the 1920s. Many works depict alluvial fans and desert vegetation in the eastern half of Riverside County. The San Jacinto Mountains appear frequently in his work. Most of the works are oil on canvas. A residence on Calle Palo Fierro in the Palm Springs Warm Sands Neighborhood was built for him in 1935. He had a studio on Palm Canyon Drive in Palm Springs from the 1950s until his death in 1974.

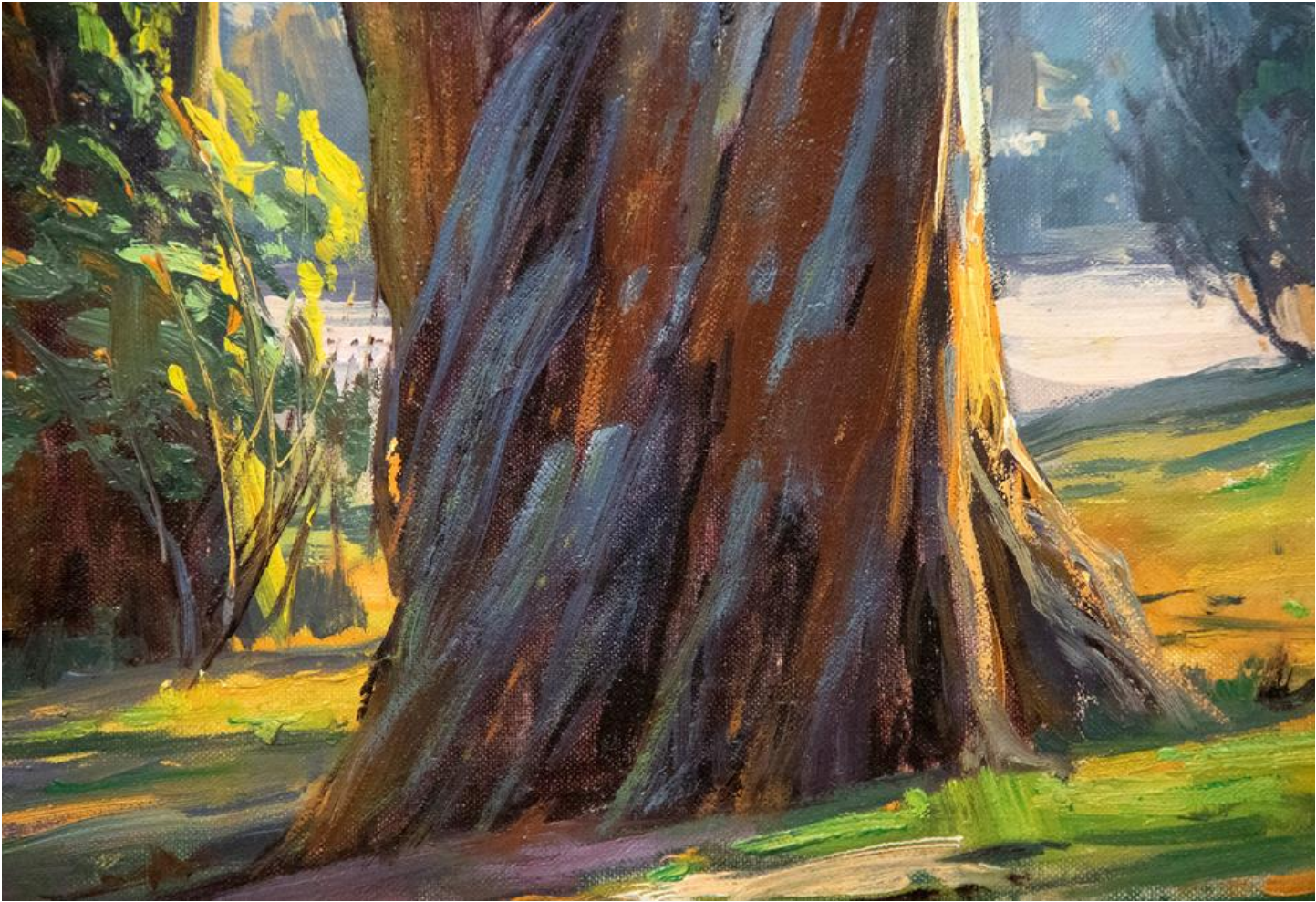
The information and material herein represents Gallery's best efforts and understanding of the current history and scholarship with respect to the provenance of the Work(s) of Art described and is not part of any warranty.













STATELY EUCALYPTI

20x24 - PAUL GRIMM - 1939

GSFA-PC- 1134

GEORGE STEIN FINE ARTS  
1000 10th Avenue, New York, N.Y. 10018  
Tel. (212) 691-1100  
PAUL GRIMM  
1893-1974  
"Stately Eucalypti"  
Oil on board 20x24  
100% 41134

PAUL GRIMM  
1893-1974  
"Stately Eucalypti"  
Oil on board 20x24  
100% 41134