



**WILLIAM WENDT (1865-1946)****Laguna Hills**

Signed lower right, "William WEDNT"

oil on canvas

25 x 30 in. (35 3/4 x 40 3/4 x 2 1/2 in.)

38960

**PROVENANCE:**

with DeRu's Fine Art  
Private Collection, Ohio

William Wendt was born in Bentzen, Germany, and immigrated to Chicago in 1880. Although he took classes for a short time at the Art Institute of Chicago, he was a largely self-taught painter with a religious reverence for nature. Wendt co-founded the California Art Club in 1911, and within a year he was elected to the National Academy of Design and built his home and studio in Laguna Beach.

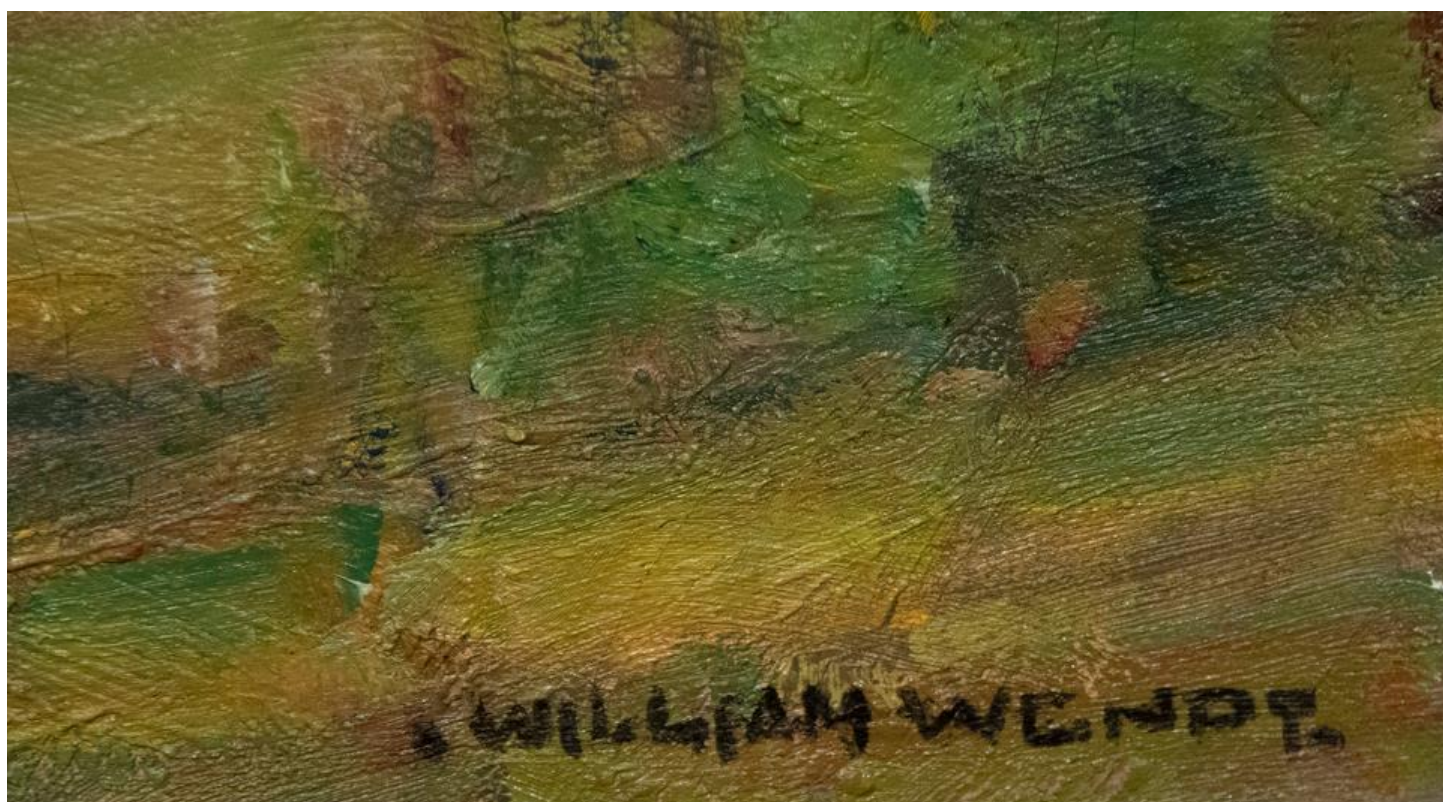
Often referred to as the "dean of Southern California artists," he became known for his ability to scout locations for ideal, naturally occurring compositions. His earlier, Edenic landscapes exude the hallmark lightness of traditional Impressionism, but he distinguished his work with bolder, block-style pastoral compositions with muted colors.

The masculine quality had an influential effect on the style of paintings in the American West. "Wendt's canvases grew in strength and boldness over his forty years of painting," Nancy Moure wrote in her comprehensive book, *California Art: 450 Years of Painting & Other Media* (Dustin Publishing, 1998). "He soon began to 'draw' with his brush, to carve out the underlying structure of the mountains, delighting in the folds of the earth."

The information and material herein represents Gallery's best efforts and understanding of the current history and scholarship with respect to the provenance of the Work(s) of Art described and is not part of any warranty.































 **D&W**  
FINE ARTS

1000 South Main Street, Suite 100, Portland, ME 04101

July 25, 2019

THE ARTIST'S PROPERTY  
THE ARTIST'S PROPERTY  
THE ARTIST'S PROPERTY

WILLIAM WENDE (1845-1916)  
Landscape  
Oil on Canvas  
100 x 100 cm (39 3/8 x 39 3/8 in.)

Although the painting is damaged by numerous insect holes, the artist's skill and palette have been preserved. The painting is a fine example of the artist's work. It is a rare opportunity to see this painting in person. It is a rare opportunity to see this painting in person. It is a rare opportunity to see this painting in person.

*William Wendt*  
D&W FINE ARTS



WILLIAM WENDE  
1845-1916  
Landscape  
Oil on Canvas  
100 x 100 cm (39 3/8 x 39 3/8 in.)  
2019

This oil painting was created  
approximately 1880 and is  
an early work by the artist.  
It is a rare opportunity to see this painting in person.  
It is a rare opportunity to see this painting in person.  
It is a rare opportunity to see this painting in person.