



10/10

Chuck Close

2011

CHUCK CLOSE (1940-2021)

Kate

#16

Signed in pencil, lower middle, "Chuck Close"

archival pigment print

32 x 24 in. (36 3/4 x 28 5/8 x 2 in.)

81.28 x 60.96 cm (93.35 x 72.71 x 5.08 cm)

10/10

2011

46088

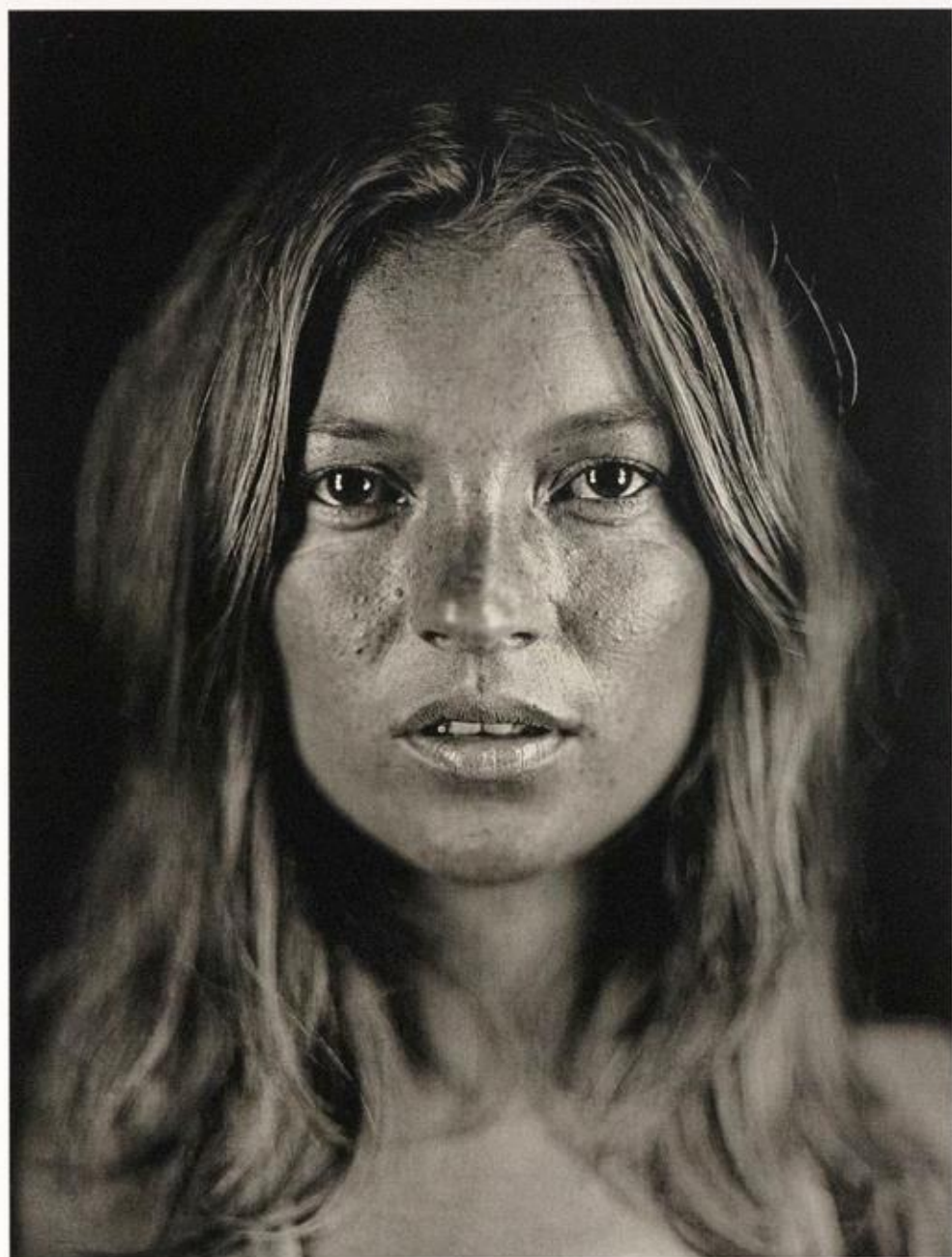
PROVENANCE:

Adamson Editions, Washington, DC

Private Collection, California, acquired from the above, 2016

Chuck Close is an American painter and photographer who achieved fame as a photorealist, through his massive-scale portraits. Though a catastrophic spinal artery collapse in 1988 left him severely paralyzed, he has continued to paint and produce work that remains sought after by museums and collectors. Throughout his career, Close has endeavored to expand his contribution to portraiture through the mastery of such varied drawing and painting techniques as ink, graphite, pastel, watercolor, conte crayon, finger painting, and stamp-pad ink on paper; printmaking techniques, such as Mezzotint, etching, woodcuts, linocuts, and silkscreens; as well as handmade paper collage, Polaroid photographs, Daguerreotypes, and Jacquard tapestries. His early airbrush techniques inspired the development of the ink jet printer. Working from a gridded photograph, Close builds his images by applying one careful stroke after another in multi-colors or grayscale. He works methodically, starting his loose but regular grid from the left hand corner of the canvas. His works are generally larger than life and highly focused. Close has been a printmaker throughout his career, with most of his prints published by Pace Editions, New York. He made his first serious foray into print making in 1972, when he moved himself and family to San Francisco to work on a mezzotint at Crown Point Press for a three-month residency. In 1986 he went to Kyoto to work with Tadashi Toda, a highly respected woodblock printer. In 1995, curator Colin Westerbeck used a grant from the Lannan Foundation to bring Close together with Grant Romer, director of conservation at the George Eastman House. The artist has also continued to explore difficult photographic processes such as daguerreotype in collaboration with Jerry Spagnoli and sophisticated modular/cell-based forms such as tapestry. Close's photogravure portrait of artist Robert Rauschenberg, "Robert" (1998), appeared in a 2009 exhibition at the Heckscher Museum of Art in Huntington, New York, featuring prints from Universal Limited Art Editions. In the daguerreotype photographs, the background defines the limit of the image plane as well as the outline of the subject, with the inky pitch-black setting off the light, reflective quality of the subject's face. Close's wall-size tapestry portraits, in which each image is composed of thousands of combinations of woven colored thread, depict subjects including Kate Moss, Cindy Sherman, Lorna Simpson, Lucas Samaras, Philip Glass, and Close himself.

The information and material herein represents Gallery's best efforts and understanding of the current history and scholarship with respect to the provenance of the Work(s) of Art described and is not part of any warranty.




10/10

Mark Choe

2011

Chuck Close



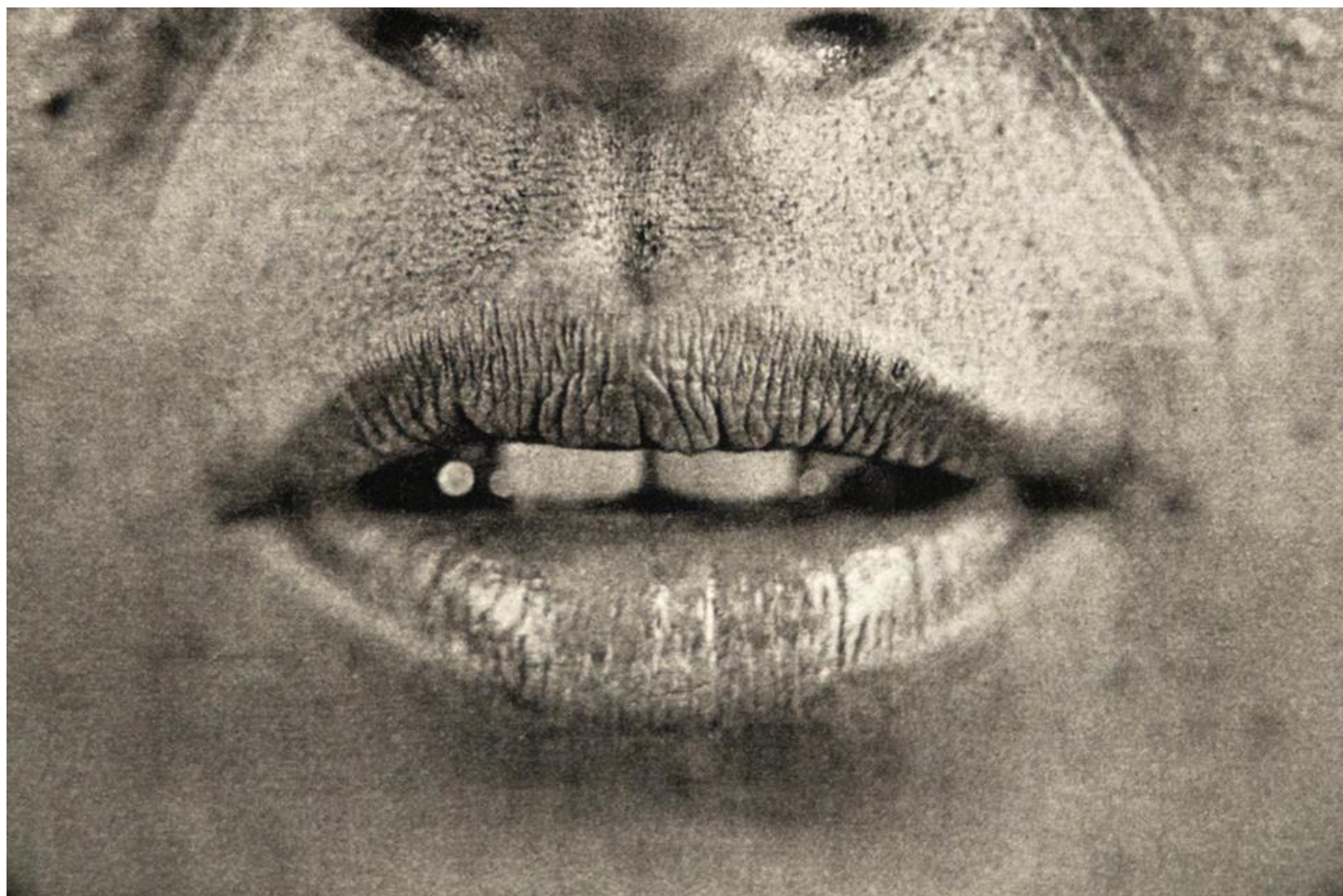
10/10



2011









ADAMSON EDITIONS
418 Union Street / June 81 / June 18, 2018

Adamson Editions
418 Union Street
San Francisco, CA 94111
November 28, 2023

Dear Adam,

Upon Kelly Padden's request, I have prepared a certificate of authenticity for your Chuck Close print, edition 8/10.

Please inform me if there are any additional requirements or if you need any further assistance.

Kind regards,

Laure Adamson

Laure Adamson



Small text or label below the logo in the bottom left corner.

Official Adamson Editions
Printed on 100% cotton paper

100% cotton paper