



EDGAR ALWIN PAYNE (1883-1947)

Sierra Nevada Mountains

Signed lower left, 'Edgar Payne"

oil on canvas

9 3/4 x 13 1/2 in. (19 1/2 x 23 x 2 7/8 in.)

24.77 x 34.29 cm (49.53 x 58.42 x 7.3 cm)

c. 1930

48116

PROVENANCE:

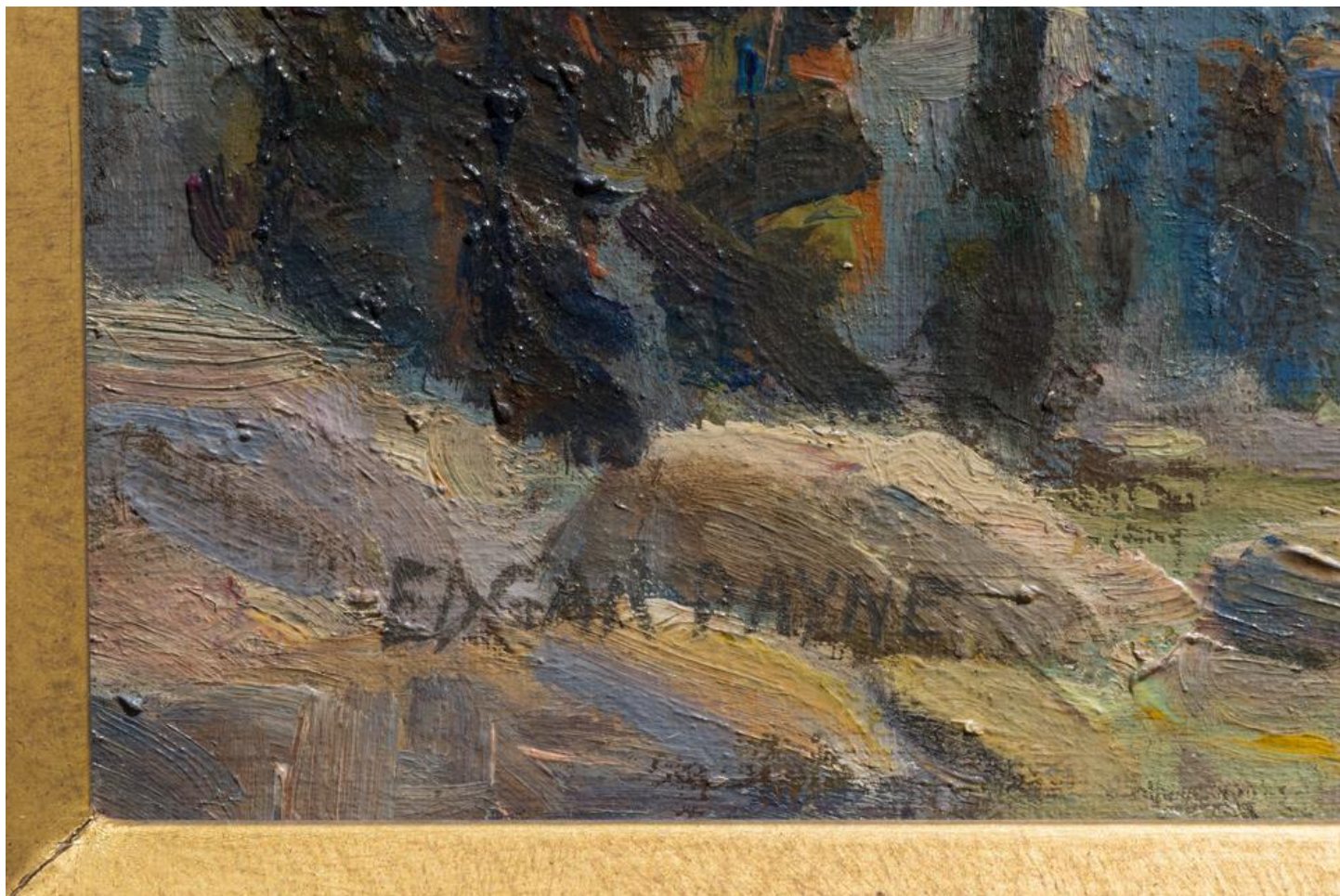
Heritage Auctions Texas, December 6, 2007, lot 23360

Private Collection, acquired from above, 2007

American Impressionist painter Edgar Payne grew up in Missouri, but spent the most productive part of his career captivated by the majestic scenery of the West. Primarily self taught, he did study briefly at the Art Institute of Chicago and began his career designing and painting scenery for the stage and murals for homes and theaters. Crisscrossing the United States, Mexico, Canada and Europe, the American West appealed most. Lured by the quality of light and freedom to paint open spaces and possessing a reverence for nature, he especially loved the mountains and frequently took packhorses into the Sierra Nevada Mountain Range to paint and sketch the upper lakes. Recognized as one of California's leading landscape artists, Payne earned the respect of his peers and critics for his Impressionistic landscapes painted in plein-air. His works are in the permanent collections of the Laguna Art Museum, Chicago Art Museum, Southwest Museum of Los Angeles, Pasadena Art Institute, and the National Academy of Design.

The information and material herein represents Gallery's best efforts and understanding of the current history and scholarship with respect to the provenance of the Work(s) of Art described and is not part of any warranty.



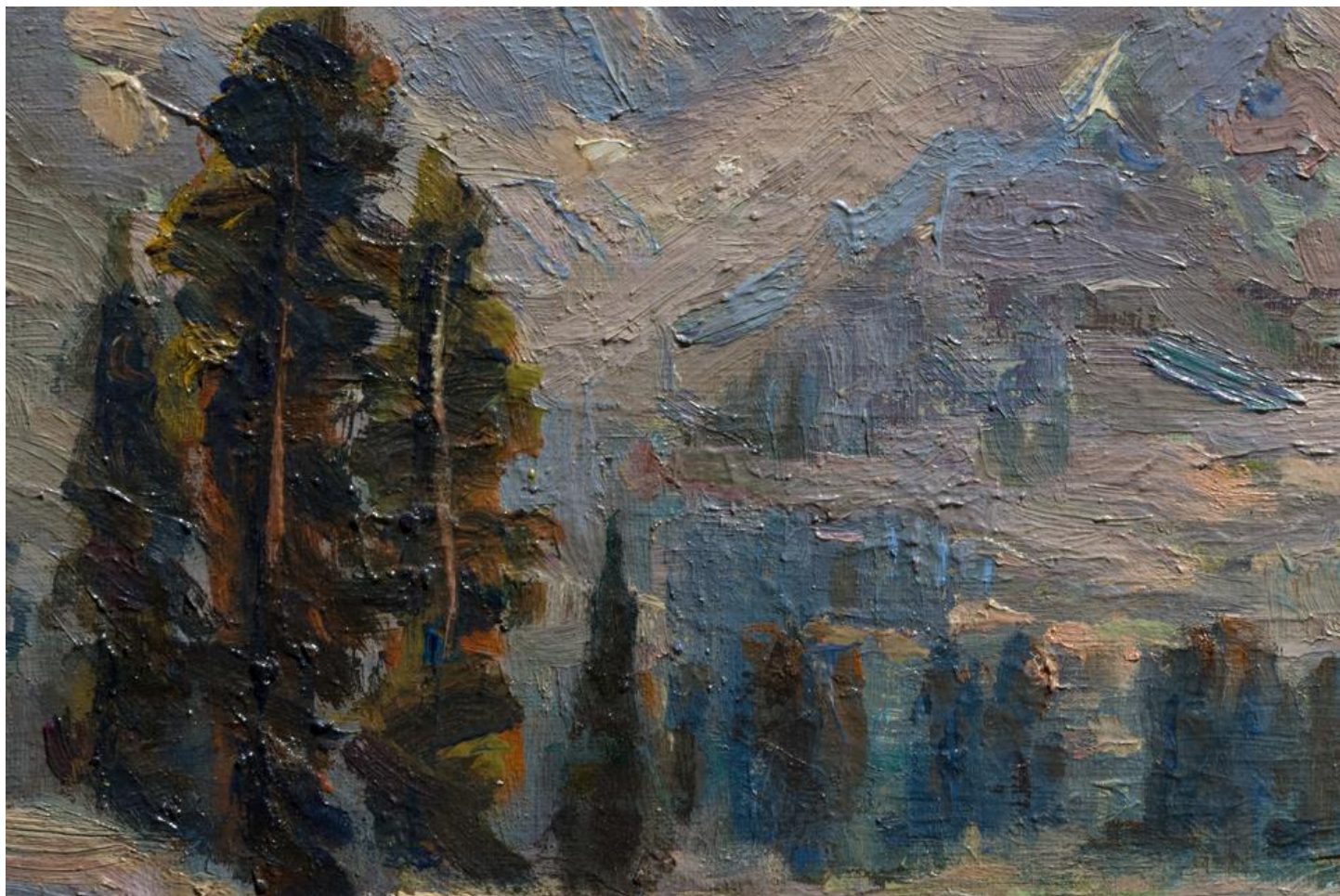


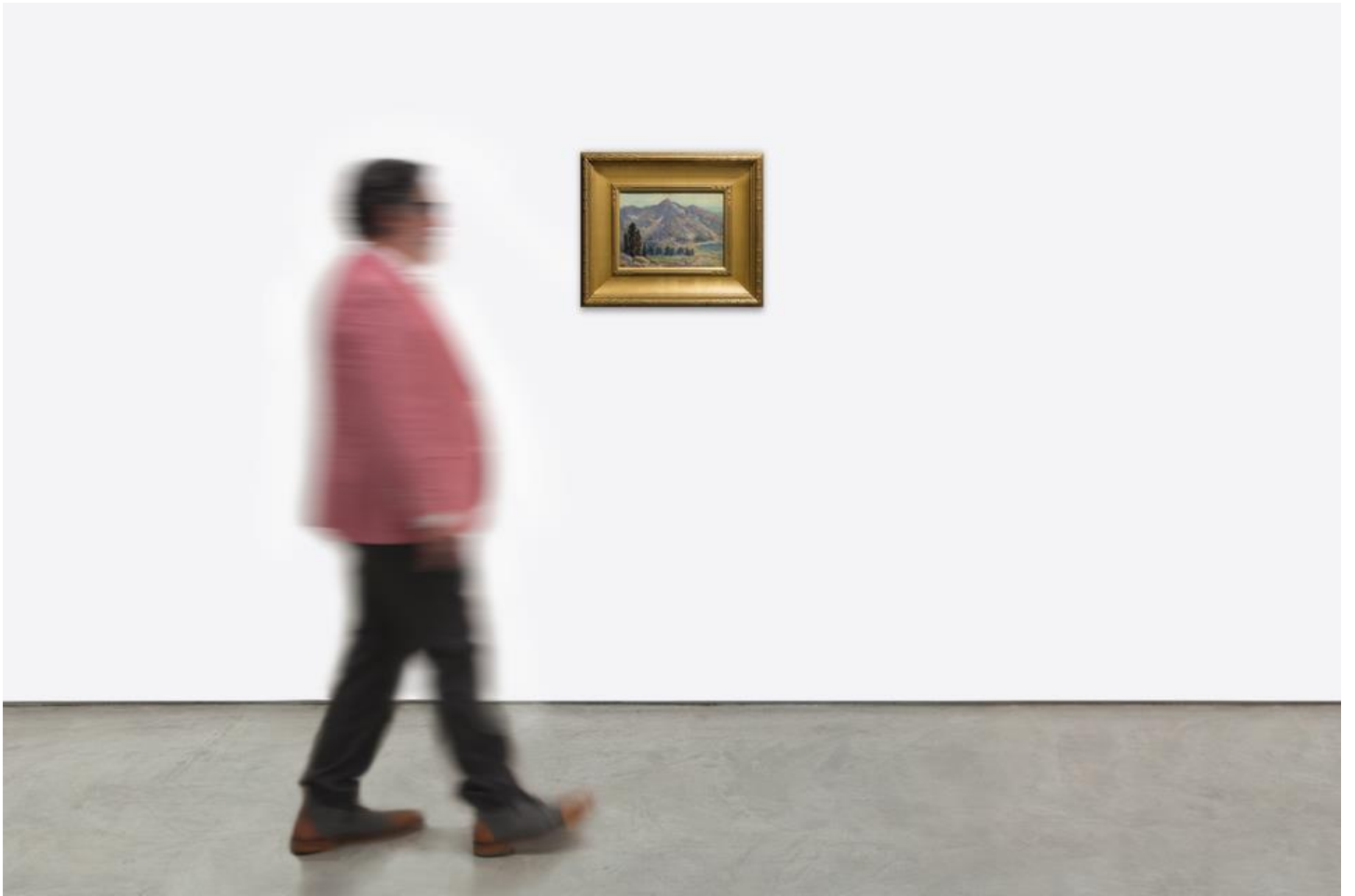














R.D. FRAMES
BILLINGS, MT
406-259-8598

NON