



**EDGAR ALWIN PAYNE (1883-1947)**

**Peaks of St. Gervais**

**(Rhône-Alps, France)**

Signed lower right, "Edgar Payne"

oil on canvas

28 x 34 in. (37 1/2 x 43 1/2 x 3 in.)

c. 1945

7251.b

**PROVENANCE:**

Private Collection, California

Peaks of St. Gervais is one of the artist's classic landscapes, with his distinctive swift brushstroke and charming town and structures — half of which he rendered in the shade — dwarfed by the snow-capped mountain. In most of his paintings, Payne used structures and figures not as subject, but to communicate the dramatic scale of mountain landscape. Drawn to the mountains of Europe, Payne trekked and painted the Swiss Alps, the colorful harbors of Brittany and France, and the sailing vessels in Italy.

American Impressionist painter Edgar Payne grew up in Missouri, but spent the most productive part of his career captivated by the majestic scenery of the West. Primarily self taught, he did study briefly at the Art Institute of Chicago and began his career designing and painting scenery for the stage and murals for homes and theaters. Crisscrossing the United States, Mexico, Canada and Europe, the American West appealed most. Lured by the quality of light and freedom to paint open spaces and possessing a reverence for nature, he especially loved the mountains and frequently took packhorses into the Sierra Nevada Mountain Range to paint and sketch the upper lakes. Recognized as one of California's leading landscape artists, Payne earned the respect of his peers and critics for his Impressionistic landscapes painted in plein-air. His works are in the permanent collections of the Laguna Art Museum, Chicago Art Museum, Southwest Museum of Los Angeles, Pasadena Art Institute, and the National Academy of Design.

The information and material herein represents Gallery's best efforts and understanding of the current history and scholarship with respect to the provenance of the Work(s) of Art described and is not part of any warranty.

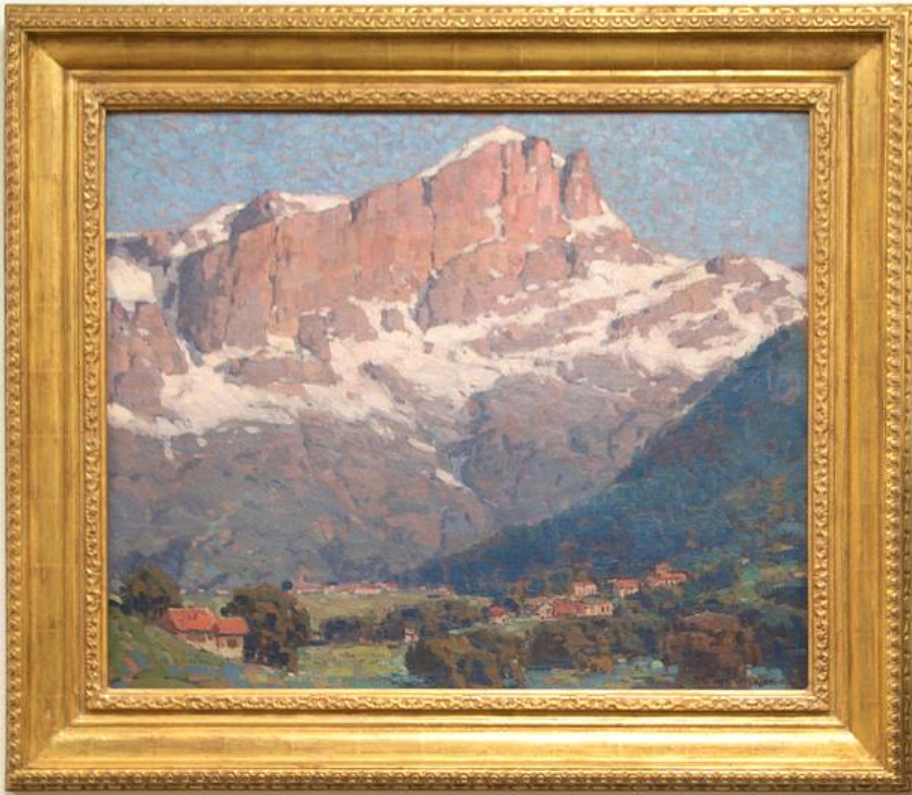














Reddish-brown label

GLASS FRONT  
2000-1000  
"Holes of St. George"  
801 on Canvas - 2000

When this painting was exhibited, it was  
found to be a very valuable one, and  
it was found to be a very valuable one.  
It was found to be a very valuable one.  
It was found to be a very valuable one.

Small label at the bottom center of the frame



EDGAR PAYNE  
1883-1947  
"Peaks of St. Gervais"  
Oil on Canvas 28x34

This Oil Painting was cleaned, treated  
using a Thermo-Pneumatic Wax Lining  
Process and finished with an  
Acrylic Ester Resin Varnish.  
Do not place in direct sunlight.

