



**MAURICE ASKENAZY (1888-1961)**

**Nude with a Japanese Folding Screen**

Signed lower left, "M Askenazy"

oil on canvas

40 x 32 in. (44 1/2 x 36 5/8 x 1 3/8 in.)

101.6 x 81.28 cm (113.03 x 93.03 x 3.49 cm)

c. 1935

7790

**PROVENANCE:**

Ms. Alma Lasher, Beverly Hills, California  
The Estate of Alma Lasher, inherited from above

**EXHIBITION:**

Laguna Beach Art Association Membership Exhibition  
West Palm Beach, Florida, Ann Norton Sculpture Gardens, *Figurative Masters of the Americas*, January 4 – February 12, 2023

"Interior" is one of Maurice Askenazy's more modern compositions, calling to mind the work of Bonnard or Vuillard. The intimate scene shows a nude female model, dramatically seen in profile, posing for a painter in a sun-drenched studio. The door to the room is open, giving the impression that the viewer is stealing a glimpse of a private interaction between artist and model. A cleverly placed mirror on the back of the open door reveals the reflection of the painter, who we are meant to take as Askenazy himself, at work. Askenazy takes great care to depict the details of the room, from the patterned ottoman to the framed paintings on the walls, each a mosaic of Impressionistic color.

Born Mischa Askenazy, the artist immigrated with his family to the United States from Russia as a young boy. He grew up in New York City and studied at the National Academy of Design before travelling to Europe on a scholarship. Upon his return to America he settled in Los Angeles and gained critical acclaim as a painter of society portraits.

The information and material herein represents Gallery's best efforts and understanding of the current history and scholarship with respect to the provenance of the Work(s) of Art described and is not part of any warranty.

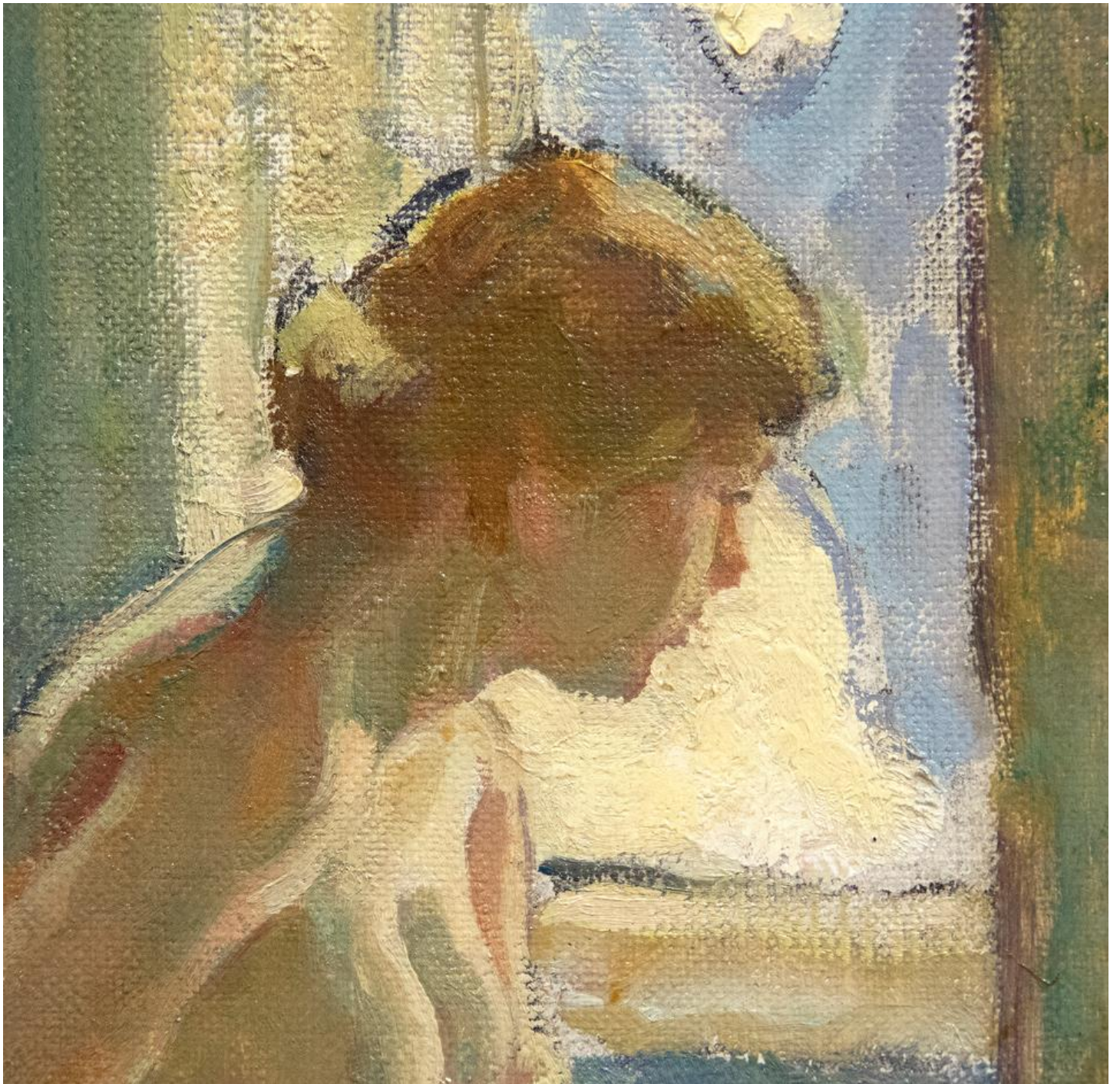








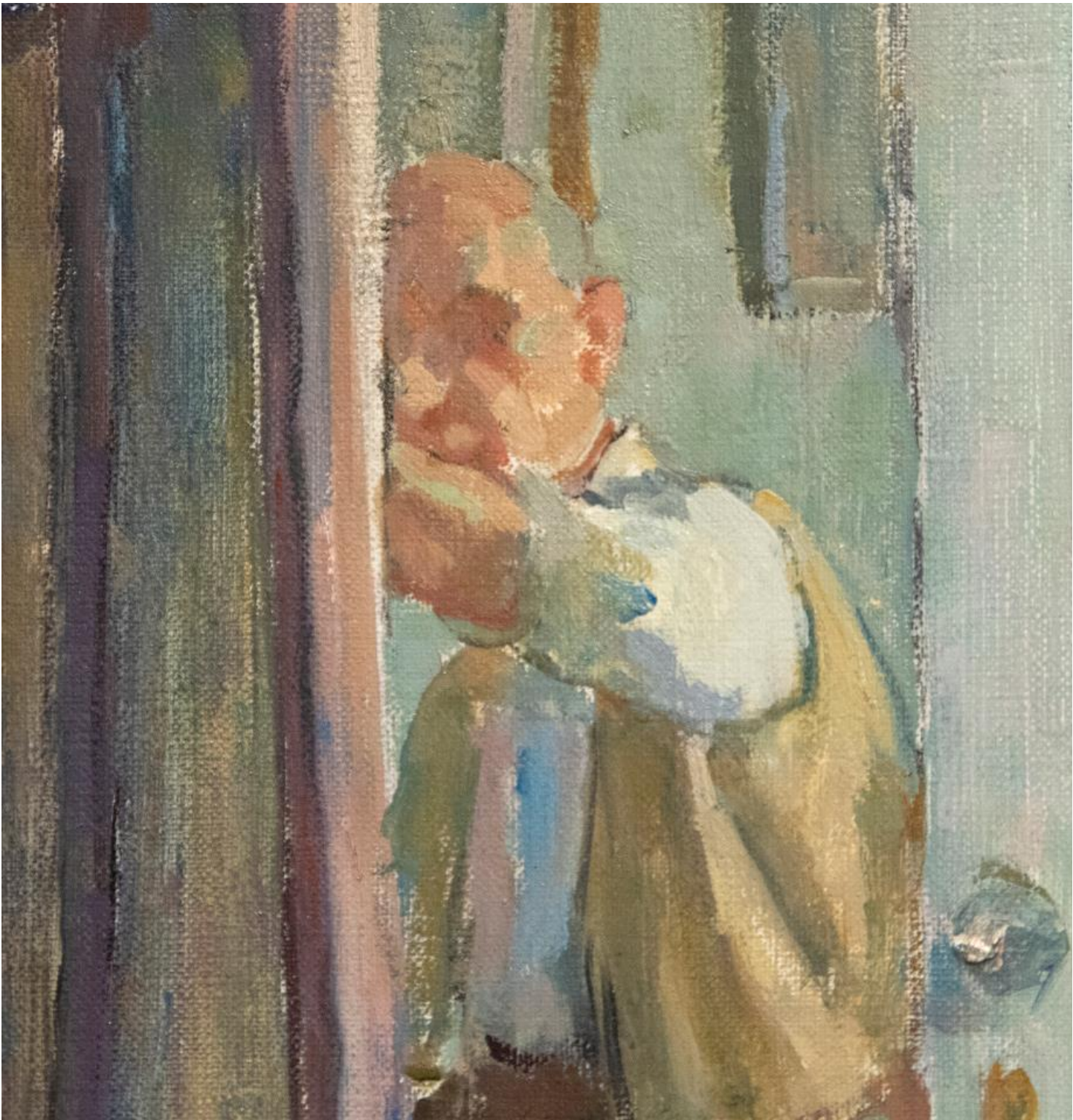






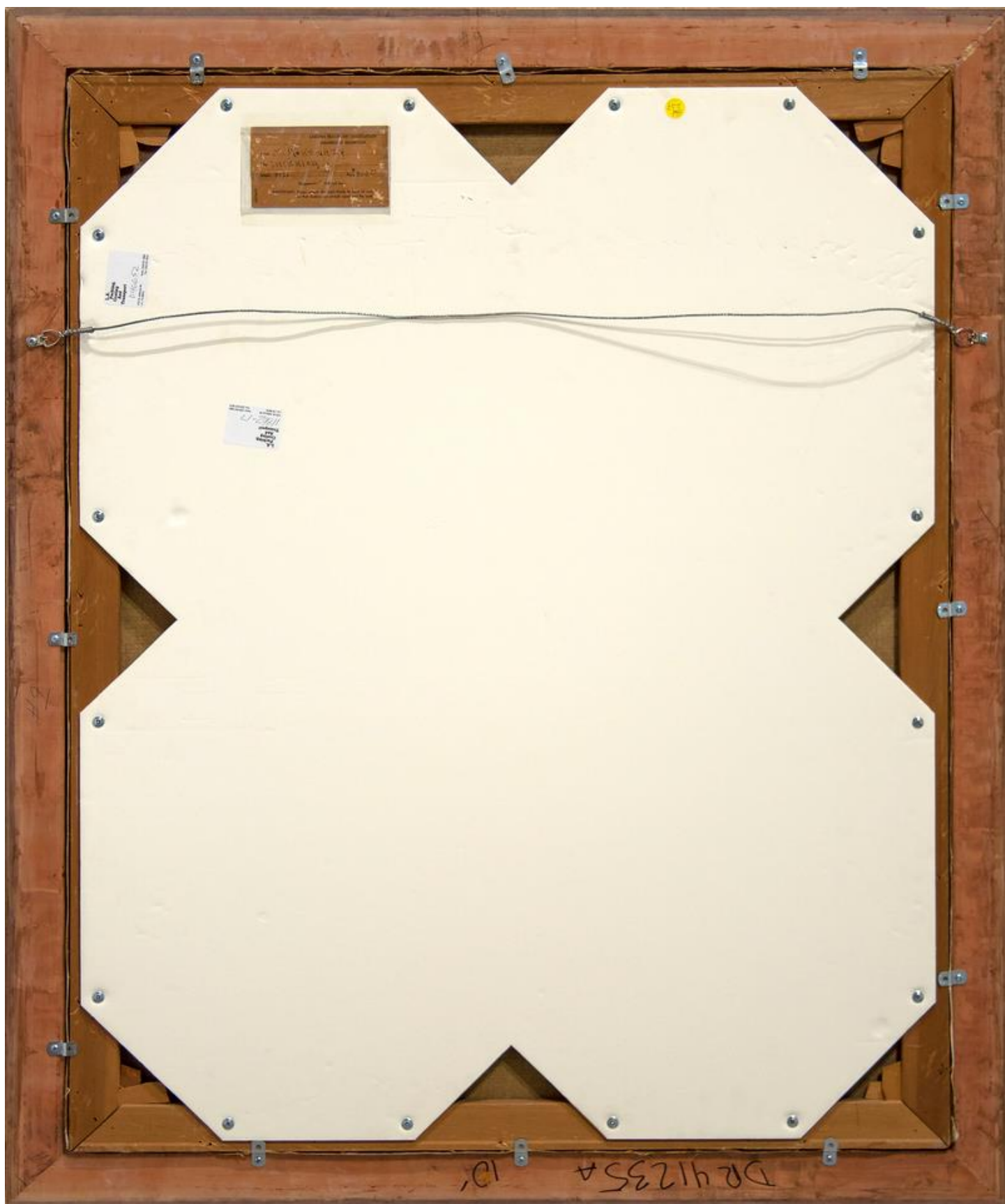














LAGUNA BEACH ART ASSOCIATION  
MEMBERSHIP EXHIBITION

Artist

M. HASKIN 24

Title

INTERIOR

Media

oil

Price

\$800.00

Bruggers ☒

Will call for

SEPARATE

IMPORTANT: Please attach this card firmly to back of work  
so that Gallery can detach reject and file card.